

CLAIM OF BENEFICIAL USE M A P

TAX LOTS 701 & 705

Located in NE-NW Qtr-Qtr and
in the NW-NE Qtr-Qtr
of Section 33, T.14S., R.10E., W.M.
Deschutes County, Oregon



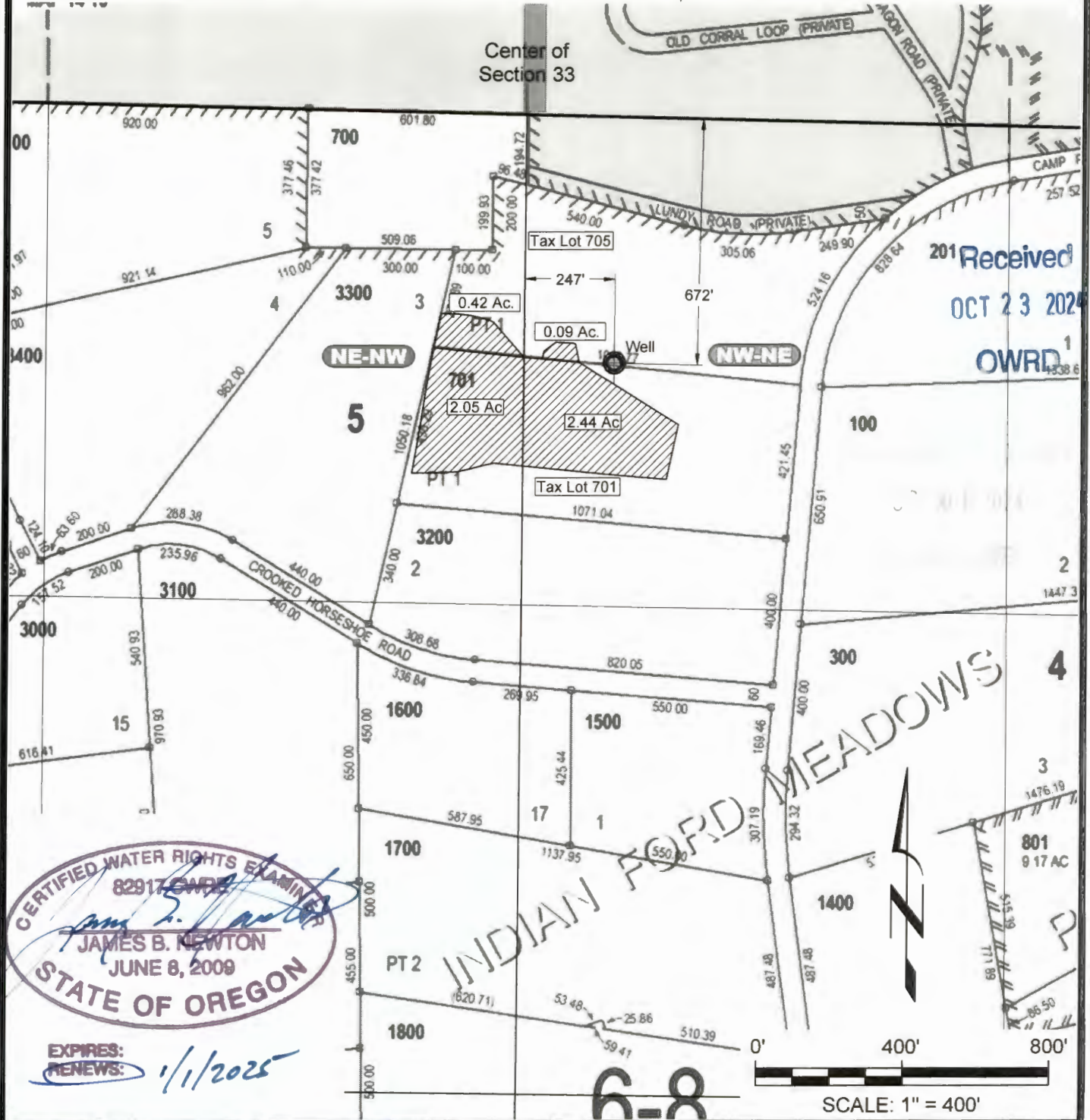
NOTES

1. This map was prepared for the purpose of identifying the location of water rights only and is not intended to provide legal dimensions or locations of property ownership lines.

LEGEND

- Place of Use
- Well
- Well Location

Source: Tax Lot base provided by Deschutes County Tax Clerk's Office.



Claim of Beneficial Map - Transfer T-9085
Joan Scannell Properties
Deschutes County, Oregon

DESIGNED BY: J. Newton	DRAWN BY: R2D	DATE: SEPT 2024	PROJECT NO. CG 1159-101	FIGURE 2
---------------------------	------------------	--------------------	----------------------------	-------------