

THIS MAP WAS PREPARED FOR ASSESSMENT PURPOSE ONLY.

SW1/4 SEC.15 T.26S. R.4W. W.M.
DOUGLAS COUNTY
1" = 200'

REVISED ON
11-4-19

26 4 15C

A: 26 4 15C
B: ↑ north
C: 1 = 200
D: TAX Lot 100
E: SW 1/4 NE 1/4
F: NW DLC Co No 42
G: See tax lot 100
H: .25
I: South 150 ft
J: From the NW
Cor. DLC No. 42
thence East 180
ft

SW
NW

NW
SW

12-00

SW
SW

SE
NW

NE
SW

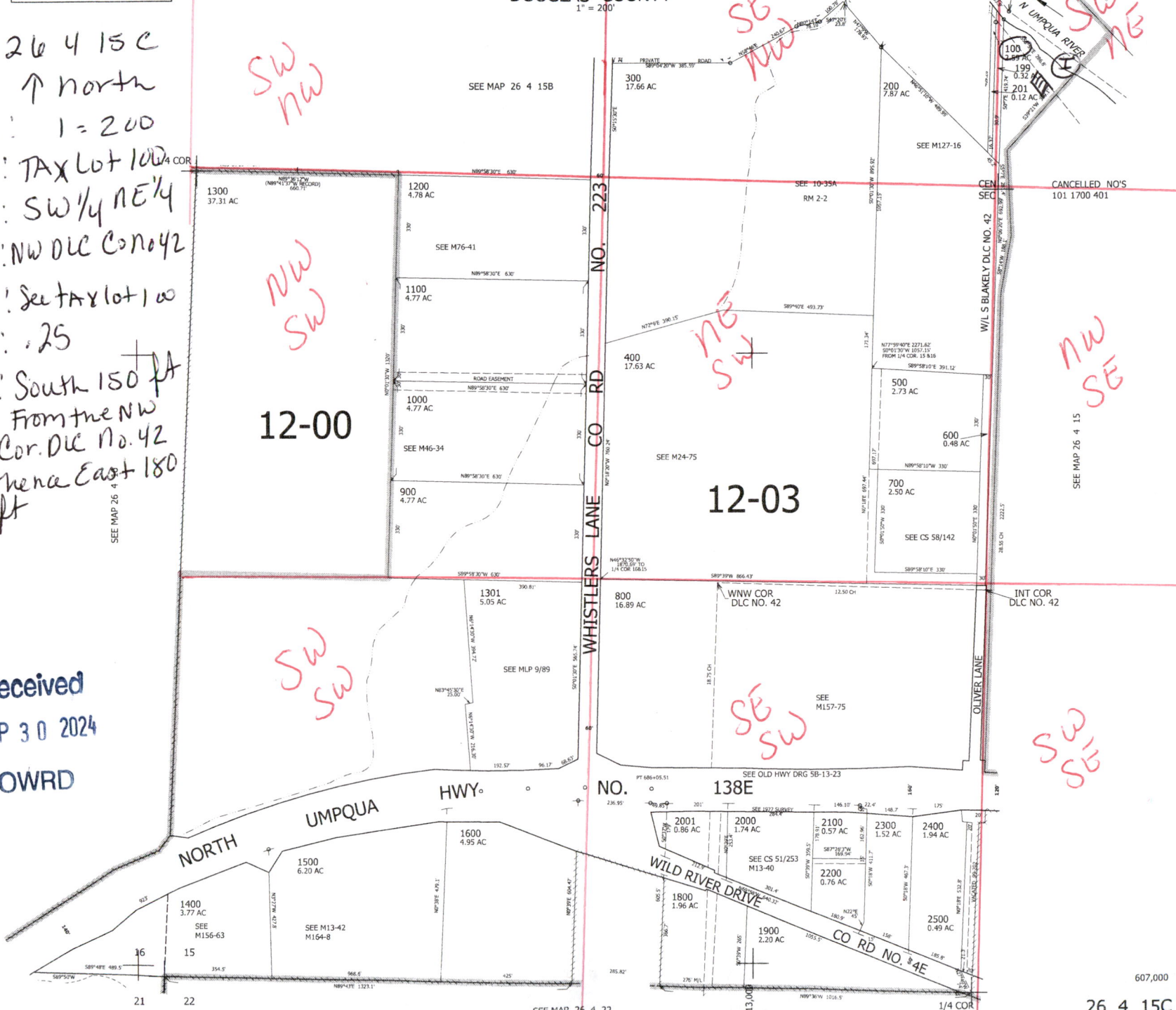
12-03

SE
SW

NW
SE

SW
SW

Received
SEP 30 2024
OWRD



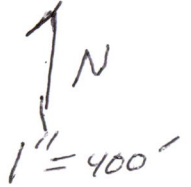
607,000

26 4 15C

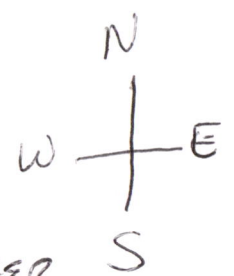
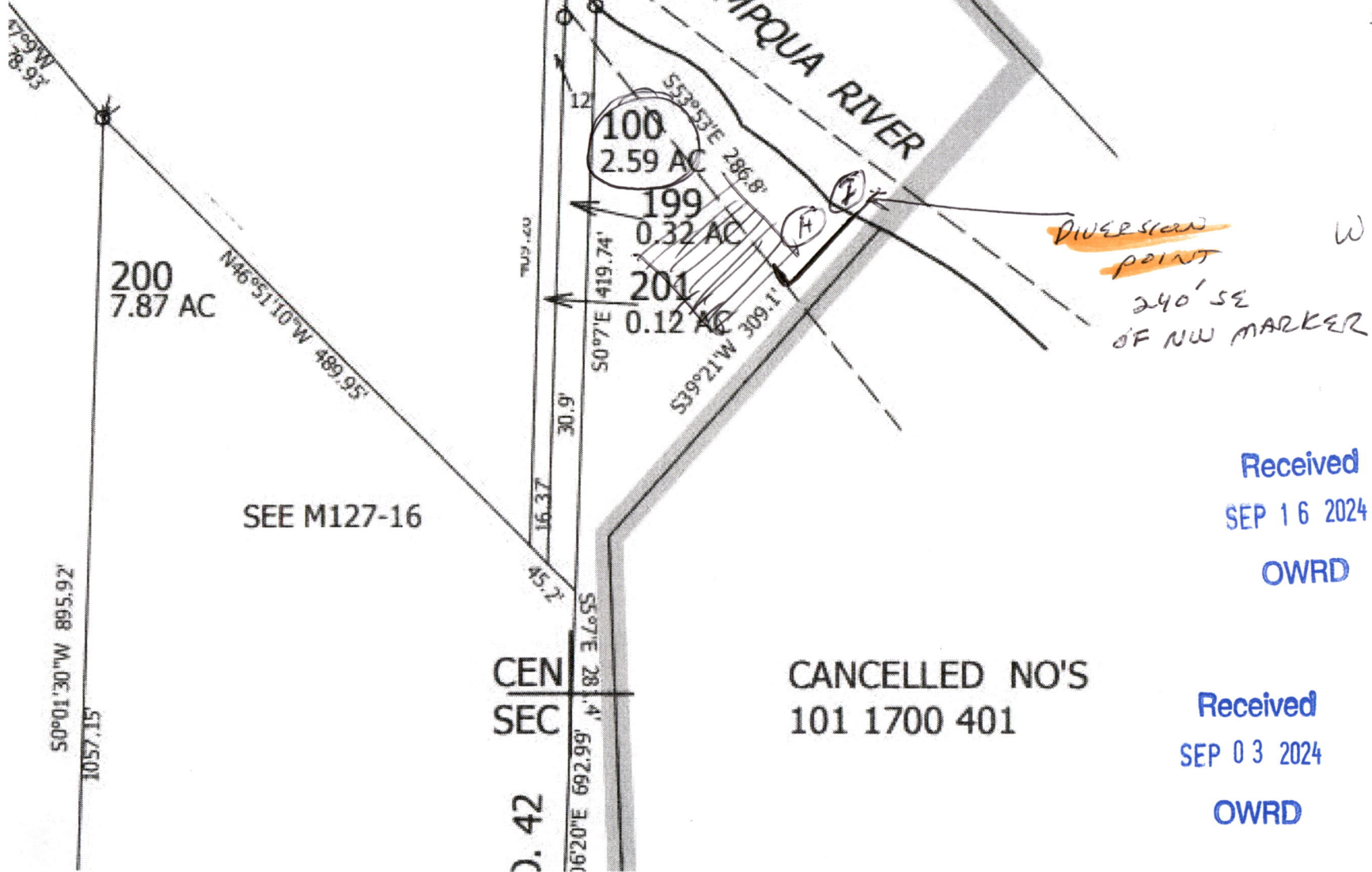
REVISED ON
11-4-19

26 4 15C

NW COR
DLC NO. 42



TAX LOT 100
SW



Received
SEP 16 2024

OWRD

Received
SEP 03 2024

OWRD

Received
SEP 30 2024

OWRD

THIS MAP WAS PREPARED FOR ASSESSMENT PURPOSE ONLY.

SEC.15 T.26S. R.4W. W.M.
DOUGLAS COUNTY
1" = 400'

REVISED ON
2-3-20

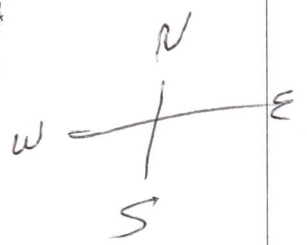
26 4 15
& INDEX

SEE MAP 26 4 10



TAX ~~600~~
LOT
100

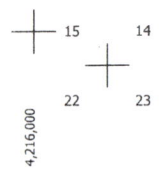
CANCELLED NO'S



SEE MAP 26 4 14

Received
SEP 30 2024
OWRD

Received
SEP 16 2024
OWRD



607,000

26 4 15
& INDEX

SEE MAP 26 4 22

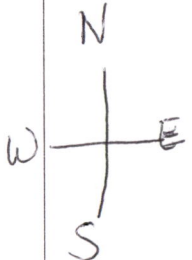
THIS MAP WAS PREPARED FOR ASSESSMENT PURPOSE ONLY.

SW1/4 SEC.15 T.26S. R.4W. W.M. DOUGLAS COUNTY 1" = 200'

REVISED ON 11-4-19

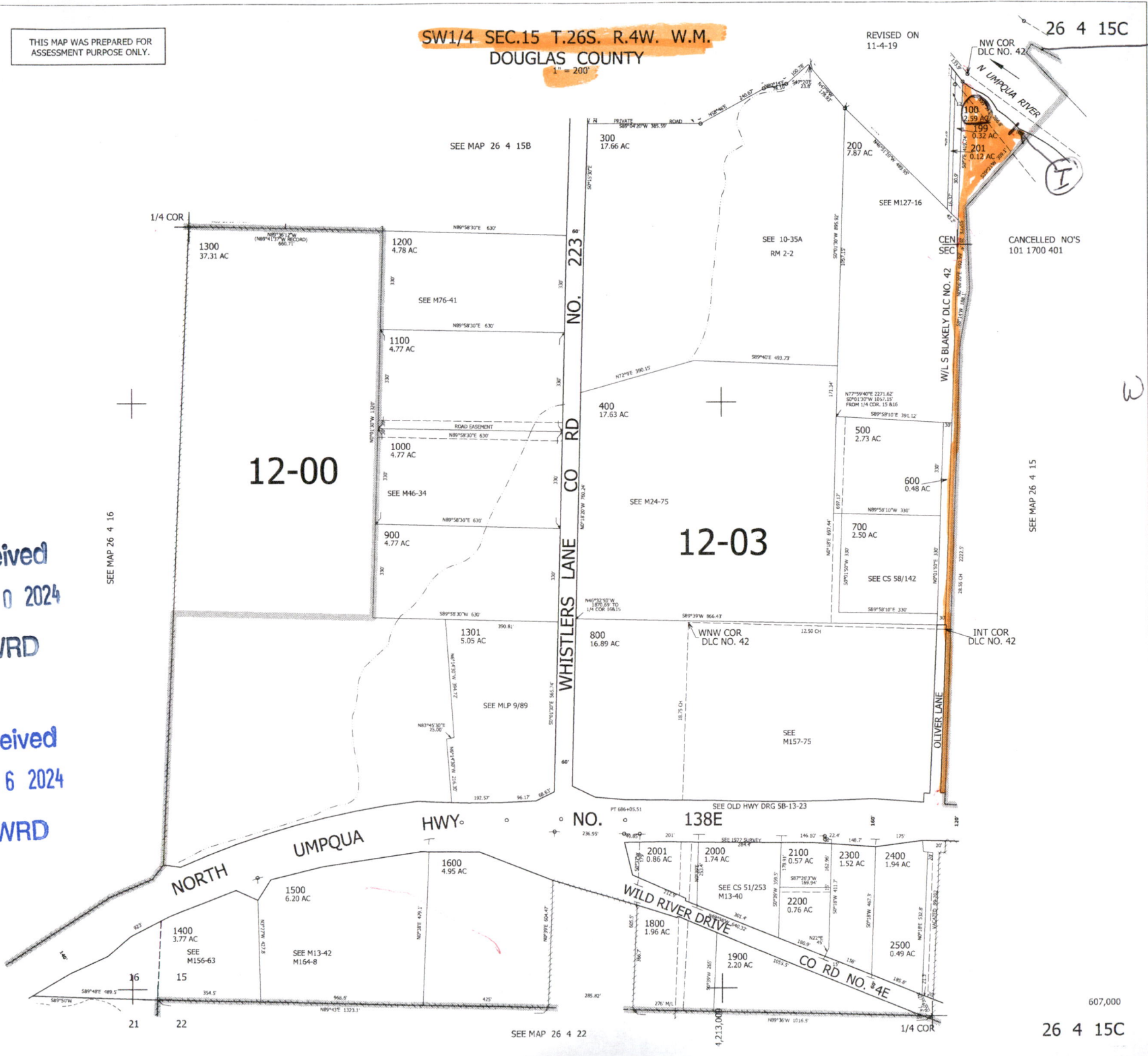
26 4 15C

TAX LOT 100



Received SEP 30 2024 OWRD

Received SEP 16 2024 OWRD



SEE MAP 26 4 16

SEE MAP 26 4 15B

SEE M127-16

CANCELLED NO'S 101 1700 401

SEE MAP 26 4 15

SEE MAP 26 4 22

607,000

26 4 15C

WAS PREPARED FOR
ENT PURPOSE ONLY.

DOUGLAS COUNTY
1" = 200'

11-4-19

NW COR
DLC NO. 42

SEE MAP 26 4 15B

1/4 COR

1300
37.31 AC

1200
4.78 AC

1100
4.77 AC

1000
4.77 AC

900
4.77 AC

12-00

300
17.66 AC

200
7.87 AC

400
17.63 AC

1301
5.05 AC

800
16.89 AC

1600
4.95 AC

1400
3.77 AC

1500
2.80 AC

NO. 223

WHISTLERS LANE

CO RD

NO. 138E

WILD RIVER DRIVE

CO RD NO. 4E

NO. 138E

2100
0.57 AC

2200
0.76 AC

1900
2.20 AC

2000
1.74 AC

2001
8.86 AC

2002
1.52 AC

2400
1.94 AC

2500
0.99 AC

500
2.73 AC

600
0.48 AC

700
2.69 AC

12-03

199
0.32 AC

201
0.12 AC

WALS BLANKELY DLC NO. 42

CANCELLED NO'S
101 1700 401

SEE MAP 26 4 15

INT COR
DLC NO. 42

OLIVER LANE

607,000

NW
NW
SW

NE
NW
SW

NW
NE
SW

NE
NE
SW

SW
NW
SW

SE
NW
SW

SW
NE
SW

SE
NE
SW

NW
SW
SW

NE
SW
SW

NW
SE
SW

NE
SE
SW

SW
SW
SW

SE
SW
SW

SE
SE
SW

SW
SE
SW

SW
SW
NE

SE
SW
NE

Received
SEP 30 2024
OWRD

16
15
21
22

SEE MAP 26 4 22

26 4 15C