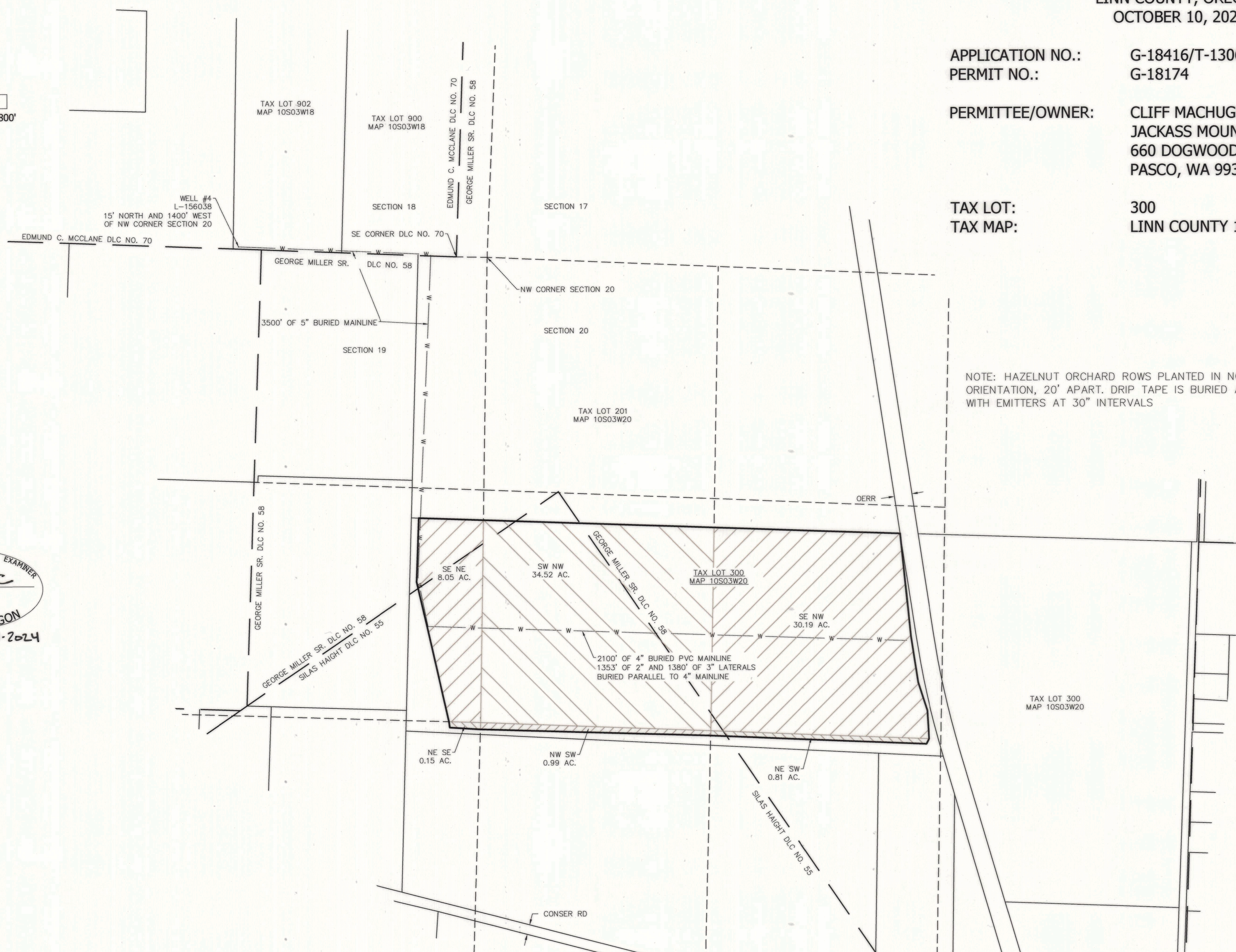
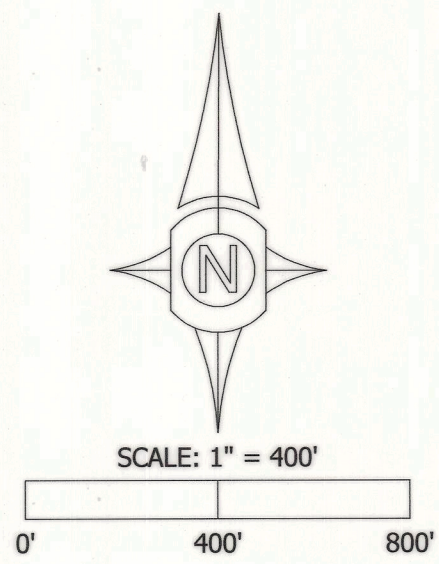


CLAIM OF BENEFICIAL USE MAP
 LOCATED IN THE NW & SW 1/4 SECTION 20
 AND IN THE NE & SE 1/4 SECTION 19
 T. 10 S., R. 3 W., W.M.
 LINN COUNTY, OREGON
 OCTOBER 10, 2022

APPLICATION NO.: G-18416/T-13065
 PERMIT NO.: G-18174
 PERMITTEE/OWNER: CLIFF MACHUGH
 JACKASS MOUNTAIN HOLDINGS, LLC
 660 DOGWOOD RD
 PASCO, WA 99301
 TAX LOT: 300
 TAX MAP: LINN COUNTY 10S.03W.20



NOTE: HAZELNUT ORCHARD ROWS PLANTED IN NORTH-SOUTH ORIENTATION, 20' APART. DRIP TAPE IS BURIED ALONG EACH ROW WITH EMITTERS AT 30" INTERVALS



AREA SUMMARY:

- SE 1/4, NE 1/4 S. 19:
 DLC 55: 5.775 ACRE
 DLC 58: 2.275 ACRES
 TOTAL: 8.05 ACRES
- NE 1/4, SE 1/4 S. 19:
 DLC 55: 0.15 ACRES
- SW 1/4, NW 1/4 S. 20:
 DLC 55: 25.04 ACRE
 DLC 58: 9.48 ACRES
 TOTAL: 34.52 ACRES
- SE 1/4, NW 1/4 S. 20:
 DLC 55: 0.08 ACRE
 DLC 58: 30.11 ACRES
 TOTAL: 30.19 ACRES
- NW 1/4, SW 1/4 S. 20:
 DLC 55: 0.99 ACRES
- NE 1/4, SW 1/4 S. 20:
 DLC 55: 0.05 ACRES
 DLC 58: 0.76 ACRES
 TOTAL: 0.81 ACRES

TOTAL IRRIGATED ACRES: 74.71 ACRES

THIS MAP IS NOT INTENDED TO PROVIDE LEGAL DIMENSIONS OR LOCATIONS OF PROPERTY OWNERSHIP LINES

RECEIVED
 NOV 14 2024
 OWRD

Udell
 ENGINEERING &
 LAND SURVEYING, LLC
 63 EAST ASH ST.
 LEBANON, OREGON
 97355
 PH. (541) 451-5125
 FAX (541) 451-1366
 22-268 JACKASS MTN HOLDINGS
 SHEET 1 OF 1