

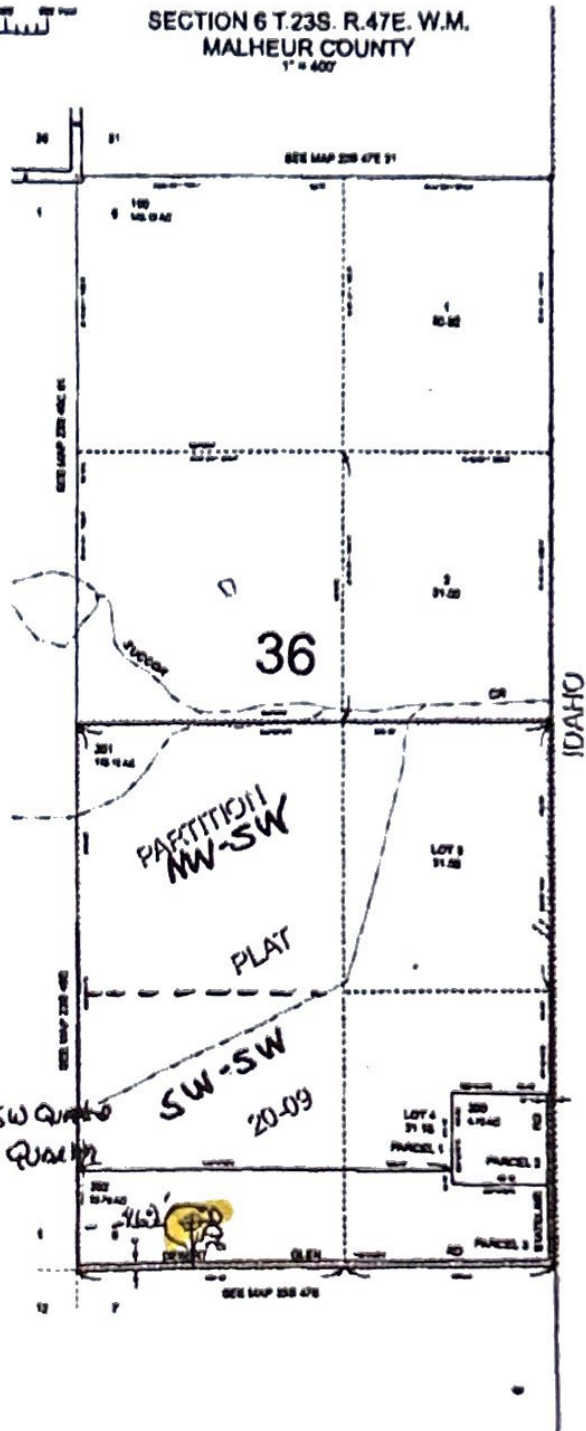
THIS MAP WAS PREPARED FOR
ASSESSMENT PURPOSE ONLY



SECTION 6 T.23S. R.47E. W.M.
MALHEUR COUNTY
1" = 400'

23S47E06

E-RECEIVED
DEC 15, 2024
OWRD



Marker A # 6
center of Dam
No. 206 SW corner SW quarter
E. 462 SW corner
Section 6

Received
JUN 24 2024
OWRD

Received
JUN 24 2024
OWRD

Revised MA
05-28-2020

23S47E06