

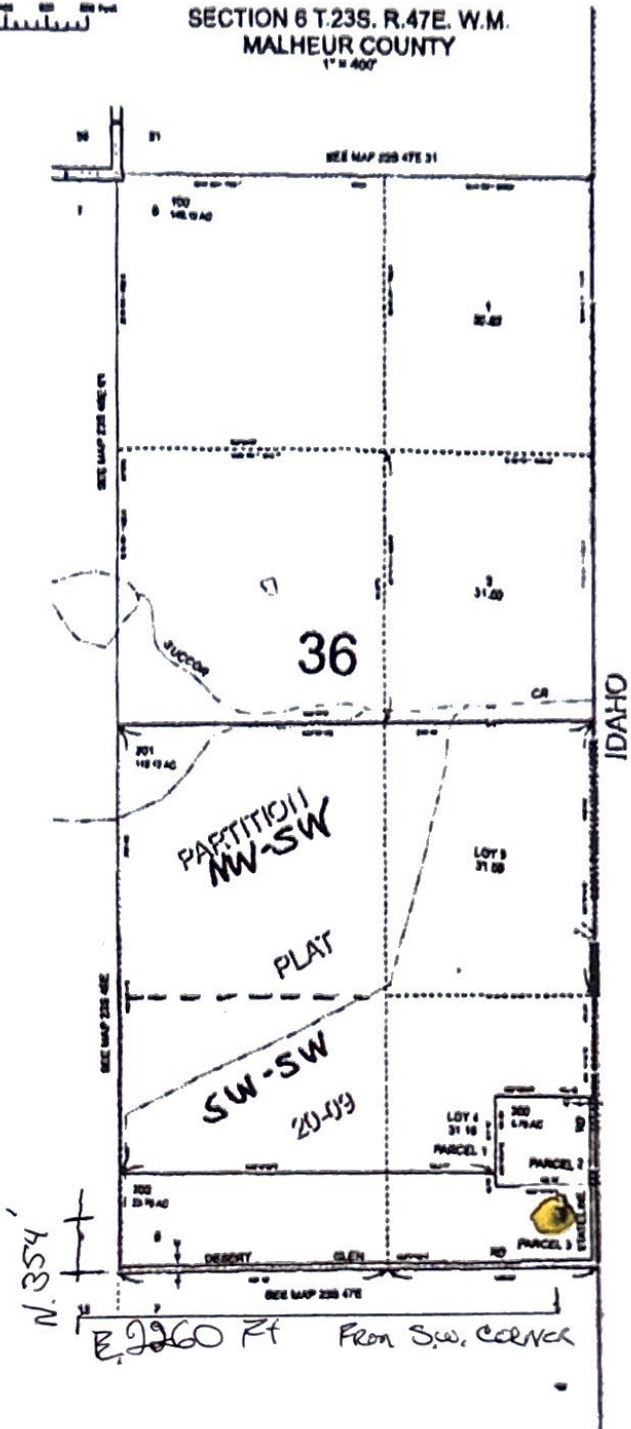
THIS MAP WAS PREPARED FOR ASSESSMENT PURPOSE ONLY.



SECTION 6 T.23S. R.47E. W.M.
MALHEUR COUNTY
1" = 400'

23S47E06

E-RECEIVED
DEC 15, 2024
OWRD



Received
JUN 24 2024
OWRD

Smilin A #2
corner of Dan
N. 354 Ft SW corner/corner
E. 2260 Ft. SW corner/corner

Revised: M.A.
05/25/2019

23S47E06