



SECTION 12, T 5 S, R 5 W, W.M.
POD IS 1826.28' NORTH AND 1836.83' EAST OF SW CORNER OF SECTION 12

 RESERVOIR LOCATION

REVISIONS			
REV. NO.	DESCRIPTION	DATE	APPROVED
1			
2			
3			
4			



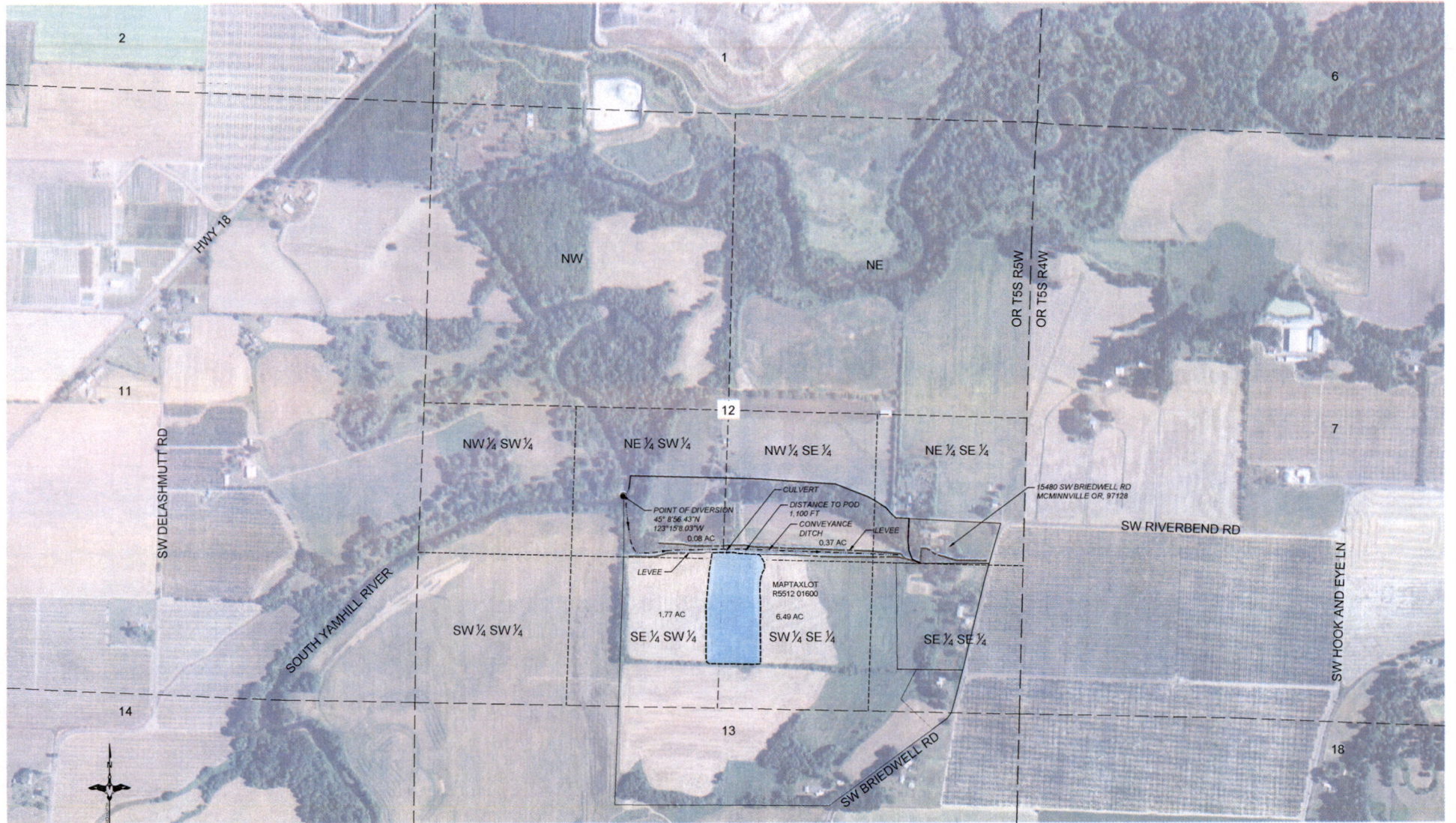
PROJECT NO. US-OR-206-6	DATE 8/10/2024	DESIGNED BY: CC
SOUTH YAMHILL WATER RIGHTS		DRAWN BY: BOR
		SURVEYED BY: -
		CHECKED BY: -
		SHEET NO. 1 of 1

Unauthorized Changes & Uses
The engineer preparing these plans will not be responsible for, or liable for, unauthorized changes to or uses of these plans. All changes must be in writing and must be approved by the preparer of these plans.

Received by OWRD

JAN 14 2025

Salem, OR



SECTION 12, T 5 S, R 5 W, W.M.

0 400 800
HORIZONTAL SCALE

Unauthorized Changes & Uses
The engineer preparing these plans will not be responsible for, or liable for, unauthorized changes to or uses of these plans. All changes must be in writing and must be approved by the preparer of these plans.

Received by OWRD

SEP 30 2024

Salem, OR

IRRIGATED AREA

Received by OWRD

JAN 14 2025

Salem OR

REVISIONS			
REV. NO.	DESCRIPTION	DATE	APPROVED



PROJECT NO. US-OR-206-6	DATE 8/10/2024	DESIGNED BY CC
SOUTH YAMHILL WATER RIGHTS		DRAWN BY BGR
		SURVEYED BY -
		CHECKED BY -
		SHEET NO. 1 of 1