

Thomas D. Jones
POD Transfer Map
Transfer T-13649

T39S, R24E, WM
Section 20 & 21

POD #1
2190 ft South
3300 ft West


From the NE Corner
of Sec 20, T39S, R24E


Received
MAR 03 2025
OWRD

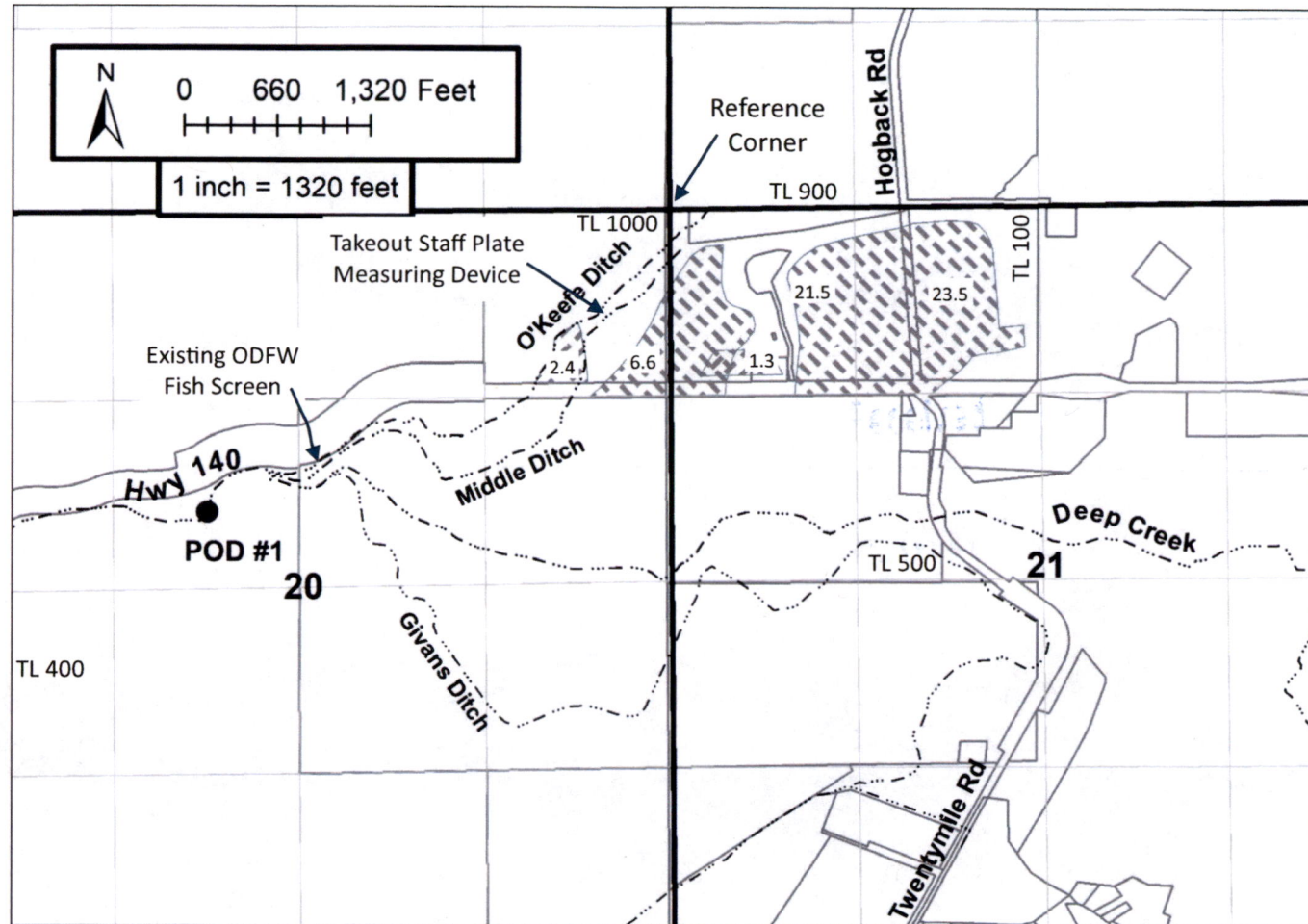
Received
MAR 03 2025
OWRD

Legend

● POD #1

 Cert 9428, POD change to Use POD #1

 Cert 66882, POD change to Use POD #1



Note: This map is not intended to provide legal dimensions or locations of property ownership lines.

The area mapped as the Place of Use is from the OWRD WRIS GIS mapping. It is used here for reference. CWRE does not certify its accuracy.

