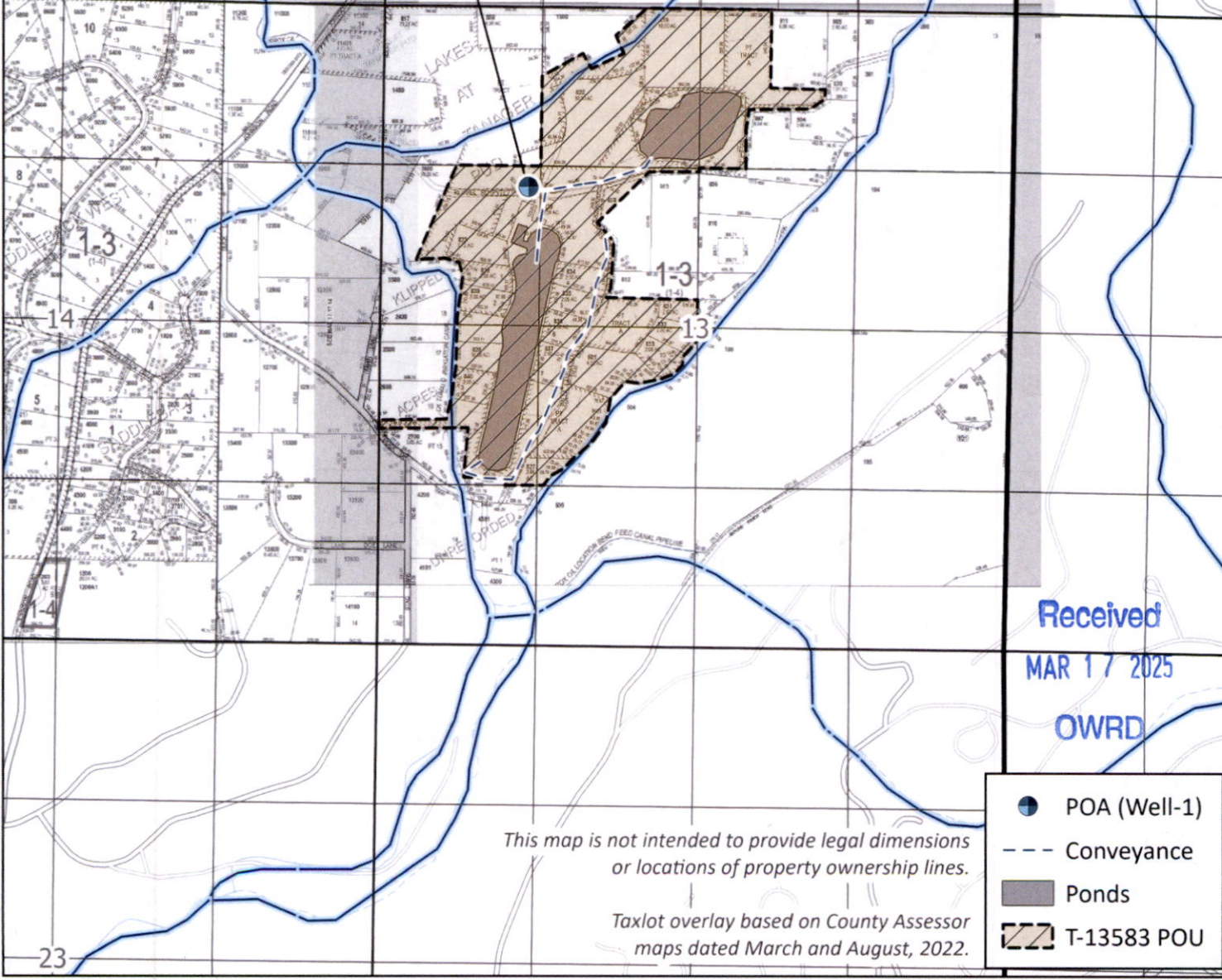


**Transfer T-13583
(T17S, R11E, Section 13)**

Certified Water Rights Examiner
#71101
RLJ
Robert E. Long Jr.
May 15, 2002
STATE OF OREGON

EXPIRATION DATE: *3-28-2026*

Well-1 (DESC-59909/64727)
Meter at wellhead
1,490 ft S and 1,350 ft W
of N1/4 Corner, Section 13



Received
MAR 17 2025
OWRD

*This map is not intended to provide legal dimensions
or locations of property ownership lines.*

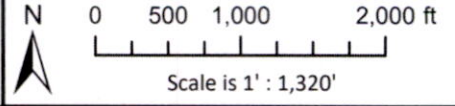
*Taxlot overlay based on County Assessor
maps dated March and August, 2022.*

- POA (Well-1)
- Conveyance
- Ponds
- T-13583 POU

CWM-H2O
Complete Water Management

311 B Avenue, Suite P
Lake Oswego, Oregon 97034
(503) 954-1326

Figure 1
Claim of Beneficial Use Map for
Transfer with Multiple Changes ("To" Lands)



1	DATE	AUTH	DRAFT
No.	Date	By	Revisions

Proj#: 1707005
KC Development Group COBU
KC Development Group, LLC
63560 Johnson Road
Bend, OR 97703