

APR 17 2025
Salem, OR**POA LOCATION MAP**

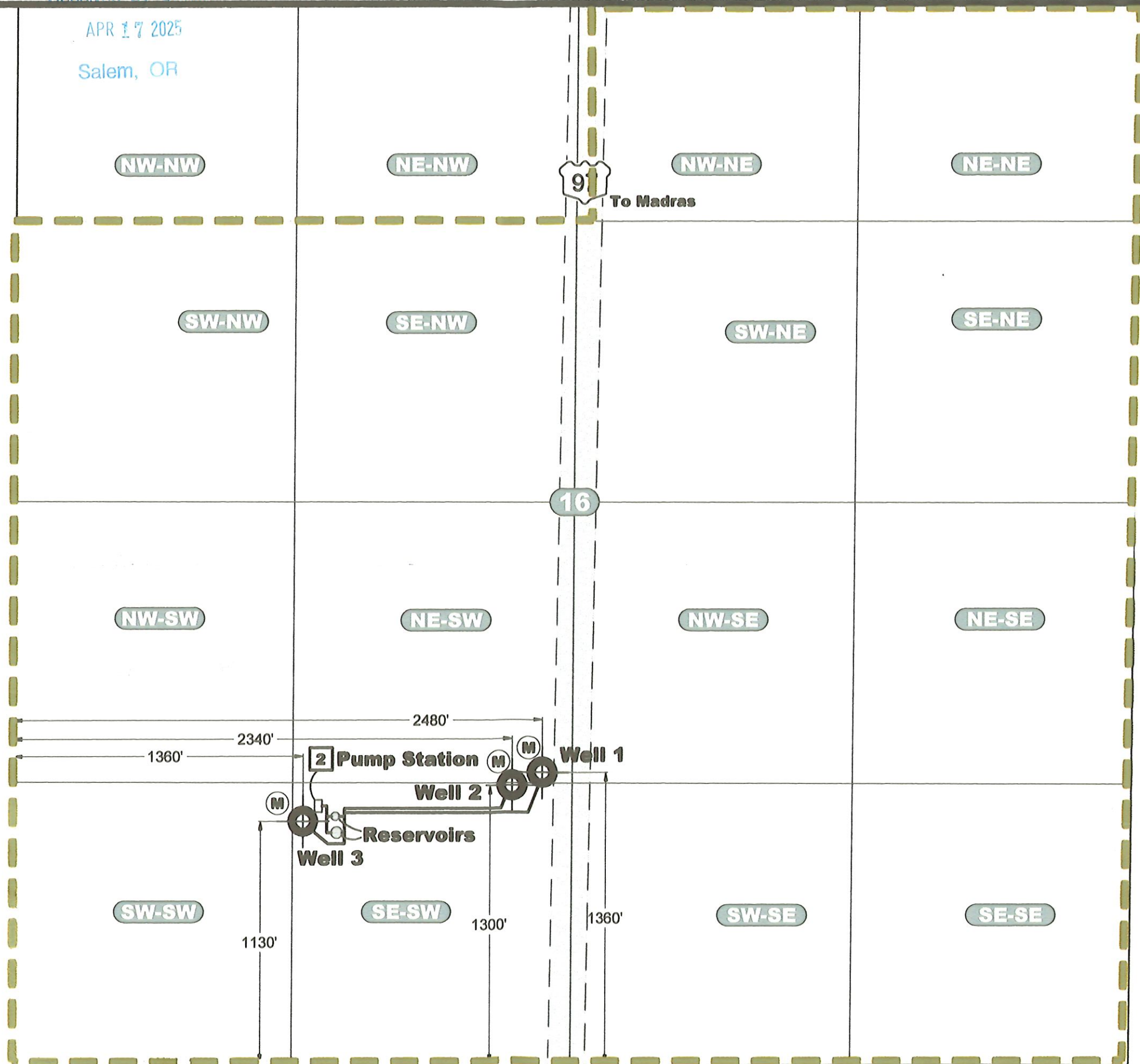
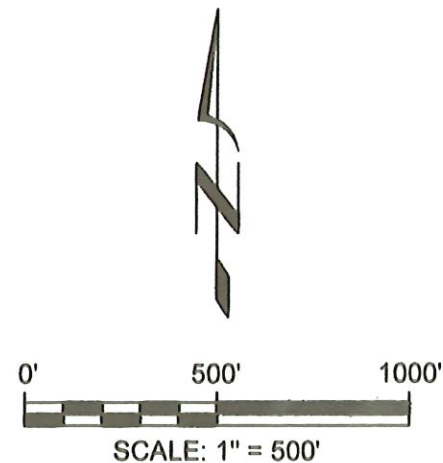
Located in South Half of NW Qtr and
South Half of NE Qtr and also
Located in SW Qtr and SE Qtr
of Section 16, T.14.S, R.13.E, W.M.
Deschutes County, Oregon

NOTES

1. This map was prepared for the purpose of identifying the location of water rights only and is not intended to provide legal dimensions or locations of property ownership lines.
2. Approximate location of Pump Station, pump station water feeds TDWD's distribution system.

LEGEND

- Well 1**
Well locations as dimensioned
- (M)** Well Meter associated with each well.
- (O)** Approximate location of Reservoirs
- Water District Boundary

**POA Location Map**

Claim of Beneficial Use Map - Application G-9190 - Permit G-8542
Terrebonne, Deschutes County, Oregon

DESIGNED BY:
J. NewtonDRAWN BY:
R2DDATE:
APRIL 2025PROJECT NO.
CG 1031-101FIGURE
1

TDWD Distribution System Map
Located in South Half of NW Qtr and
South Half of NE Qtr and also
Located in SW Qtr and SE Qtr
of Section 16, T.14.S, R.13.E, W.M.
Deschutes County, Oregon

NOTES

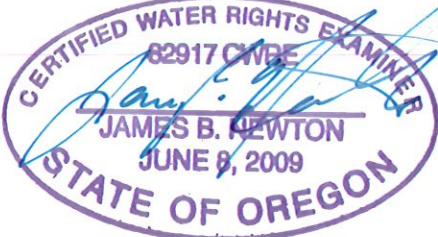
1. This map was prepared for the purpose of identifying the location of water rights only and is not intended to provide legal dimensions or locations of property ownership lines.
2. Approximate location of Pump Station, pump station water feeds TDWD's distribution system.

LEGEND

- Well 1**
Well locations as dimensioned on Figure 1.
- (M)** Well Meter associated with each well.
- Approximate location of Reservoirs
- Water District Boundary

WATERLINE LEGEND

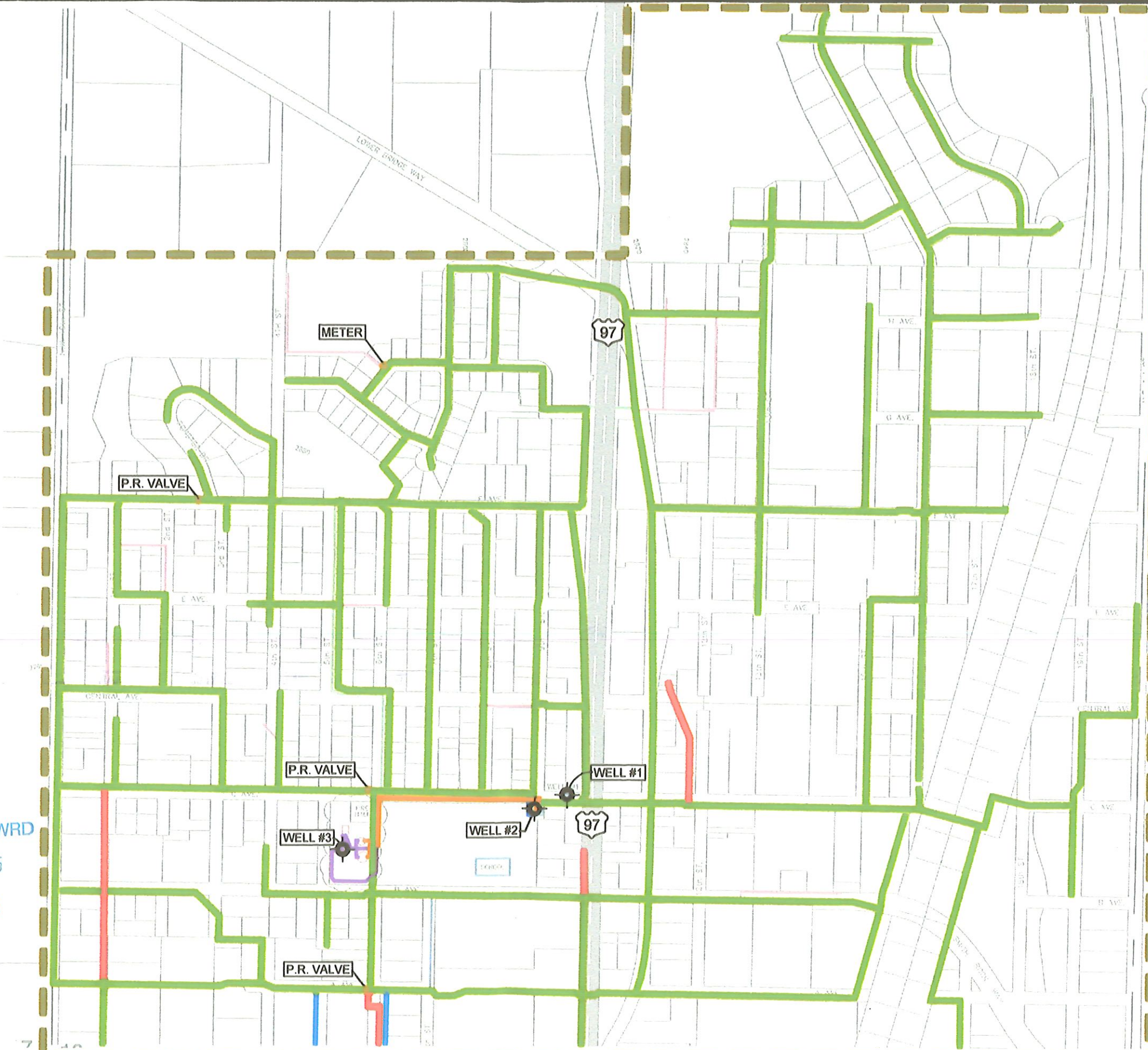
- 12" WATERLINE
10" WATERLINE
8" WATERLINE
6" WATERLINE
≤ 4" WATERLINE



EXPIRES:
RENEWS: 1/1/2027

Received by OWRD
APR 17 2025
Salem, OR

0' 500' 1000'
SCALE: 1" = 500'



TDWD Distribution System

Claim of Beneficial Use Map - Application G-9190 - Permit G-8542
Terrebonne, Deschutes County, Oregon

DESIGNED BY:
J. Newton

DRAWN BY:
R2D

DATE:
APRIL 2025

PROJECT NO.
CG 1031-101

FIGURE
2