

MAP FOR

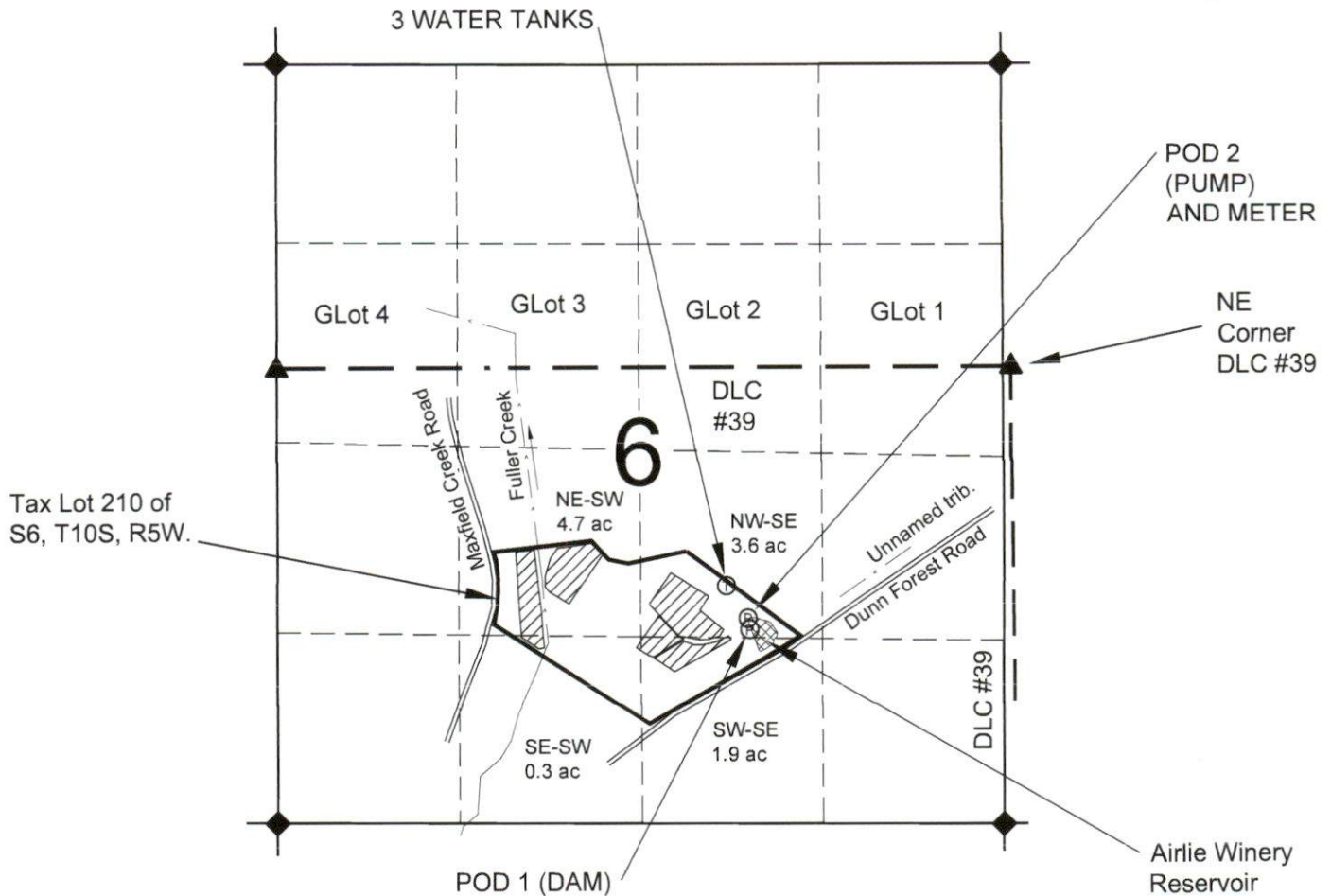
# Claim of Beneficial Use

South 1/2, S6, T10S, R5W, Polk County

Applications R-88432 & S-88433, Permits R-15289 & S-55234



1 IN = 1320 FT  
0 660 1320



POD 1 (Dam) is 1420' N & 1840' W of SE S6.  
POD 2 (Pump) is 1490' N & 1860' W of SE S6.

## NOTES:

- THIS MAP IS NOT INTENDED TO PROVIDE LEGAL DIMENSIONS OR LOCATIONS OF PROPERTY OWNERSHIP LINES.
- THE SECTION, DLC, AND AND PROPERTY LINES ARE FROM A SCALED TAX ASSESSOR MAP FOR SECTION 6 OF T10S, R5W.
- GOVERNMENT LOTS (GLot) ARE FROM GENERAL LAND OFFICE RECORDS.
- NO CREEK FLOWS IN OR OUT THE SUBJECT RESERVOIR, IT IS A SMALL DRAINAGE SWALE.

## LEGEND

- ◆ DONATION LAND CLAIM (DLC) CORNER
- SECTION CORNER
- ⊙ POINT OF DIVERSION (POD)
- ~~~~~ CONVEYANCE LINES (NOT SHOWN)
- - - QUARTER-QUARTER LINE
- DLC LINE
- TAX LOT LINE
- SECTION LINE
- - - - - STREAM OR SURFACE DRAINAGE.
- ▨ IRRIGATED AREA
- ▩ AIRLIE WINERY RESERVOIR



Received  
APR 10 2025  
OWRD

## ASPEN RURAL LAND CONSULTING

ERIC URSTADT, PE, PLS  
971-250-1520  
MAR 2025  
AirlieWinery3F