

FINAL PROOF SURVEY AND CLAIM OF BENEFICIAL USE

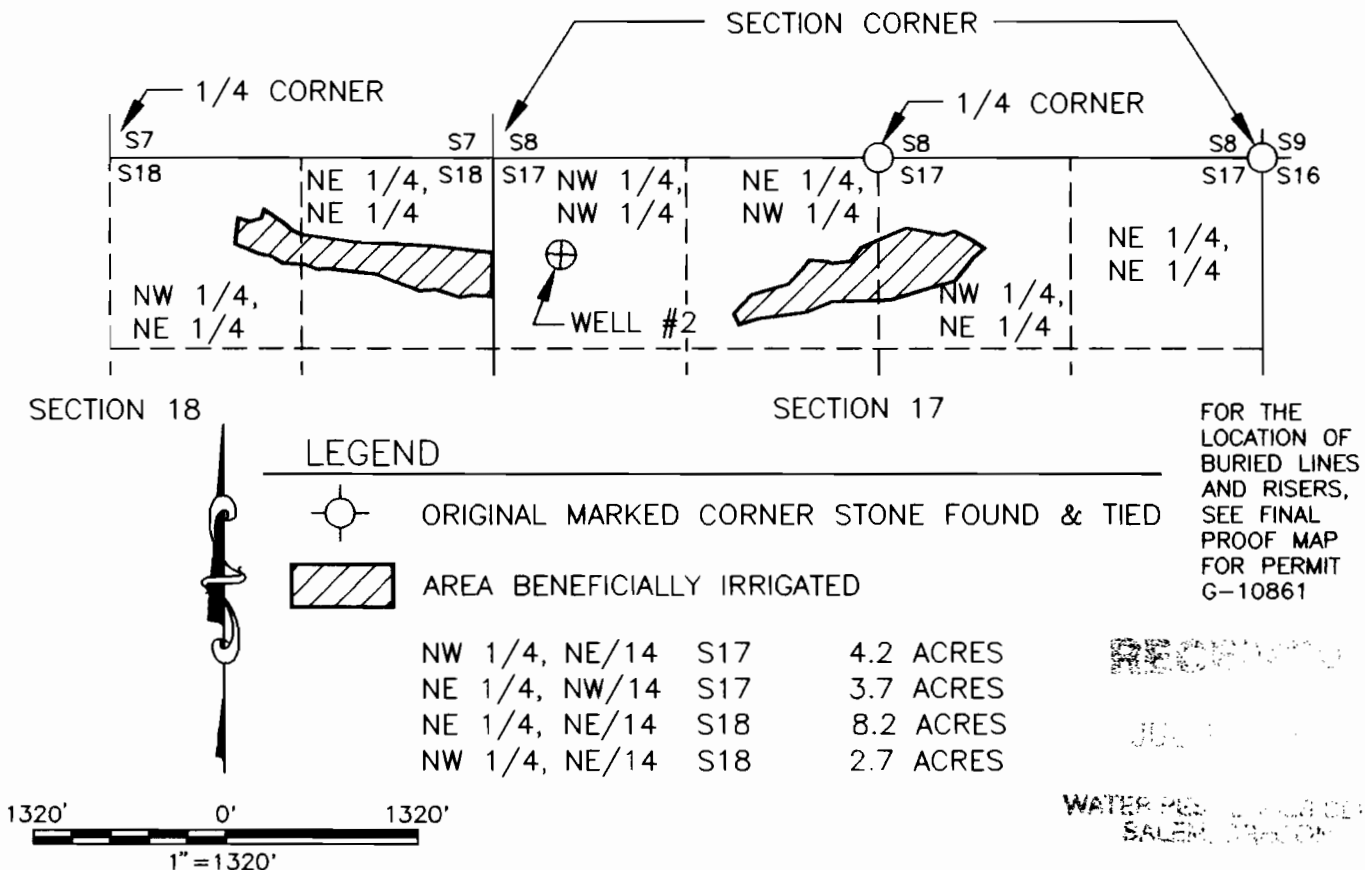
LOCATED WITHIN
NW1/4, NE 1/4 AND NE 1/4, NW 1/4, SECTION 17
AND
NE 1/4, NE 1/4 AND NW 1/4, NE 1/4, SECTION 18
T.2S., R.33E., W.M
UMATILLA COUNTY, OREGON

APPLICATION G-12832

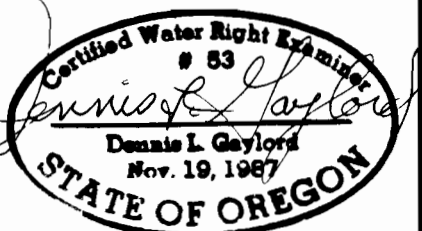
PERMIT G-12242

APPLICANT: PIONEER RESOURCES LLC

WELL #2 IS 700 FEET SOUTH AND 2,165 FEET WEST OF THE
NORTH 1/4 CORNER OF SECTION 17, T.2S., R.33E., W.M., AND IS
WITHIN THE NW 1/4, NW 1/4, SECTION 17.



THIS MAP IS PREPARED FOR THE EXPRESS PURPOSE TO SHOW WATER APPROPRIATION AND USE. IT IS NOT INTENDED TO SHOW OR LOCATE PROPERTY OWNERSHIP LINES.



RENEWS 6/30/2001

DENNIS L. GAYLORD,
CWRE
71614 S.W. LAKE DRIVE
PENDLETON, OR 97801
(541)-276-6260 ©
JUNE, 2000

Drawn by: Mill Creek Drafting