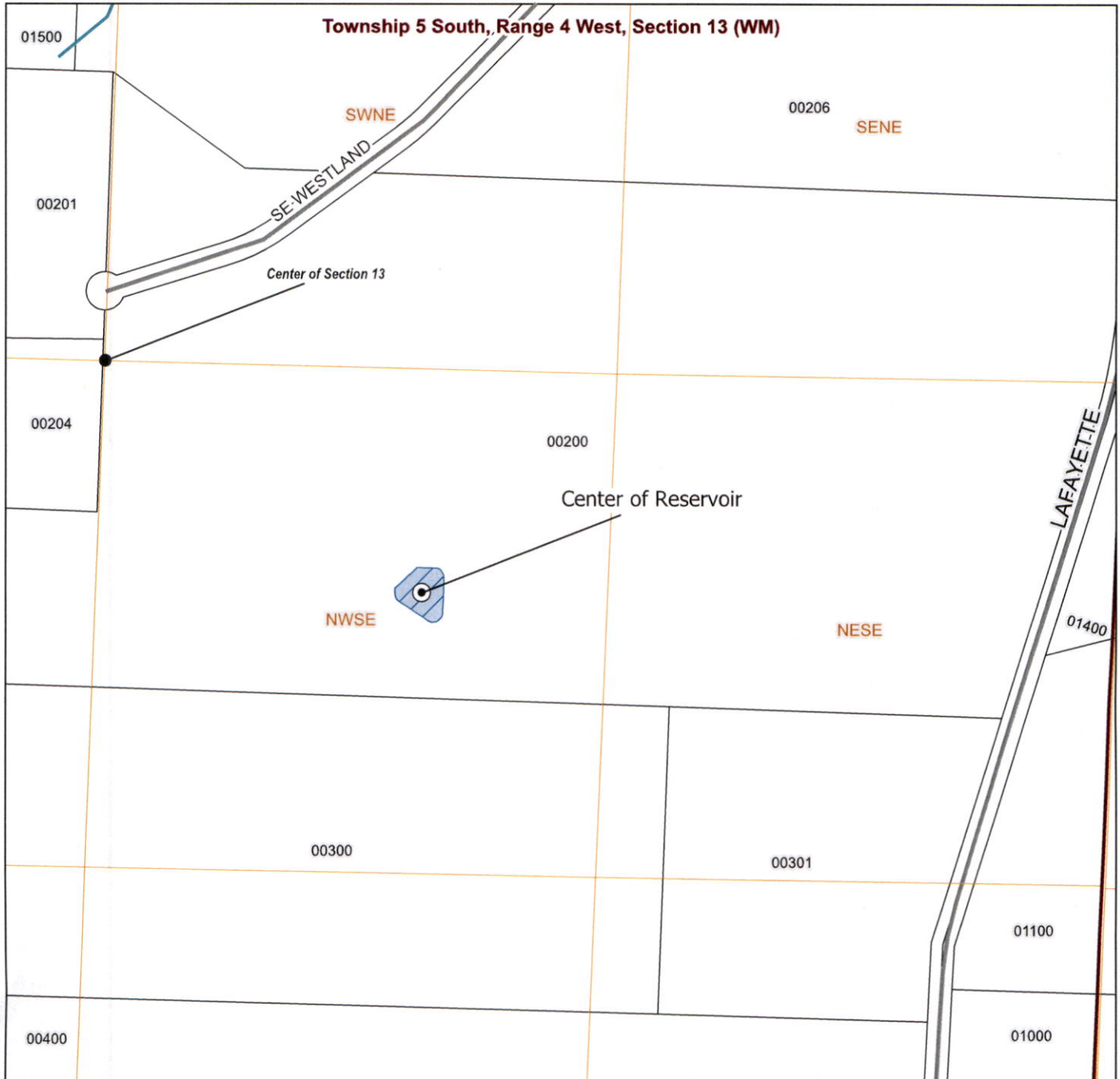


Claim of Beneficial Use

Permit R-15658, Application R-89449

A Water Right held by Roserock North LLC
Yamhill County



LEGEND

- PLSS Quarter Quarters
- Reservoir Location
- Area Submerged by Reservoir
- Rivers / Streams
- Roads
- Taxlots

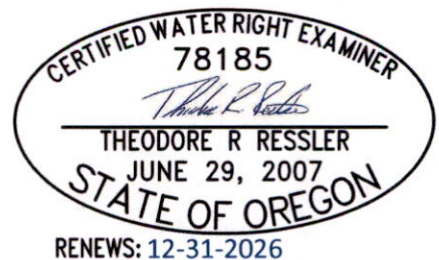
POD Location Description

Center of Reservoir. Located 817 feet South and 576 feet East from C1/4 Corner of Section 13 (NWSE), Township 5 South, Range 4 West, W.M.

Received

MAY 19 2025

OWRD



Scale
0 200 400 ft
1-inch = 400 feet

Date: 4/24/2025
Data Sources: BLM, OWRD, USGS, Yamhill County.
Disclaimer: This map is not intended to provide legal dimensions or property ownership lines.

