

#13 ACCEPTABLE MAP BOOK 3

SECTION 35 T.35S. R.7W. W.M. JOSEPHINE COUNTY

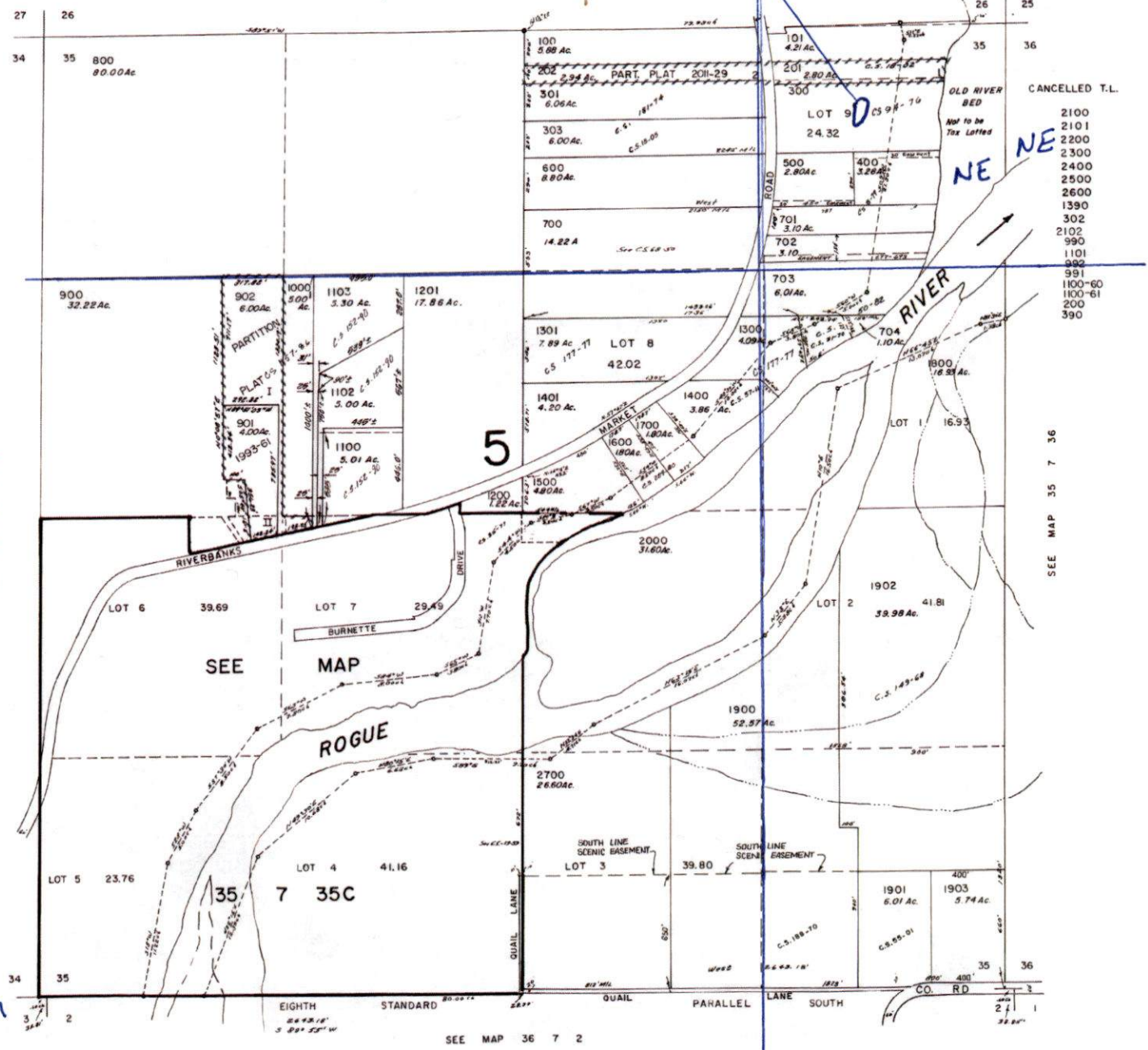
NORTH 35 7 35
35S 07W 35 300
RESERVOIR NW NW

This map was prepared for assessment purpose only.

Scale 1" = 1320'

SEE MAP 35 7 26

CS 35-77 SE 1/4 SW 1/4



Center of Pond
975' west &
274' south.
From NE corner
of Section 35

map