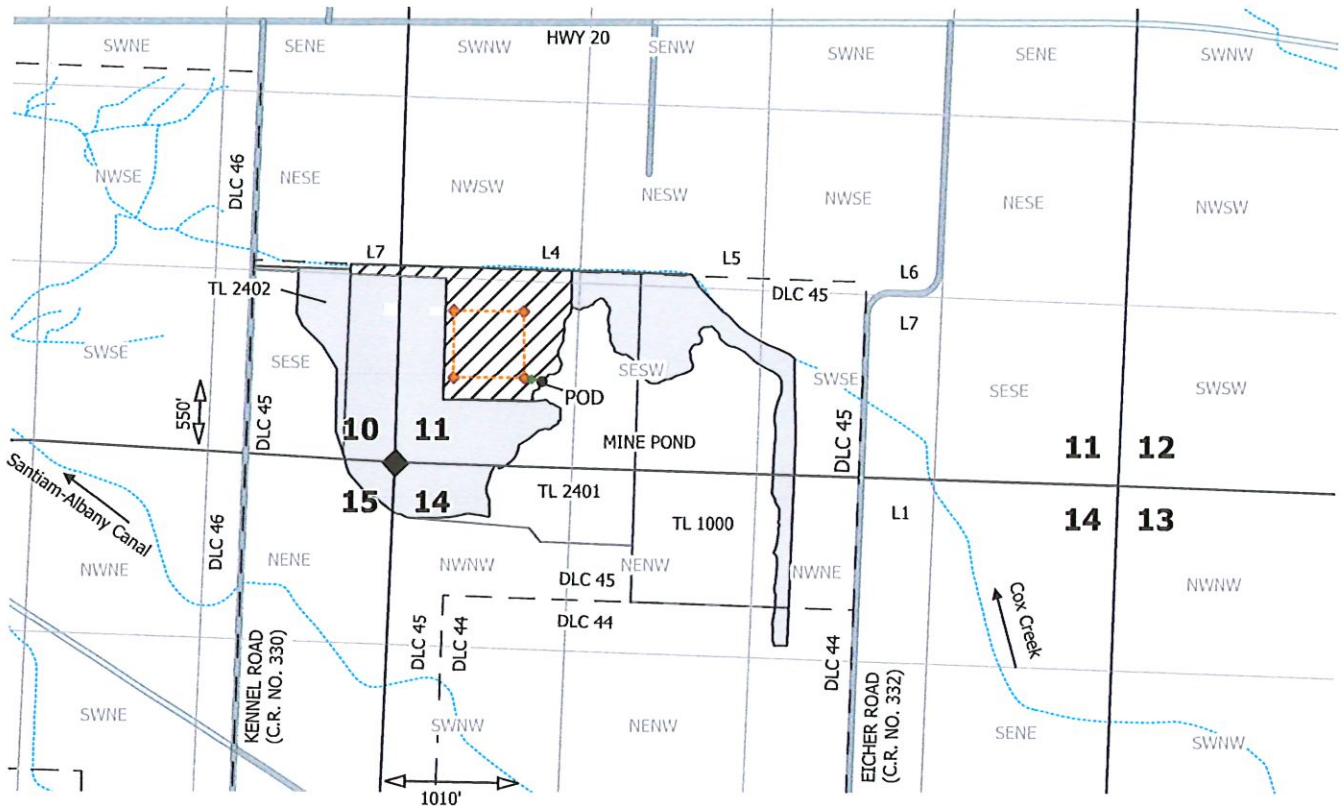
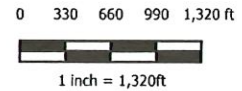


# Sections 10, 11, 14, & 15, T11S, R3W, M.W., Linn County, Oregon



POD located approximately 550' N and 1010' E of SW corner of Sec. 11 (Reference corner)



## Explanation

- |                                    |                          |
|------------------------------------|--------------------------|
| Proposed Fire Protection           | Pipeline (Approx.)       |
| Proposed Industrial/Commercial Use | Hydrants                 |
| Mine Pond                          | Point of Diversion (POD) |
| DLC                                | Pumphouse                |
| Tax Lot                            | Reference Corner         |

NAD 1983 HARN  
Datum of 1983  
Prepared June 25, 2025

Sources: BLM CadNDSI PLSS, roads, county lines & tax lots (Linn County), Oregon Spatial Data Library water features, DLC lines, et al. Locations of hydrants and proposed points of use provided by client.

This map was prepared for the purpose of identifying the location of a water right only and is not intended to provide legal dimensions or locations of property ownership lines.

**EnviroLogic Resources, Inc.**  
ENVIRONMENTAL • WATER RESOURCES SCIENTISTS

Received by OWRD

JUL 07 2025

Salem, OR



**Limited License  
Application Map**

**Knife River  
Albany, Oregon**