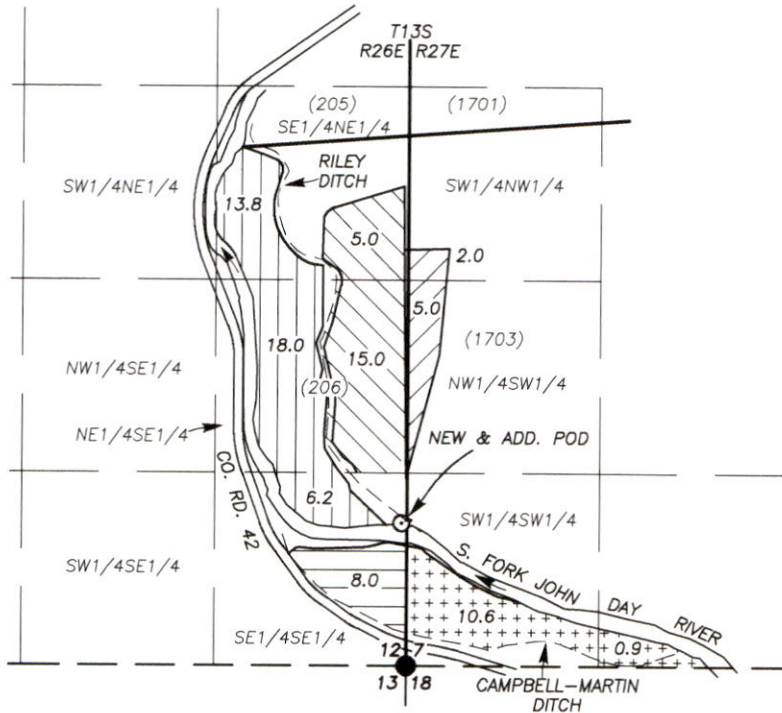







T.13S., R.26E., W.M., GRANT COUNTY, OREGON
CLAIM OF BENEFICIAL USE MAP UNDER TRANSFER NO. T-10940
FOR AUXIER RESOURCES NO. 1, LLC



SCALE: 1" = 1320'

- **POD WITH FISH SCREEN:** 940 FT. NORTH & 50 FT. WEST FROM SE CORNER SEC. 12, T.13S., R.26E.
 PUMP BEARS N.29°E., 35 FT. FROM POD
 FLOW METER BEARS N.17°E., 40 FT. FROM POD

PLACE OF USE & PRIORITY DATE:

-  **FEBRUARY 17, 1930 - 20.0 AC.**
-  **FEBRUARY 1, 1930 - 7.0 AC.**
-  **1878 - 38.0 AC.**
-  **SEPTEMBER 29, 1902 - 8.0 AC.**
-  **SEPTEMBER 29, 1902 - 11.5 AC.**

() **TAX LOT NO.**

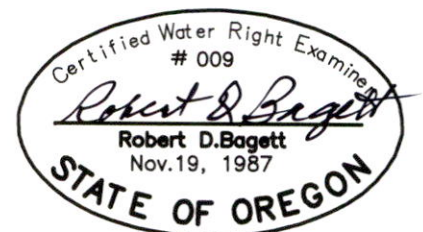
- **FOUND BRASS CAP MONUMENT AT THE SE CORNER SECTION 12, T.13S., R.26E., W.M.**

Received

JUL 17 2025

OWRD

PREPARED BY:
ROBERT D. BAGETT, PLS, CWRE
217 N. CANYON BLVD.
JOHN DAY, OREGON
(541) 620-0717
(541) 575-1251
FEBRUARY 5, 2025



DISCLAIMER: THIS MAP IS NOT INTENDED TO PROVIDE LEGAL DIMENSIONS OR LOCATIONS OF PROPERTY OWNERSHIP LINES.

RENEWS 12/31/2025