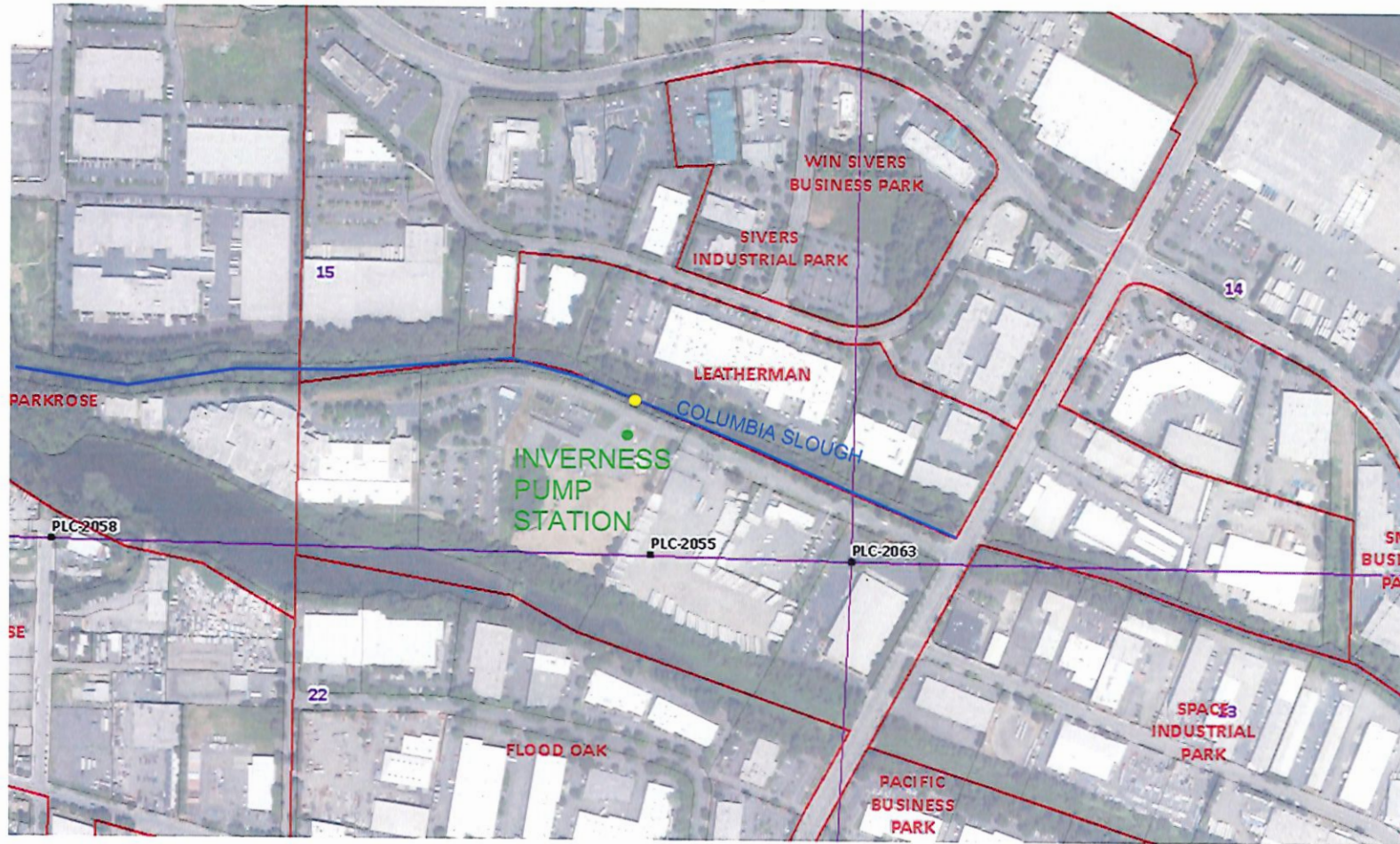


T1N R2E Sec15
PORTLAND, OR

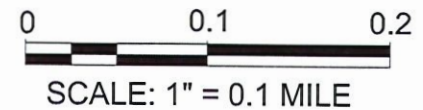


POD located approximately 528 feet N and 739 feet W from SE corner, Section 15.

LEGEND

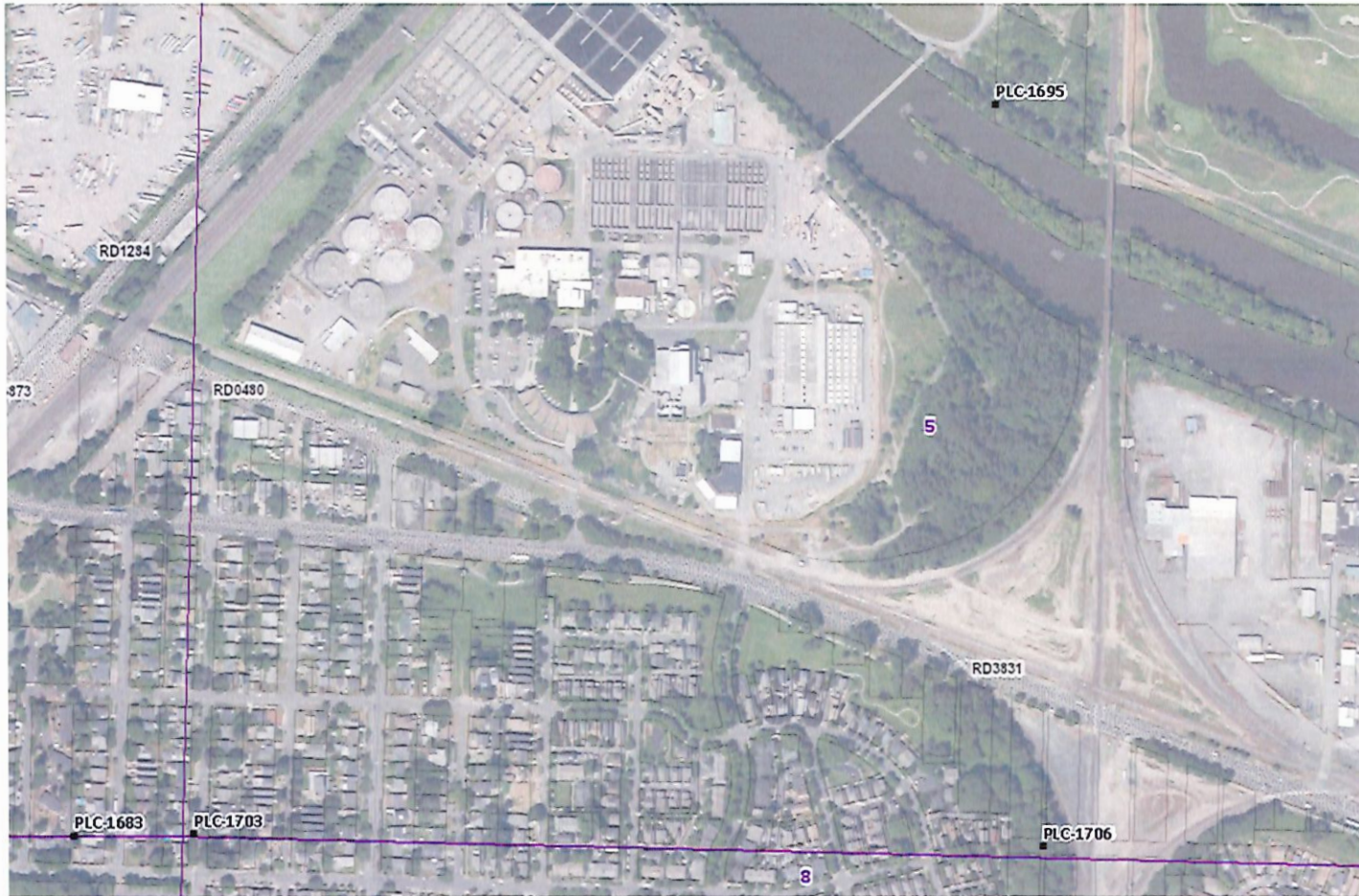
- POD
- LOCATION OF DIVERSION
- REFERENCE CORNER/PLS
- PLACE OF USE

RECEIVED
AUG 07 2025
OWRD



LL-2015

T1N R1E Sec05
PORTLAND, OR

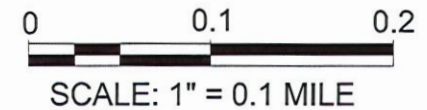


CBWWTP (Disposal Plant) located approximately 1848 feet N and 1110 feet E from SW corner, section 05.

LEGEND

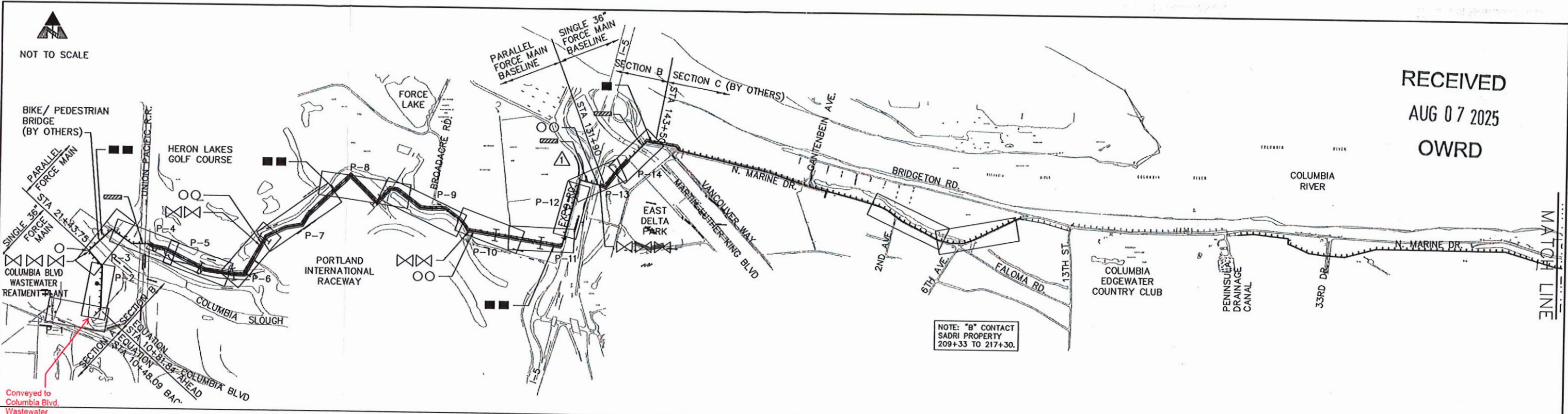
- CBWWTP
- REFERENCE CORNER/PLS

RECEIVED
AUG 07 2025
OWRD

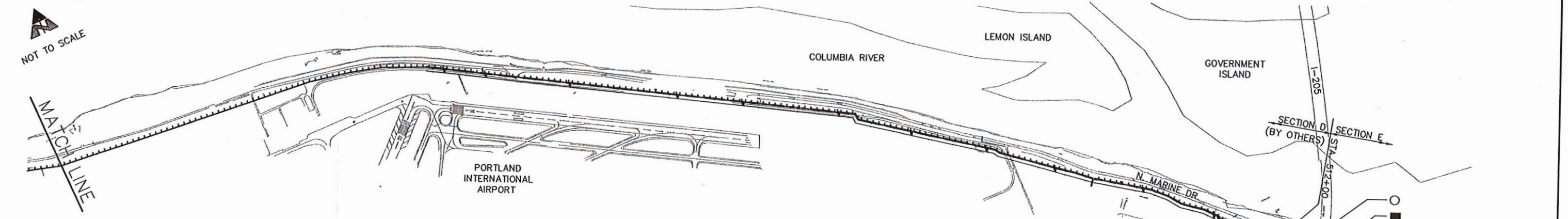


LL-2015

RECEIVED
AUG 07 2025
OWRD



NOTE: "B" CONTACT
SADRI PROPERTY
209+33 TO 217+30.



POTENTIAL UNDERGROUND FACILITY OWNERS "ONE CALL" UTILITY NOTIFICATION CENTER 246-6699

AT&T	CITY WATER
CHEVRON PIPELINE	GTE
NW NATURAL GAS	NW PIPELINE
OLYMPIC PIPELINE	PGE
SANTA FE PIPELINE	PP&L
SPRINT	ODOT-STATE HWYS
ELECTRIC LIGHTWAVE	US WEST
WESTERN UNION	TCI CATV (WESTSIDE)
TCI CATV (HAYDON IS)	TCI CATV (EASTSIDE)
PARAGON CATV	
CITY FIRE ALARM	823-4013
CITY IRRIGATION	823-1610
CITY SEWERS	823-1779
CITY STREET LIGHTS	823-5217
CITY TRAFFIC SIGNALS	823-5185
CITY STREET TREES	823-4489
PORTLAND INTERNATIONAL AIRPORT - RIC HELLNER	335-1175

GENERAL NOTES

- BETWEEN STA 21+44 TO STA 21+71 AND BETWEEN STA 26+55 TO 131+86. THE BASELINE SURVEY IS AT THE CENTER BETWEEN THE 20" AND 30" FORCE MAINS. EACH MAIN IS OFFSET THE BASELINE BY 3' EITHER SIDE. TOTAL DISTANCE BETWEEN MAINS IS 6' CENTER TO CENTER.
- ALL EXCAVATORS PERFORMING WORK ON THIS PROJECT MUST COMPLY WITH THE PROVISIONS OF O.R.S. 757.541 TO 757.571. (REQUIRES CONTRACTOR TO NOTIFY UTILITIES 48 BUSINESS DAY HOURS, BUT NOT MORE THAN 10 BUSINESS DAYS, PRIOR TO EXCAVATION).
- LOCATION OF ALL EXISTING UTILITIES SHALL BE THE RESPONSIBILITY OF THE CONTRACTOR. NOTIFY ENGINEER OF ANY DISCREPANCIES BETWEEN FIELD LOCATIONS AND PLANS PRIOR TO CONSTRUCTION.
- CONTRACTOR SHALL PROTECT, SHORE, BRACE OR OTHERWISE SUPPORT UTILITY POLES LOCATED WITHIN 15 FT. OF THE FORCE MAIN ALIGNMENT. METHOD OF PROTECTION SHALL BE ACCEPTABLE TO PP&L AND US WEST.
- SERVICE LINES FOR SANITARY SEWER, NATURAL GAS, CABLE, WATER, AND ELECTRICAL ARE NOT INDICATED. CONTRACTOR SHALL LOCATE LINES BY PROSPECTING IN ADVANCE OF TRENCHING ACTIVITIES.
- AT POTABLE WATER LINE CROSSINGS, A FULL LENGTH OF FORCE MAIN PIPE SHALL BE CENTERED AT THE CROSSING POINT.
- REFER TO SPECIFICATIONS FOR TYPE OF PAVEMENT REPLACEMENT FOR EACH LOCATION.

LEGEND

- ⊗ MAIN LINE VALVE
- AVRS
- BLOWOFF
- ▨ PIPE UNDERCROSSING
- ⊥ REUSE STATION

DATUM

- THE HORIZONTAL DATUM IS BASED ON OREGON STATE PLANE COORDINATE SYSTEM, 1927 DATUM NORTH ZONE.
- ELEVATIONS REFER TO CITY OF PORTLAND DATUM, UNLESS OTHERWISE NOTED. THE RELATIONSHIPS BETWEEN THE CITY OF PORTLAND DATUM AND NATIONAL GEODETIC VERTICAL DATUM (NGVD) ARE AS SHOWN BELOW
CITY 0 NGVD -1.375

CITY OF PORTLAND
ENVIRONMENTAL SERVICES
AS-BUILT



THESE CONFORMING DRAWINGS REPRESENT THE BID SET CONTRACT DOCUMENTS DATED 1996, INCLUDING ALL BID ADDENDUMS, ENGINEER'S ORIGINAL DESIGN BY THE WORK, THE BID SET CONTRACT DOCUMENTS WERE ORIGINALLY SEALED AND SIGNED BY ROBERT MCCOLLUM, HDR ENGINEERING, INC. OREGON P.E. NO. 17691

INVERNESS FORCE MAIN - SECTION B&E
GENERAL
SITE PLAN

NO.	DATE	DESCRIPTION	APPD.
3	12/98	AS-BUILT	BRF
2	1/13/97	DELETE VALVE VAULT	RGM
1	7/26/96	ADDENDUM NO. 1	RGM
FINAL MAP DATA			
5152BG03, 12/07/98 at 09:21			

1/4 SECTION
JOB NO. 5152
SHEET NO. G-3
3 OF 52

LL-2015