

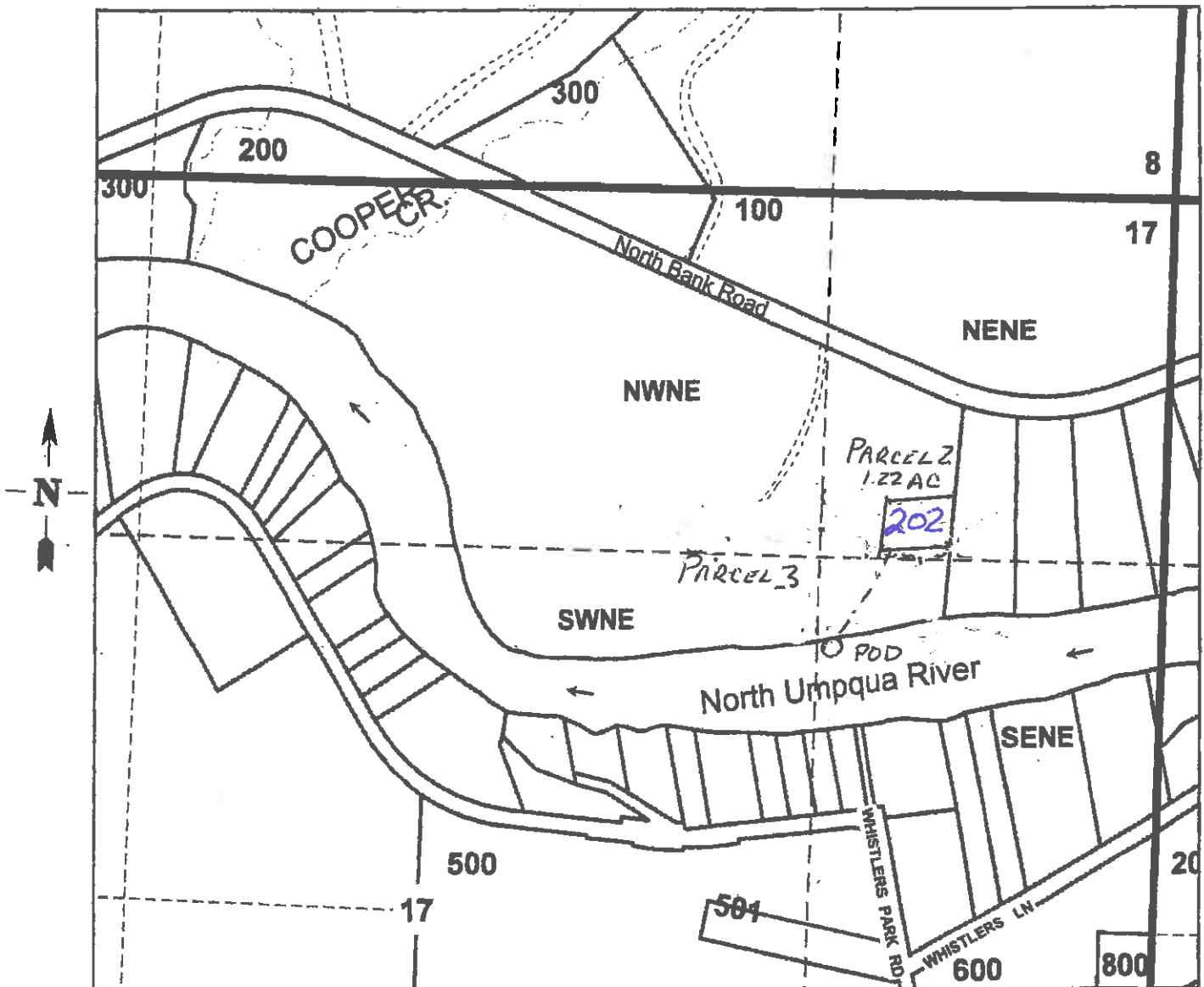
E-RECEIVED

SEP 9, 2025

OWRD

SEC.17 T.26S. R.4W. W.M.  
DOUGLAS COUNTY  
Scale 1" = 600'

Application Map



PIPE - - - -

Point of Diversion is 1670 ft. South and 1200 ft. West from the NE Corner of Section 17

8-87685