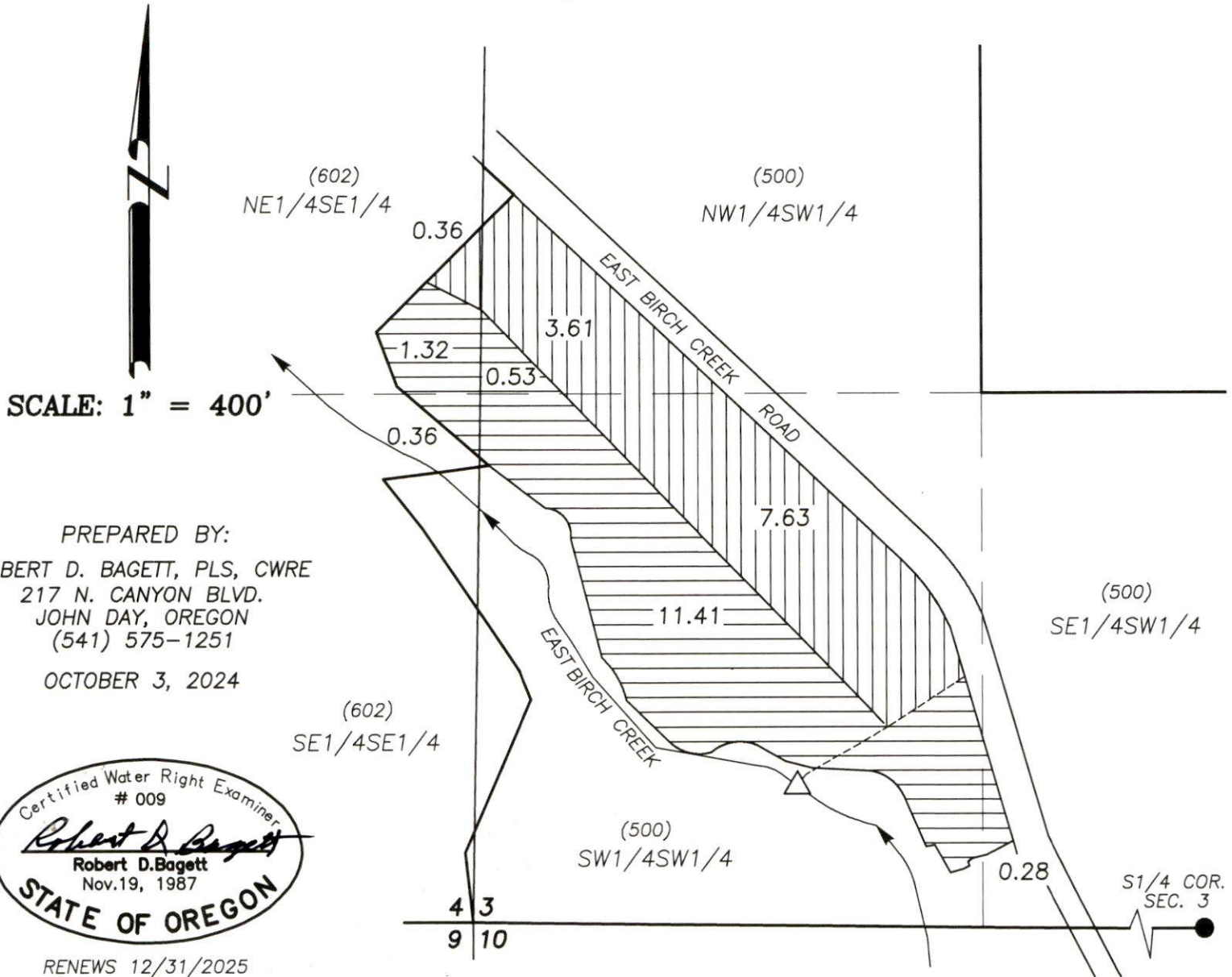


T.2S., R.32E., W.M., UMATILLA COUNTY, OREGON
CLAIM OF BENEFICIAL USE MAP UNDER TRANSFER NO. T-11357
FOR TRUDY DRAPER



△ NEW POD— PUMP WITH FISH SCREEN: 380 FT. NORTH & 1800 FT. WEST FROM S1/4 COR. SECTION 3, T.2S., R.32E. PUMP BEARS N.35°E., 36 FT. FROM POD; FLOW METER BEARS N.46°E., 37 FT. FROM POD

PRIMARY — PRIORITY DATE 1875: 11.6 AC.

PRIMARY — PRIORITY DATE 1892: 13.9 AC.

----- BURIED PIPELINE WITH RISERS

() TAX LOT NO.

● FOUND RECORD DRILL STEEL MONUMENT AT S1/4 CORNER SECTION 3, T.2S., R.32E.

Received
NOV 03 2025
OWRD