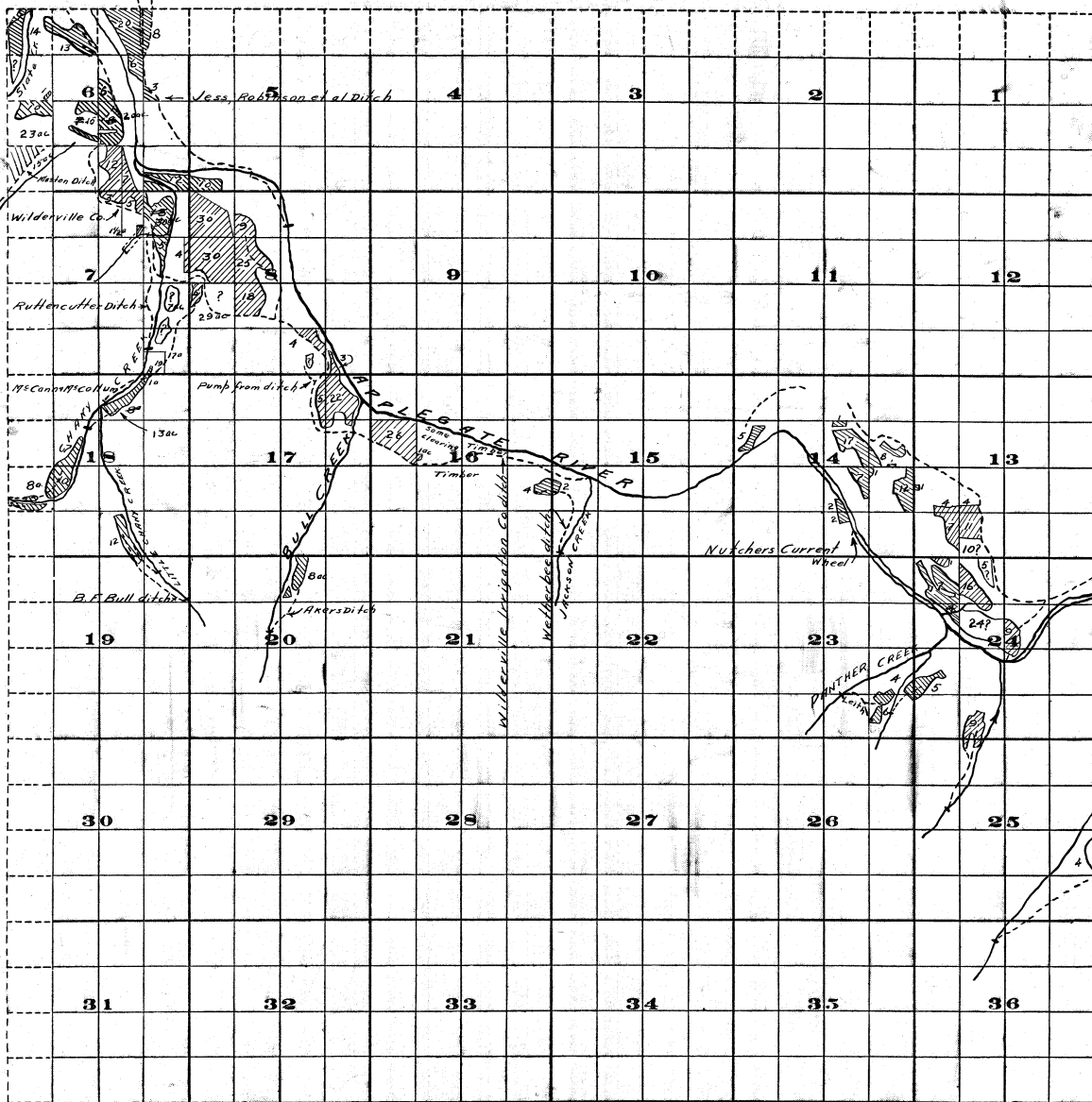


46-5-6

Township 37 S, Range 6 W.

Surveyed by R.D. Cooper, Nov. 1909.

FROM OFFICE OF THE STATE ENGINEER, SALEM, OREGON

M.D.
2000-11-11

Scale of Feet.

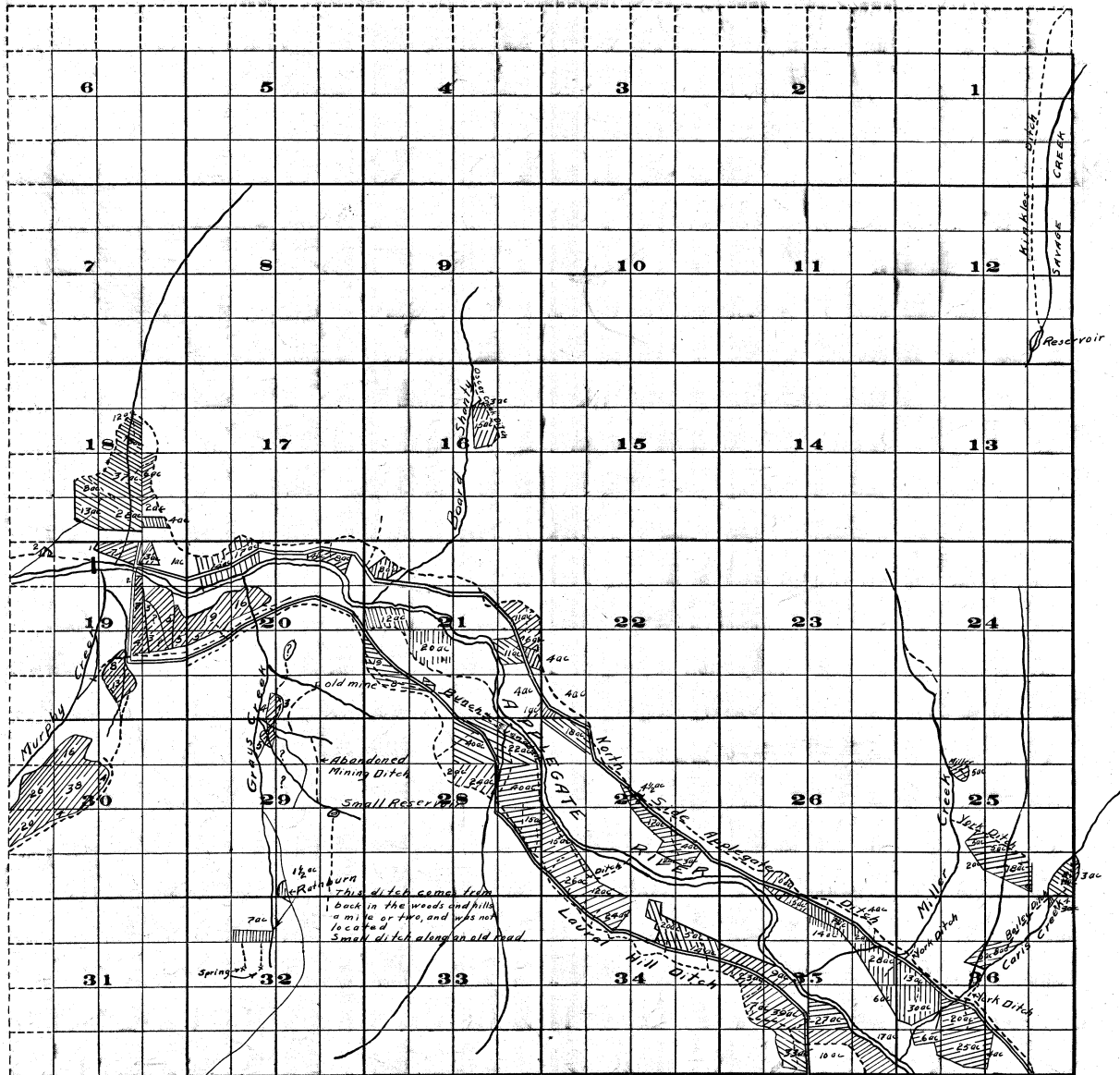
Ajudication

Rogue River and Tributaries
John H. Lewis State Engr.

Examined Sept. 18, 1911

43-5-6

Township 37S., Range 5W.



Survey by R.D. Cooper Dec. 1909 and by J.S. McMahon April 1910
 Scale of Feet.

FROM OFFICE OF THE STATE ENGINEER, MALEM, OREGON

Ajudication

Rogue River and Tributaries

John H. Lewis State Engr.

Examined Sept. 18, 1911

34

37S.5W.