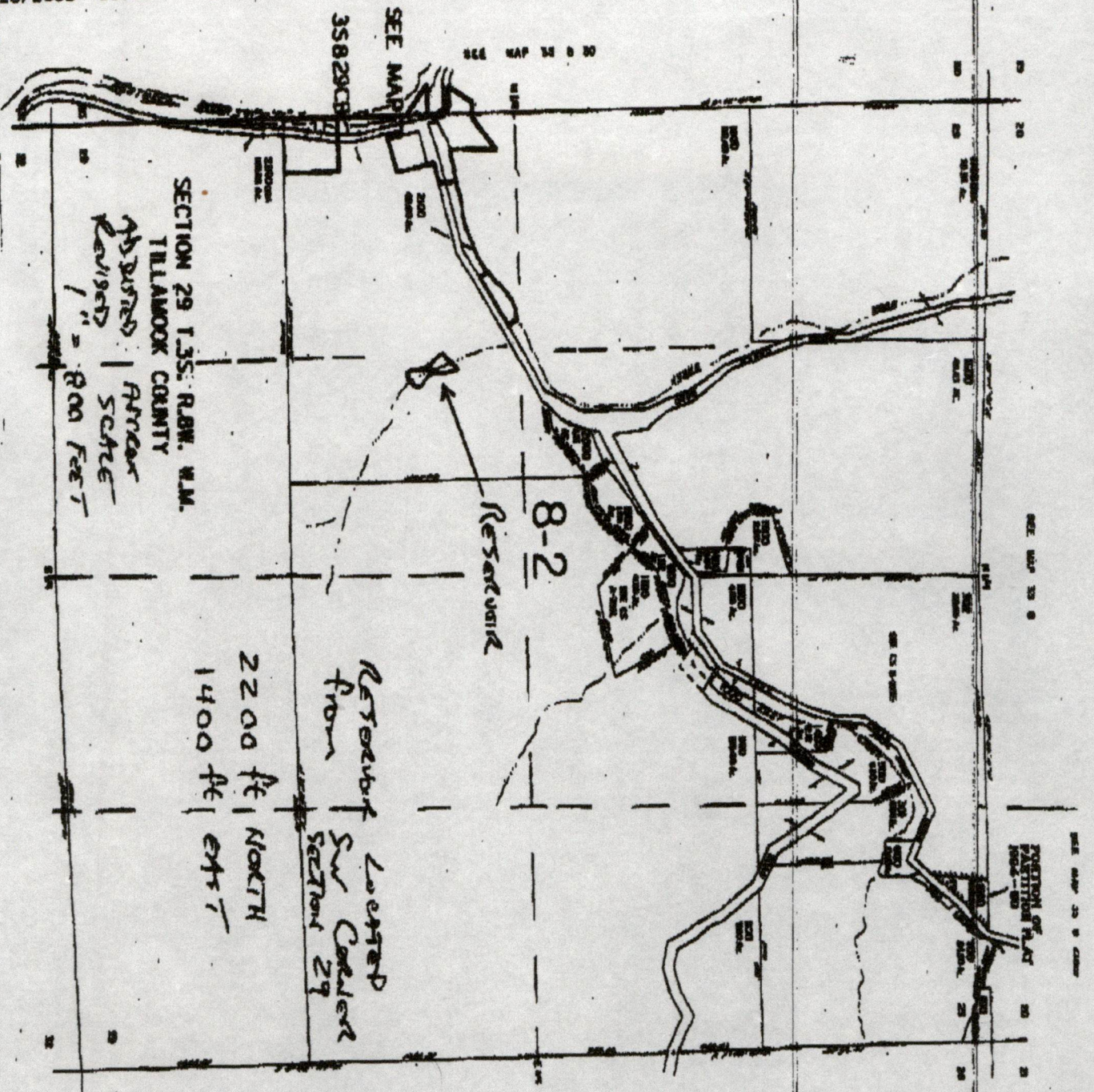


10/23/2008 09:29

5039860901

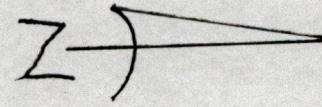
WRD 1ST FL



SECTION 29 T.35S. R.8W. W.M.
 TILLAMOOK COUNTY
 ADJUSTED AREA
 REVISIONS
 1" = 800 FEET

Reservoir Located
 from SW Corner
 SECTION 29
 2200 ft NORTH
 1400 ft EAST

8-2
 Reservoir



Received
 FEB 23 2026
 OWRPD

35 8 29