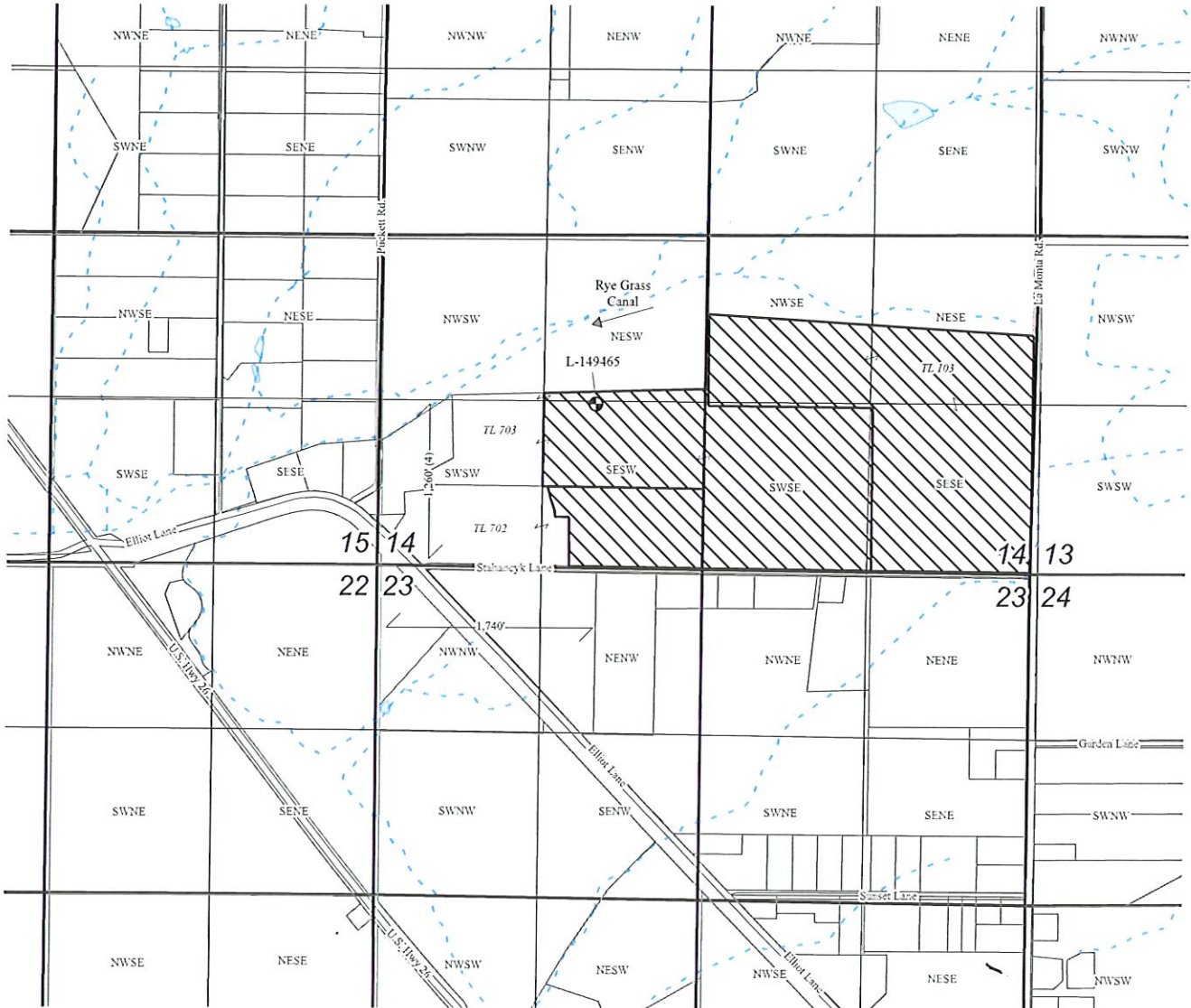


Received
MAR 12 2026
OWRD

T14S, R15E WM, Section 14
Crook County, Oregon
LIMITED LICENSE APPLICATION MAP
Knife River Corporation



Explanation

- Proposed Industrial/Commercial Place of Use
- PLSS
- Taxlots
- Water Bodies
- Streams
- Roads
- Well L-149465 (44.352102, -120.900085)

0 330 660 990 1,320 ft



1 inch = 1,320 feet

This map is not intended to provide legal dimensions or locations of property ownership lines.

NAD 1983 HARN
Datum of 1933
Prepared Jan 29, 2026

Sources: Crook County Open Data Portal (PLSS, roads, taxlots, streams).
Latitude & Longitude of well provided by Knife River.

EnviroLogic Resources, Inc.
ENVIRONMENTAL WATER RESOURCES SCIENTISTS



FIGURE 1
Knife River
Corporation-Northwest
Prineville, Oregon