

THIS MAP WAS PREPARED FOR ASSESSMENT PURPOSE ONLY.

SEC.17 T.26S. R.3W. W.M.  
DOUGLAS COUNTY

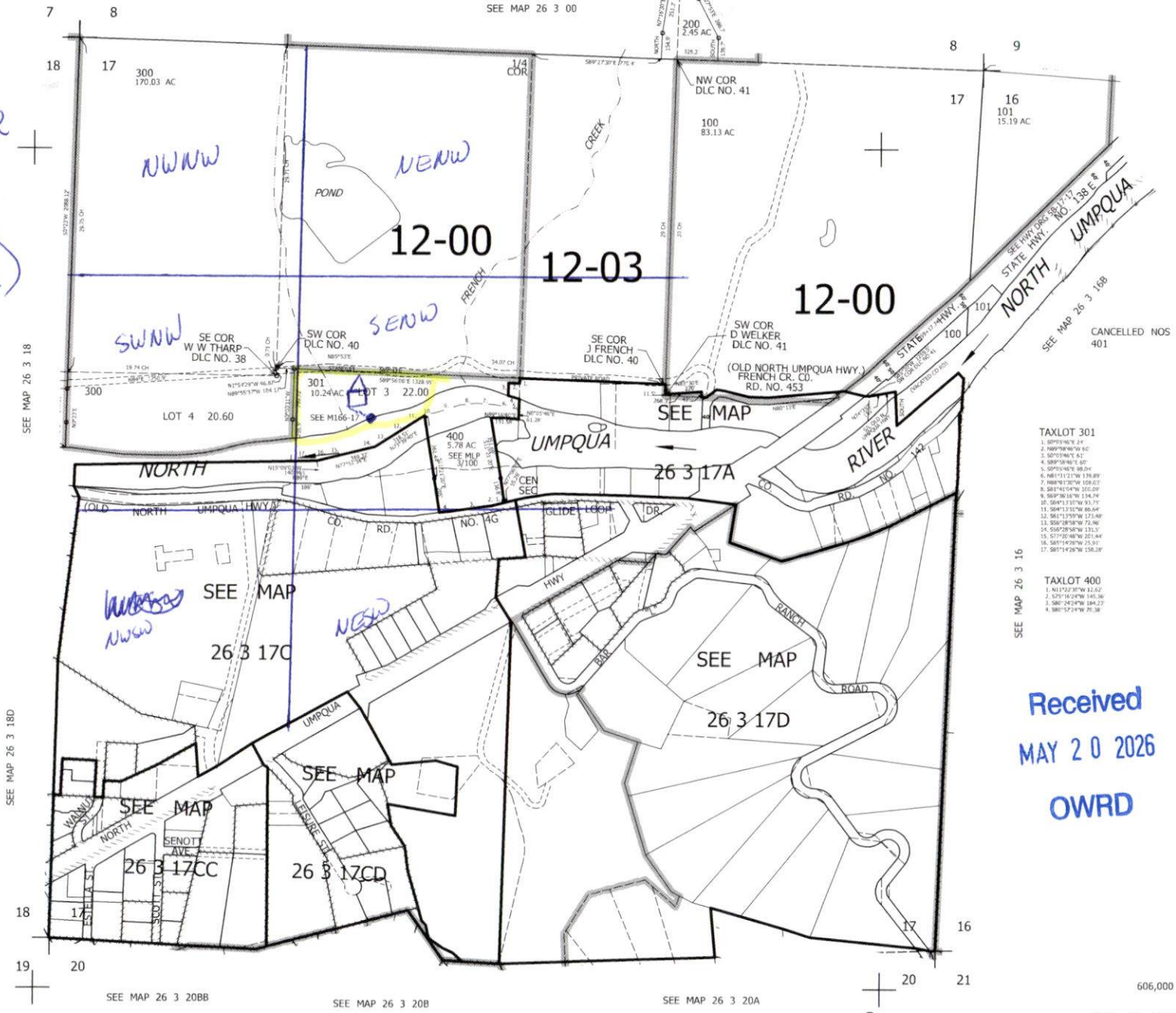
REVISED ON  
3-16-20

26 3 17  
& INDEX

1" = 400'  
TAXLOT = 301

SEE MAP 26 3 00

↑ N  
house  
• POD  
↓  
(43.30949  
-123.08292)



- TAXLOT 301
1. 88°55'42"E 24'
  2. 88°55'42"W 60'
  3. 82°55'42"E 41'
  4. 88°55'42"E 60'
  5. 82°55'42"E 88.04'
  6. 88°11'21"W 139.89'
  7. 88°41'30"W 108.02'
  8. 88°55'42"E 88.04'
  9. 88°55'42"W 108.02'
  10. 88°55'42"W 134.74'
  11. 88°11'21"W 88.04'
  12. 88°11'21"W 171.48'
  13. 88°55'42"W 72.96'
  14. 88°55'42"W 123.3'
  15. 82°55'42"W 221.44'
  16. 88°11'21"W 231.91'
  17. 88°11'21"W 158.28'

- TAXLOT 400
1. 88°11'21"W 112.02'
  2. 82°55'42"W 145.36'
  3. 88°11'21"W 184.23'
  4. 88°11'21"W 75.38'

Received  
MAY 20 2026  
OWRD

• POD - 2350' S, 1650' E From NW corner, sec 17

26 3 17  
& INDEX