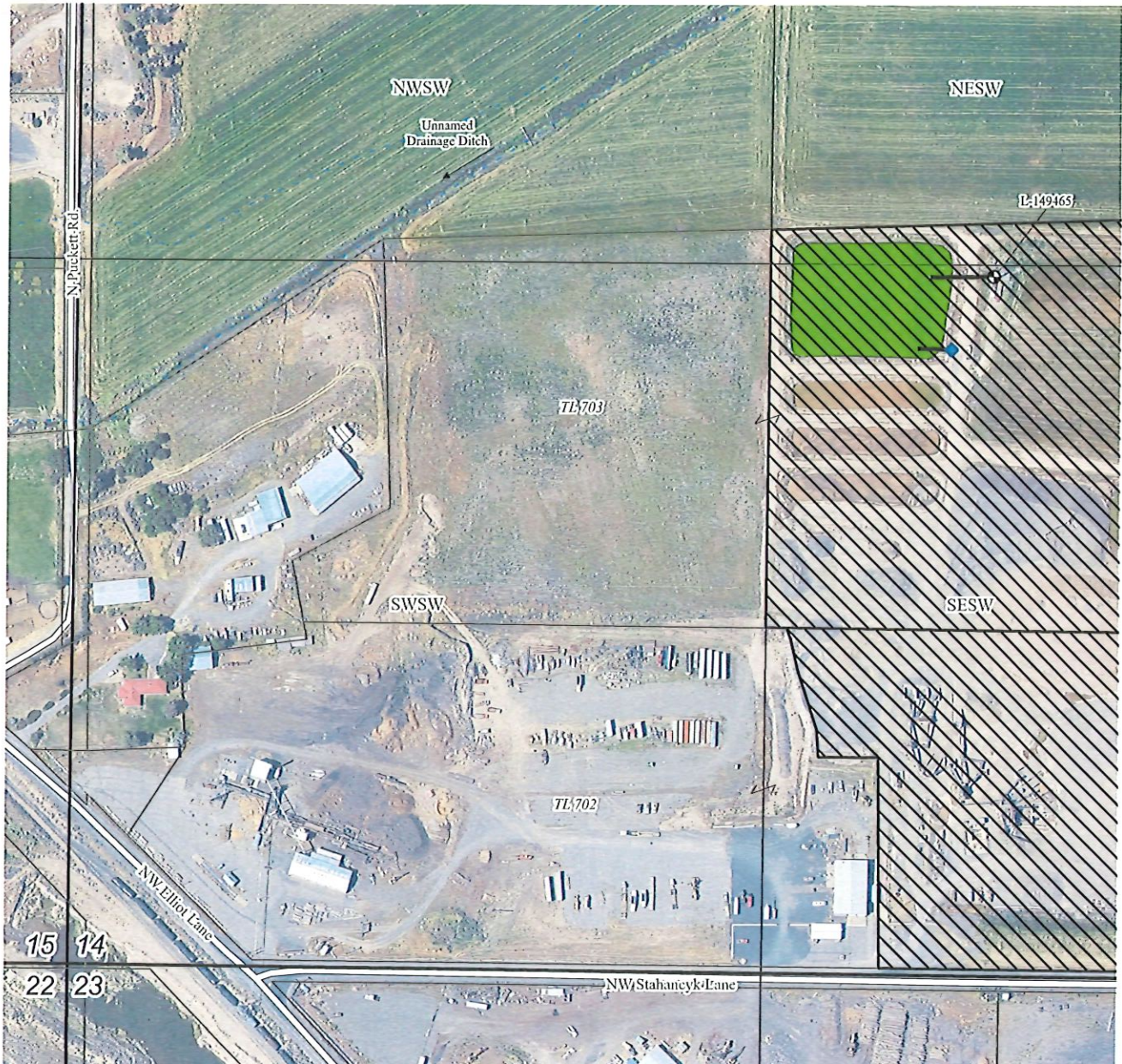
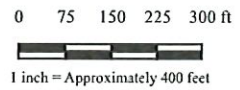


T14S, R15E WM, Section 14
 Crook County, Oregon
 Knife River - Woodward Site



Explanation

- | | | | | | |
|--|---|--|--------------|--|---|
| | Proposed Industrial/Commercial Place of Use | | Water Bodies | | Well L-149465
(44.352102, -120.900085) |
| | Mine Pond | | Streams | | Filling Station |
| | PLSS | | Mainline | | |
| | Taxlots | | Roads | | |



This map is not intended to provide legal dimensions or locations of property ownership lines.

NAD 1983 HARN
 Datum of 1983
 Revised May 20, 2026

Sources: Crook County Open Data Portal (PLSS, roads, taxlots, streams),
 Latitude & Longitude of well provided by Knife River.



RECEIVED
 MAY 20 2026
 OWRD



MINE POND LOCATION
 Prineville, Oregon