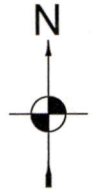
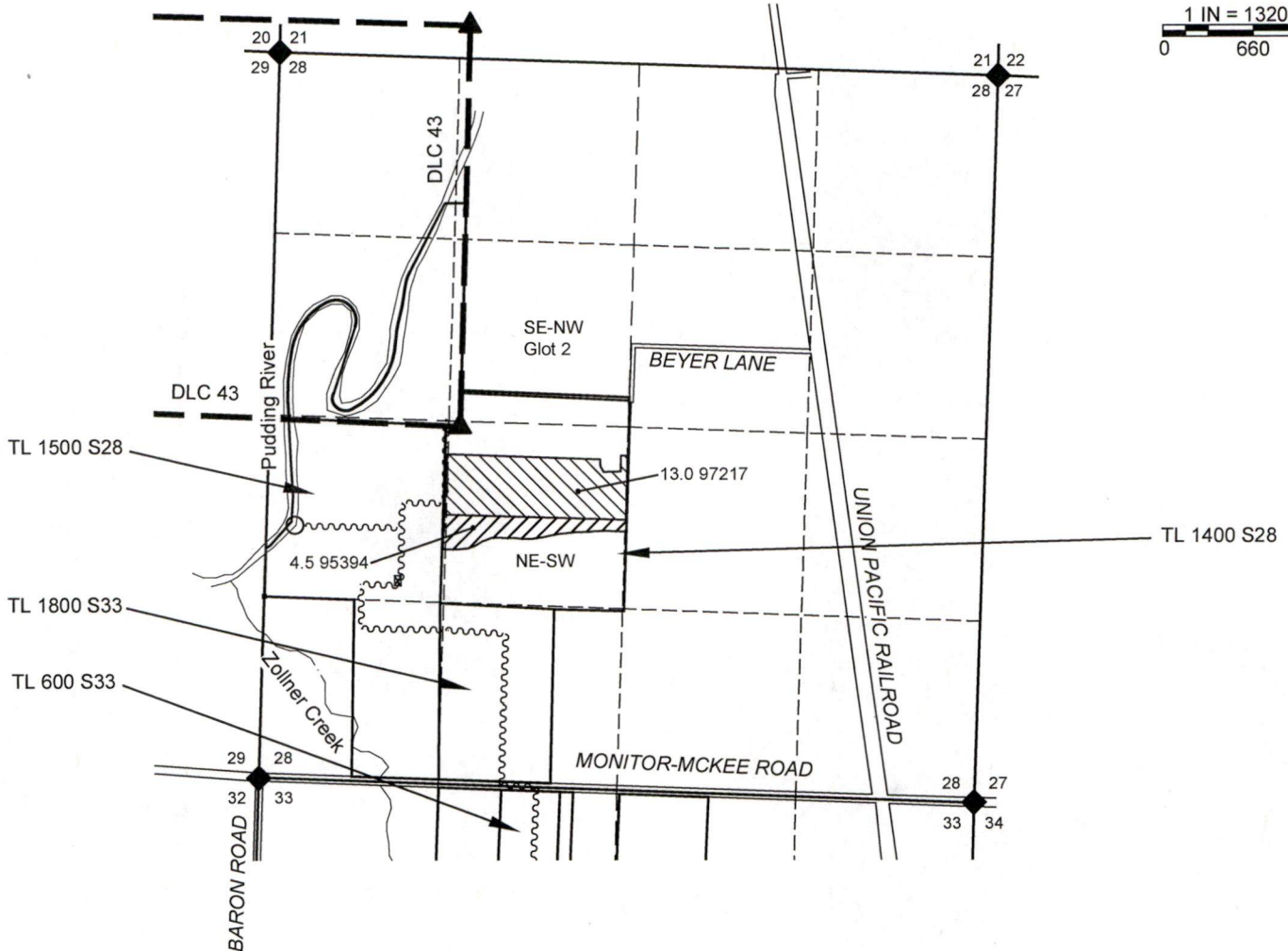


Claim of Beneficial Use Map

Section 28, T5S, R1W, Marion County
Transfer T-14287



1 IN = 1320 FT
0 660 1320



LOCATION OF WELL AND METER:

WELL #5: 2390' S AND 2800' E OF NW S33, SEE FROM MAP, AND 45.093700° N, 122.814783° W, WGS84.

NOTES:

- THIS MAP IS NOT INTENDED TO PROVIDE LEGAL DIMENSIONS OR LOCATIONS OF PROPERTY OWNERSHIP LINES.
- PROPERTY LINES AND QUARTER-QUARTER LINES ARE BASED ON THE TAX ASSESSOR MAP FOR SECTIONS 28 & 33, T5S, R1W.
- THE METER IS AT THE WELL LOCATION.



Expires 30 JUN 2026

LEGEND

- DONATION LAND CLAIM (DLC) CORNER
- SECTION CORNER
- POINT OF DIVERSION OR APPROPRIATION
- STREAM OR SURFACE DRAINAGE
- TAX LOT LINE
- SECTION LINE
- QUARTER-QUARTER LINE
- DLC LINES
- CONVEYANCE PIPELINES.
- TO ACRES 97217 Irrig
- TO ACRES 95394 Irrig

Received by OWRD

JUN 17 2026

Salem, OR

MAP BY:
ASPEN RURAL LAND CONSULTING

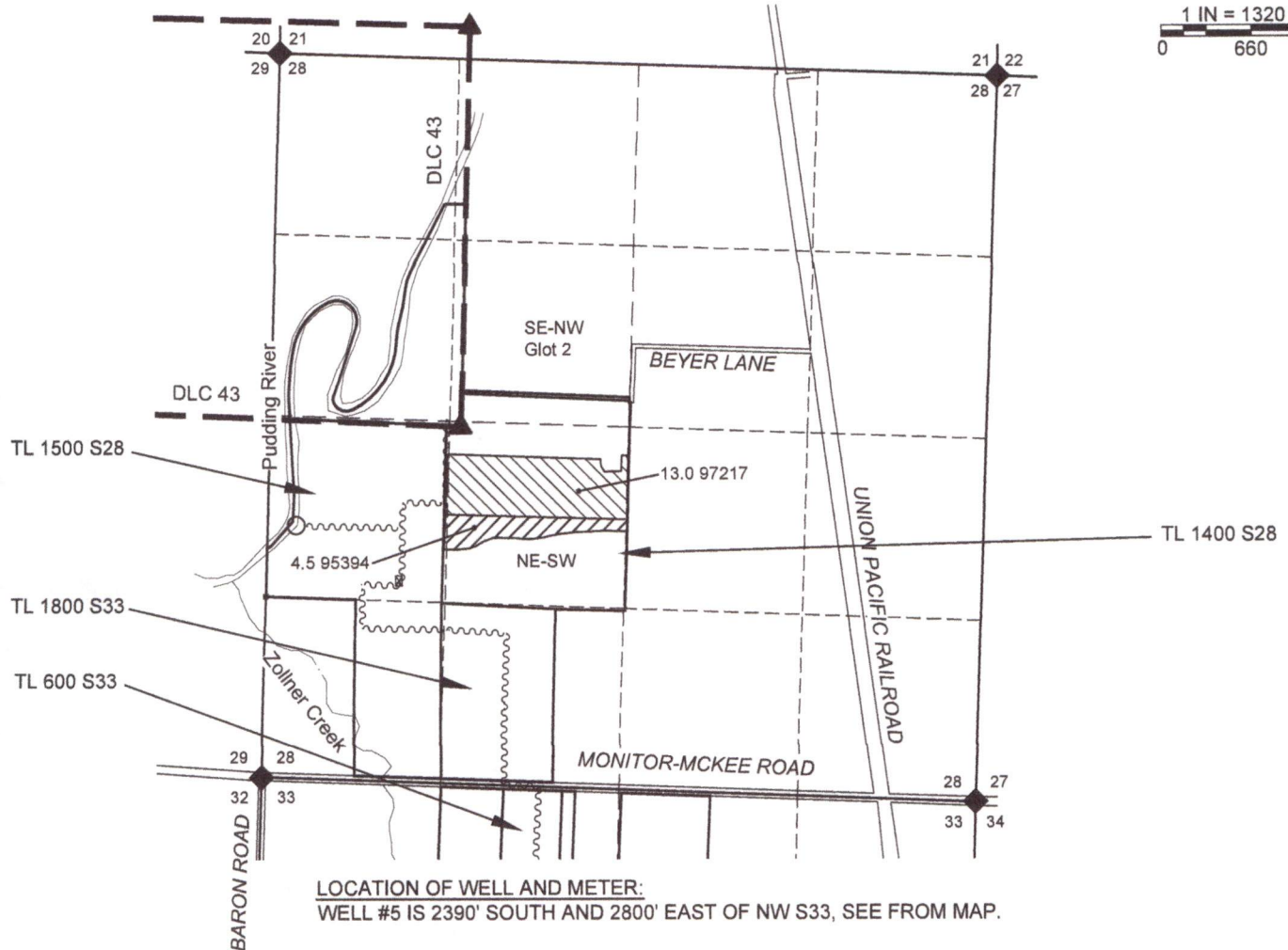
ERIC URSTADT, PE, PLS
971-250-1520
JUN 2026
FesslerJoeBeyer80

Claim of Beneficial Use Map

Section 28, T5S, R1W, Marion County
Transfer T-14287



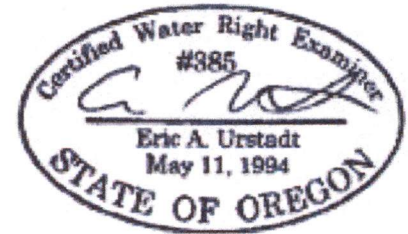
1 IN = 1320 FT
0 660 1320



LOCATION OF WELL AND METER:
WELL #5 IS 2390' SOUTH AND 2800' EAST OF NW S33, SEE FROM MAP.

- NOTES:
- THIS MAP IS NOT INTENDED TO PROVIDE LEGAL DIMENSIONS OR LOCATIONS OF PROPERTY OWNERSHIP LINES.
 - PROPERTY LINES AND QUARTER-QUARTER LINES ARE BASED ON THE TAX ASSESSOR MAP FOR SECTIONS 28 & 33, T5S, R1W.
 - THE METER IS AT THE WELL LOCATION.

Superseded



Expires 30 JUN 2026

- LEGEND**
- ◆ DONATION LAND CLAIM (DLC) CORNER
 - ◆ SECTION CORNER
 - POINT OF DIVERSION OR APPROPRIATION
 - - - - - STREAM OR SURFACE DRAINAGE
 - TAX LOT LINE
 - SECTION LINE
 - - - - - QUARTER-QUARTER LINE
 - DLC LINES
 - ~~~~~ CONVEYANCE PIPELINES.
 - ▨ TO ACRES 97217 Irrig
 - ▩ TO ACRES 95394 Irrig

Received
JUN 12 2026
OWRD

MAP BY:
ASPEN RURAL LAND CONSULTING
ERIC URSTADT, PE, PLS
971-250-1520
MAY 2026
FesslerJoeBever8N