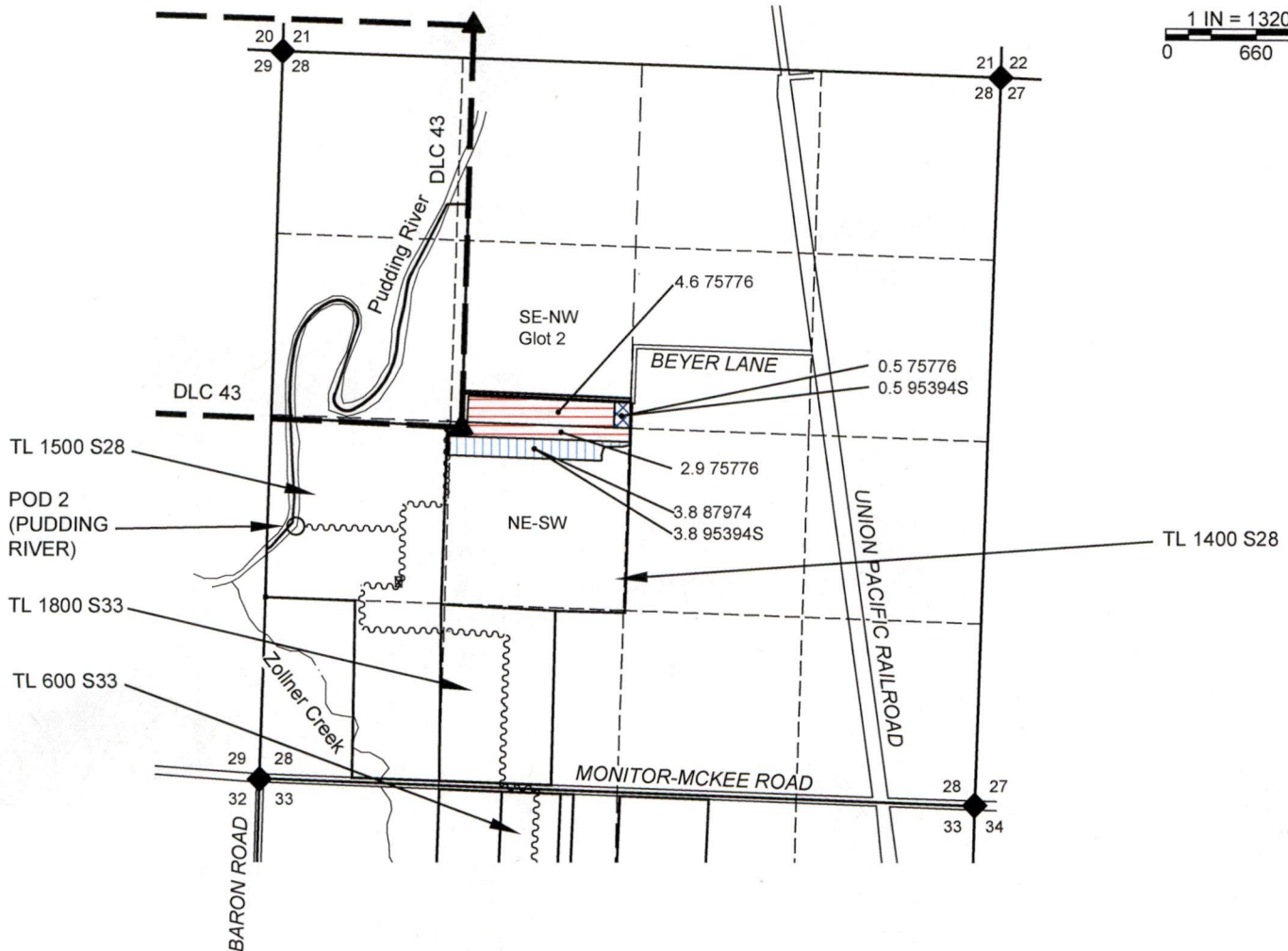


# Claim of Beneficial Use Map

Section 28, T5S, R1W, Marion County  
Transfer T-14288



1 IN = 1320 FT  
0 660 1320



**LOCATIONS OF POINTS OF DIVERSION (POD) AND WELLS:**

- POD 1 (ZOLLNER) : 1630' S AND 2340' E OF NW S33 (PER CERT. 87974), AND 45.095741° N LAT, 122.816531° W LONG, WGS84
- POD 2 (PUDDING CREEK) : 1830' N AND 260' E FROM NW S33 (ADDITIONAL), AND 45.105367° N LAT, 122.824789° W LONG, WGS84
- WELL #5: 2390' S AND 2800' E OF NW S33, SEE FROM MAP, AND 45.093700° N LAT, 122.814783° W LONG, WGS84.

**NOTES:**

- THIS MAP IS NOT INTENDED TO PROVIDE LEGAL DIMENSIONS OR LOCATIONS OF PROPERTY OWNERSHIP LINES.
- PROPERTY LINES AND QUARTER-QUARTER LINES ARE BASED ON THE TAX ASSESSOR MAP FOR SECTIONS 28 & 33, T5S, R1W.
- THE METERS ARE AT THE POD AND WELL LOCATIONS.
- THE FISH SCREENS FOR THE PODS ARE AT THE PODS LOCATIONS.

**LEGEND**

- DONATION LAND CLAIM (DLC) CORNER
- SECTION CORNER
- POINT OF DIVERSION OR APPROPRIATION
- STREAM OR SURFACE DRAINAGE
- TAX LOT LINE
- SECTION LINE
- QUARTER-QUARTER LINE
- DLC LINES
- CONVEYANCE PIPELINES.
- TO ACRES 75776 Irrig
- TO ACRES 75776 Irrig & 95394 Suppl
- TO ACRES 87974 Irrig & 95394 Suppl



Expires 30 JUN 2026

Received by OWRD

JUN 17 2026

Salem, OR

MAP BY:  
**ASPEN RURAL LAND CONSULTING**

ERIC URSTADT, PE, PLS  
971-250-1520  
JUN 2026

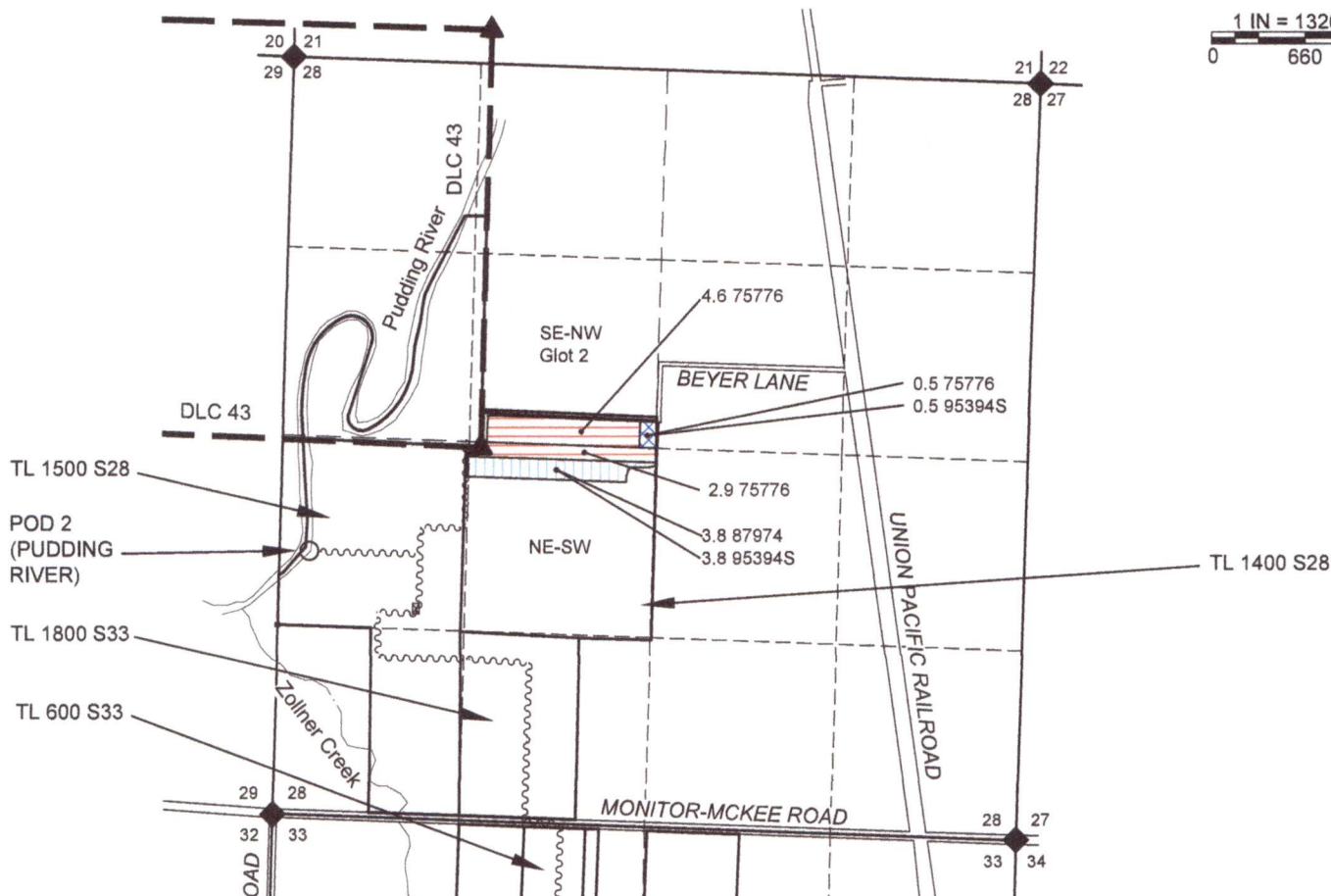
FesslerJoeBeyer80

# Claim of Beneficial Use Map

Section 28, T5S, R1W, Marion County  
Transfer T-14288



1 IN = 1320 FT  
0 660 1320



**LOCATIONS OF POINTS OF DIVERSION (POD) AND WELLS:**

- POD 1 (ZOLLNER) IS 1630' SOUTH AND 2340' EAST OF NW S33 (PER CERT. 87974), SEE FROM MAP.
- POD 2 (PUDDING CREEK) IS 1830' NORTH AND 260' EAST FROM NW S33 (ADDITIONAL)
- WELL #5 IS 2390' SOUTH AND 2800' EAST OF NW S33, SEE FROM MAP.

**NOTES:**

- THIS MAP IS NOT INTENDED TO PROVIDE LEGAL DIMENSIONS OR LOCATIONS OF PROPERTY OWNERSHIP LINES.
- PROPERTY LINES AND QUARTER-QUARTER LINES ARE BASED ON THE TAX ASSESSOR MAP FOR SECTIONS 28 & 33, T5S, R1W.
- THE METERS ARE AT THE POD AND WELL LOCATIONS.
- THE FISH SCREENS FOR THE PODS ARE AT THE PODS LOCATIONS.

**LEGEND**

- DONATION LAND CLAIM (DLC) CORNER
- SECTION CORNER
- POINT OF DIVERSION OR APPROPRIATION
- STREAM OR SURFACE DRAINAGE
- TAX LOT LINE
- SECTION LINE
- QUARTER-QUARTER LINE
- DLC LINES
- CONVEYANCE PIPELINES.
- TO ACRES 75776 Irrig
- TO ACRES 75776 Irrig & 95394 Suppl
- TO ACRES 87974 Irrig & 95394 Suppl

Superseded



Expires 30 JUN 2026

Received  
JUN 12 2026

OWRD

MAP BY:  
**ASPEN RURAL LAND CONSULTING**  
ERIC URSTADT, PE, PLS  
971-250-1520  
MAY 2026  
FesslerJoeBeyer8M