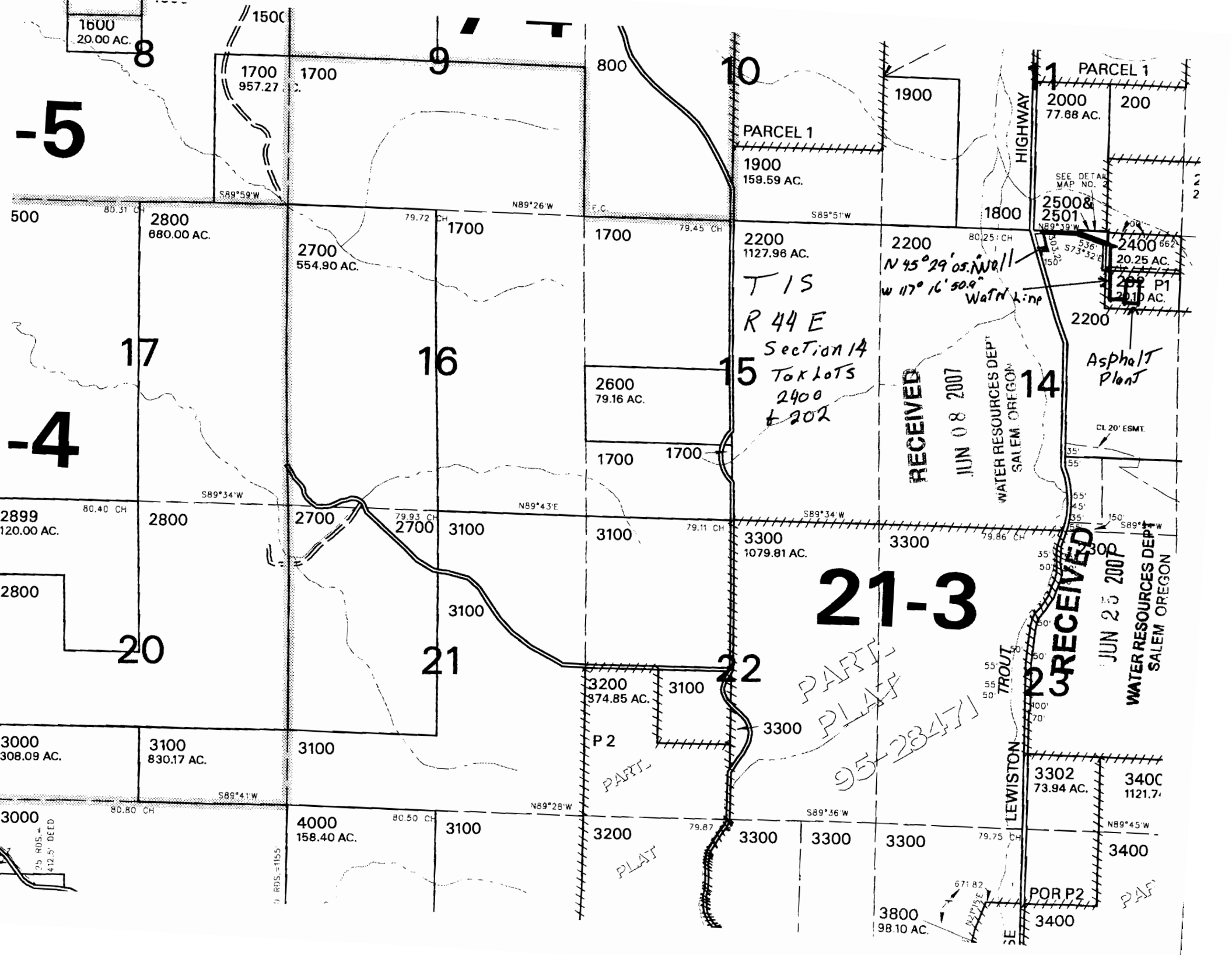


-5

-4

21-3



1600
20.00 AC.

1700
957.27 AC.

8

9

10

11

PARCEL 1
2000
77.88 AC.

2800
680.00 AC.

2700
554.90 AC.

17

16

15

2600
79.16 AC.

2200
1127.98 AC.

2200

2500 &
2501
20.25 AC.

2400
20.10 AC.

Asphalt
Plant

RECEIVED
JUN 08 2007
WATER RESOURCES DEPT
SALEM OREGON

14

CL 20' ESMT

2899
120.00 AC.

2800

2700

3100

3100

3300
1079.81 AC.

3300

3300

RECEIVED
JUN 25 2007
WATER RESOURCES DEPT
SALEM OREGON

20

21

22

3200
374.85 AC.

3100

3300

PART
PLAT

95-23-171

3000
308.09 AC.

3100
830.17 AC.

3100

P 2

3200

3100

3300

3300

3300

3302
73.94 AC.

3400
1121.7

LEWISTON
TROUT

POR P2
3400

3000
308.09 AC.

4000
158.40 AC.

3100

3200

3300

3300

3300

3300

3300

3400

3800
98.10 AC.

3400

PART
PLAT

75 R.D.S. =
412.5' DEED

75 R.D.S. = 1155'

671.82
RAVINE

SE