

PARTITION MP-02-12

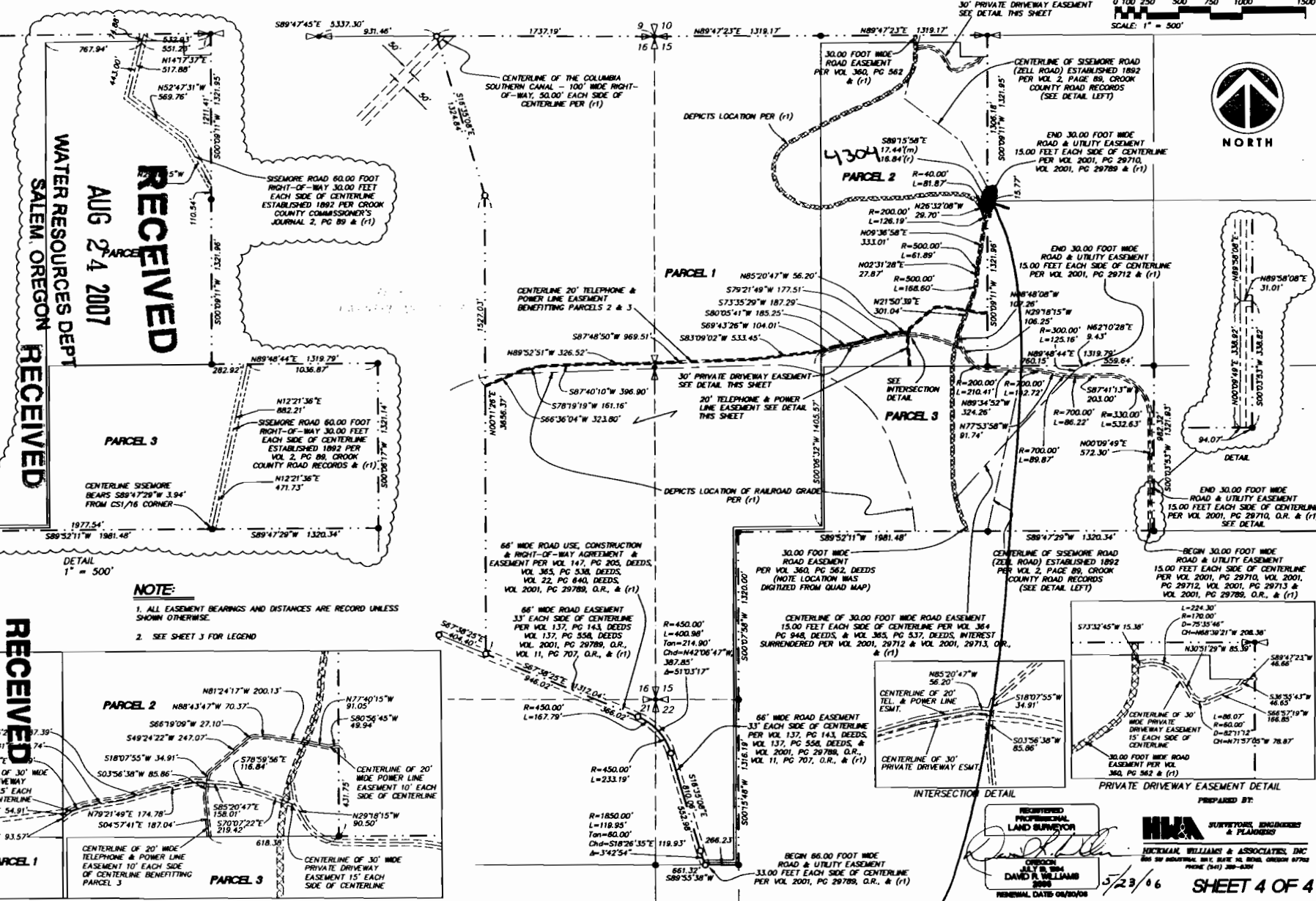
PARTITION PLAT #

LOCATED IN: A PORTION OF SECTION 15, SECTION 16, THE NORTH ONE-HALF OF THE NORTH ONE-HALF OF SECTION 21 AND IN THE NORTHWEST ONE-QUARTER OF THE NORTHWEST ONE-QUARTER OF SECTION 22, TOWNSHIP 17 SOUTH, RANGE 11 EAST, W.M., DESCHUTES COUNTY, OREGON

RECEIVED
AUG 24 2007
WATER RESOURCES DEPT
SALEM, OREGON

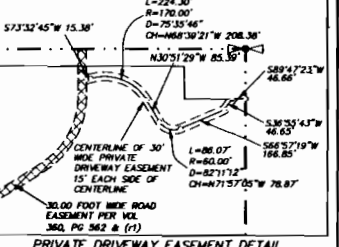
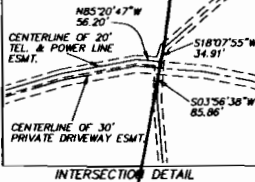
RECEIVED
JUN 21 2007
WATER RESOURCES DEPT
SALEM, OREGON

RECEIVED
JUL 02 2007
WATER RESOURCES DEPT
SALEM, OREGON



NOTE:
1. ALL EASEMENT BEARINGS AND DISTANCES ARE RECORD UNLESS SHOWN OTHERWISE.
2. SEE SHEET 3 FOR LEGEND

PRIVATE DRIVEWAY, TELEPHONE AND POWER LINE EASEMENTS DETAIL



RECORDED
PROFESSIONAL
LAND SURVEYOR
DAVID R. WILLIAMS
2008

PREPARED BY
SURVEYORS, ENGINEERS
& PLANNERS
NICKMAR WILLIAMS & ASSOCIATES, INC
800 SW INDUSTRIAL BLVD, SUITE 300, SEASIDE, OREGON 97138
PHONE (503) 308-3330

5/23/06 SHEET 4 OF 4

020104p.4.dwg

James Verheyden
T 17 R 11 S 15 Tax Lot # 4304 Survey corner used

Pond #1 525 feet
Pond #2 900 feet
Well 450 feet

CS 7067