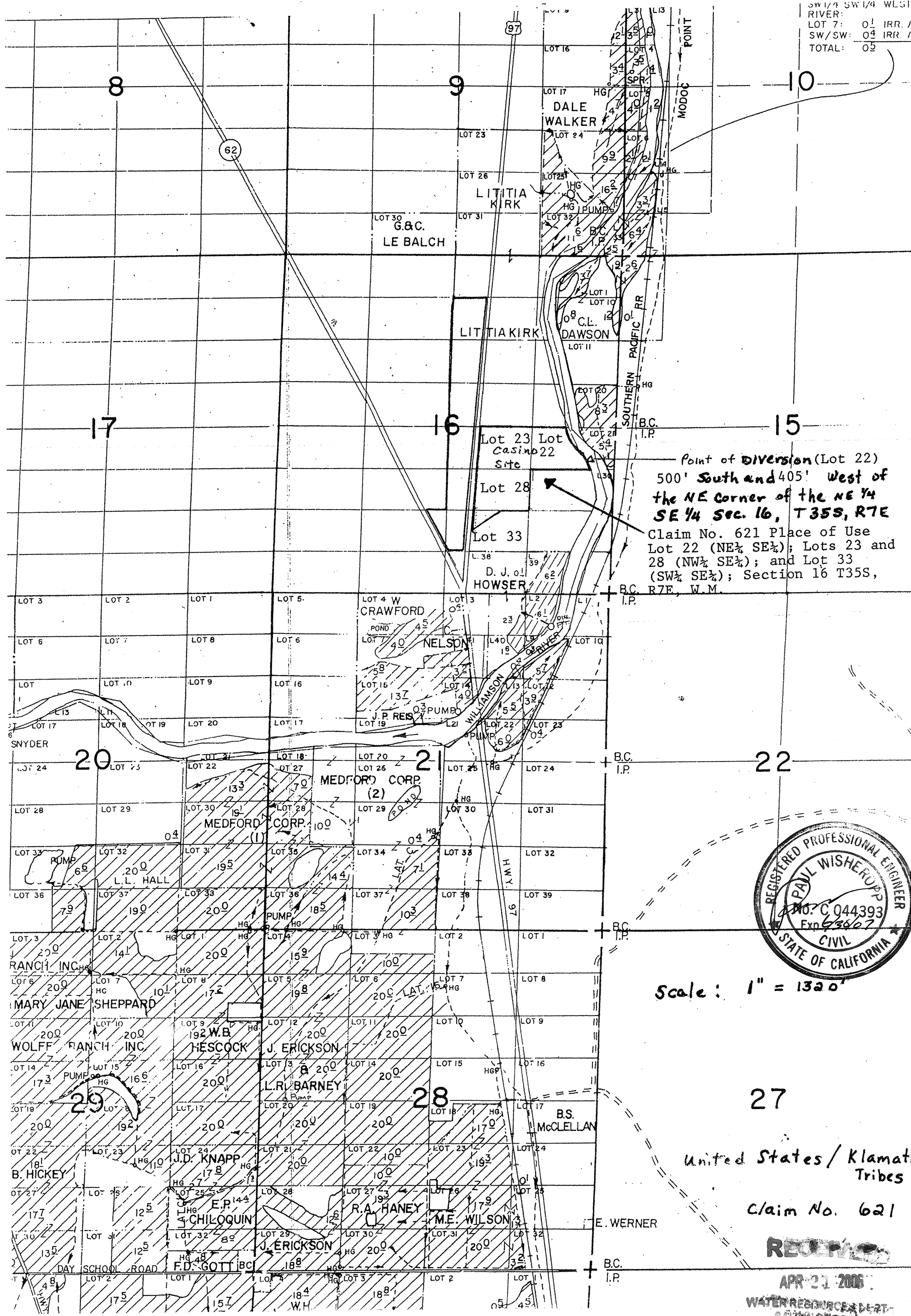
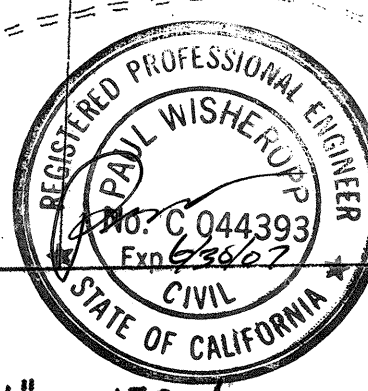


# TOWNSHIP 35 SOUTH, RANGE 7 EAST, W. M.

SW 1/4 SW 1/4 WLS1  
 RIVER:  
 LOT 7: 0.1 IRR. /  
 SW/SW: 0.4 IRR. /  
 TOTAL: 0.5



Point of Diversion (Lot 22)  
 500' South and 405' West of  
 the NE Corner of the NE 1/4  
 SE 1/4 Sec. 16, T35S, R7E  
 Claim No. 621 Place of Use  
 Lot 22 (NE 1/4 SE 1/4); Lots 23 and  
 28 (NW 1/4 SE 1/4); and Lot 33  
 (SW 1/4 SE 1/4); Section 16 T35S,  
 R7E, W.M.



Scale: 1" = 1320'

27  
 United States / Klamath  
 Tribes  
 Claim No. 621

RECEIVED  
 APR 21 2006  
 WATER RESOURCES DEPT.  
 SALEM, OREGON