

SCALE: 1" = 400'

CLAIM No. 123 SETTLEMENT CLAIM MAP

WALTON IRRIGATED LANDS

CLAIMANT: TAYLOR HYDE

IRRIGATED LANDS SITUATED IN TOWNSHIP 36 SOUTH, RANGE 12 EAST
IN THE NE 1/4, SE 1/4 OF SECTION 3 AND NE 1/4 SECTION 10

KLAMATH COUNTY, OREGON

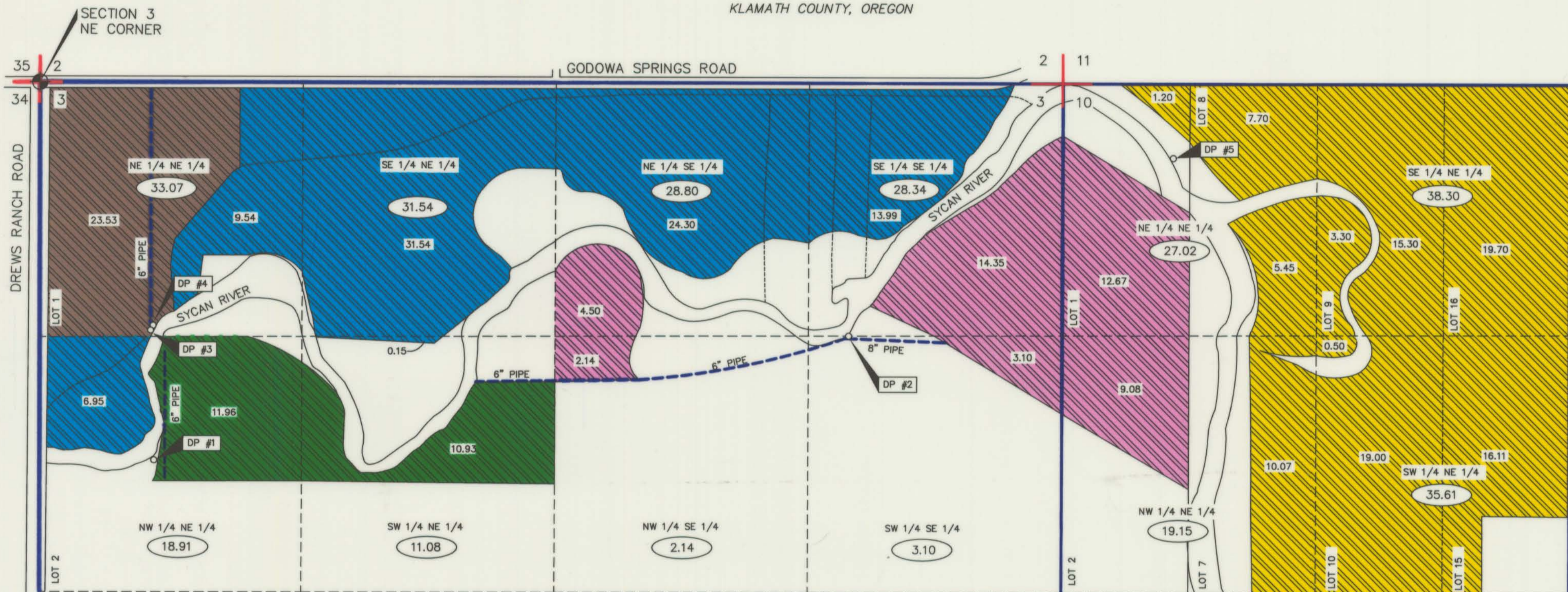


TABLE OF IRRIGATED AREAS SERVED BY DIVERSION POINTS

DP's	AREAS IRRIGATED	GOVERNMENT LOT #	IRRIGATED ACREAGE	1/4 1/4	SECTION	DP's	AREAS IRRIGATED	GOVERNMENT LOT #	IRRIGATED ACREAGE	1/4 1/4	SECTION
DP #1	Green	2	11.96	NW 1/4 NE 1/4	3	DP #4	Blue	2	6.95	NW 1/4 NE 1/4	3
		N/A	10.93	SW 1/4 NE 1/4	3			N/A	9.54	NE 1/4 NE 1/4	3
		TOTAL	22.89					N/A	0.15	SW 1/4 NE 1/4	3
DP #2	Pink	N/A	2.14	NW 1/4 SE 1/4	3	DP #5	Yellow	1	1.20	NE 1/4 NE 1/4	10
		N/A	4.50	NE 1/4 SE 1/4	3			7	10.07	NW 1/4 NE 1/4	10
		N/A	3.10	SW 1/4 SE 1/4	3			8	13.15	NE 1/4 NE 1/4	10
		N/A	14.35	SE 1/4 SE 1/4	3			10	19.50	SW 1/4 NE 1/4	10
		2	9.08	NW 1/4 NE 1/4	10			9	18.60	SE 1/4 NE 1/4	10
		1	12.67	NE 1/4 NE 1/4	10			15	16.11	SW 1/4 NE 1/4	10
TOTAL	45.84			TOTAL	98.33						
DP #3	Brown	1	23.53	NE 1/4 NE 1/4	3	TOTAL	98.33				
		TOTAL	23.53								

RECEIVED
DEC 27 2006
WATER RESOURCES DEPT
SALEM, OREGON

TOTAL IRRIGATED = 277.06

TABLE OF IRRIGATED AREAS BY 1/4 1/4

SEC. 3 QUARTERS		SEC. 10 QUARTERS	
NENE	33.07	NENE	27.02
NWNE	18.91	NWNE	19.15
SWNE	11.08	SWNE	35.61
SENE	31.54	SENE	38.30
NESE	28.80	TOTAL SEC. 10 =	120.08
NWSE	2.14	TOTAL IRRIGATED =	277.06
SWSE	3.10		
SESE	28.34		
TOTAL SEC. 3 =	156.98		

LEGEND

- EXISTING DITCH
-
- WALTON IRRIGATED LANDS
- DIVERSION POINT
- TOTAL IRRIGATED ACREAGE PER 1/4 1/4
- IRRIGATED ACREAGE
- DIVERSION POINT
- MONUMENT (NE CORNER SEC. 3)

NOTE: THIS MAP IS NOT INTENDED TO PROVIDE LEGAL DIMENSIONS OR LOCATIONS OF PROPERTY LINES.

Certified Water Right Examiner
#092
Douglas E. Adkins
November 19, 1987
STATE OF OREGON
EXPIRES 12/31/07

FROM	TO	AREAS IRRIGATED	BEARING	DISTANCE
NE CORNER SECTION 3	DP 1	Green	S73°06'18"W	2048.7'
	DP 2	Pink	S17°15'53"W	4397.2'
	DP 3	Brown	S65°47'51"W	1408.7'
	DP 4	Blue	S65°47'51"W	1408.7'
	DP 5	Yellow	S04°01'20"W	5909.6'

(DP 3 & DP 4 ARE ADJACENT TO EACH OTHER AND THE SAME TIE IS USED FOR BOTH.)

ADKINS
CONSULTING ENGINEERS, INC.
Engineers • Planners • Surveyors
2950 Shasta Way • Klamath Falls, Oregon 97603
(541) 884-4666 • FAX (541) 884-5335
COPYRIGHT © 2006