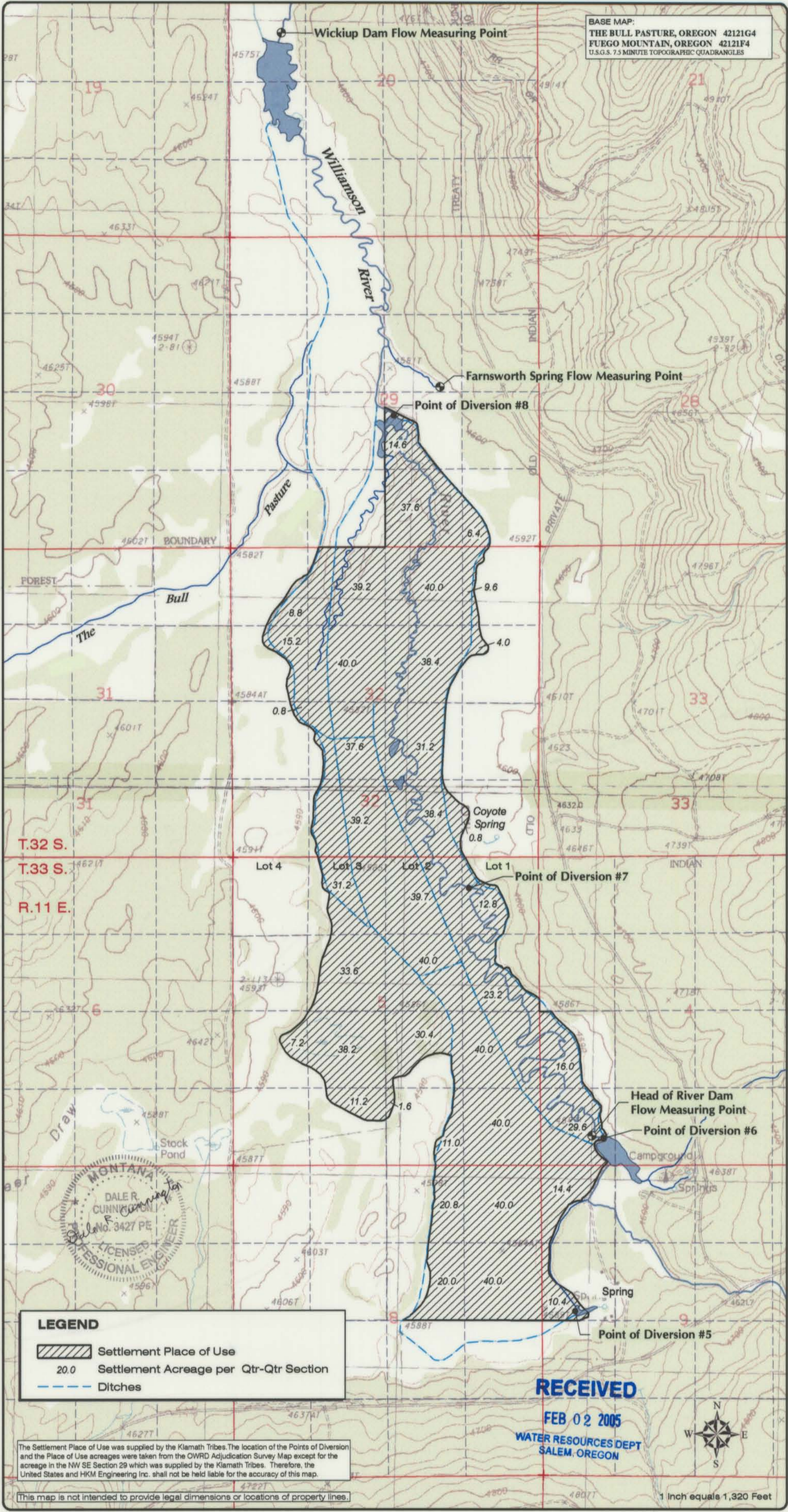


BASE MAP:
 THE BULL PASTURE, OREGON 42121G4
 FUEGO MOUNTAIN, OREGON 42121F4
 U.S.G.S. 7.5 MINUTE TOPOGRAPHIC QUADRANGLES



LEGEND

- Settlement Place of Use
- 20.0 Settlement Acreage per Qtr-Qtr Section
- Ditches

The Settlement Place of Use was supplied by the Klamath Tribes. The location of the Points of Diversion and the Place of Use acreages were taken from the OWRD Adjudication Survey Map except for the acreage in the NW SE Section 29 which was supplied by the Klamath Tribes. Therefore, the United States and HKM Engineering Inc. shall not be held liable for the accuracy of this map.

This map is not intended to provide legal dimensions or locations of property lines.

RECEIVED

FEB 02 2005

WATER RESOURCES DEPT
 SALEM, OREGON



1 inch equals 1,320 Feet

HKM ENGINEERING
 HKM Engineering Inc.
 Granite Tower Building
 222 N. 32nd St., Suite 700
 P.O. Box 31018
 Billings, MT 59107-1318
 406.664.4391, FAX 406.664.4398

**KLAMATH BASIN WATER RIGHTS ADJUDICATION
 CLAIM NO. 33 - SETTLEMENT
 CLAIMANTS: DAYTON O. HYDE, GERDA V. HYDE**

**EXHIBIT
 1**

Copyright © 2005 HKM Engineering Inc. All Rights Reserved. January 31, 2005
 N:\Views\CLAIM\CLAIM-33\Acres\Settlement\Claim33Settlement1401Updated.mxd BJ