

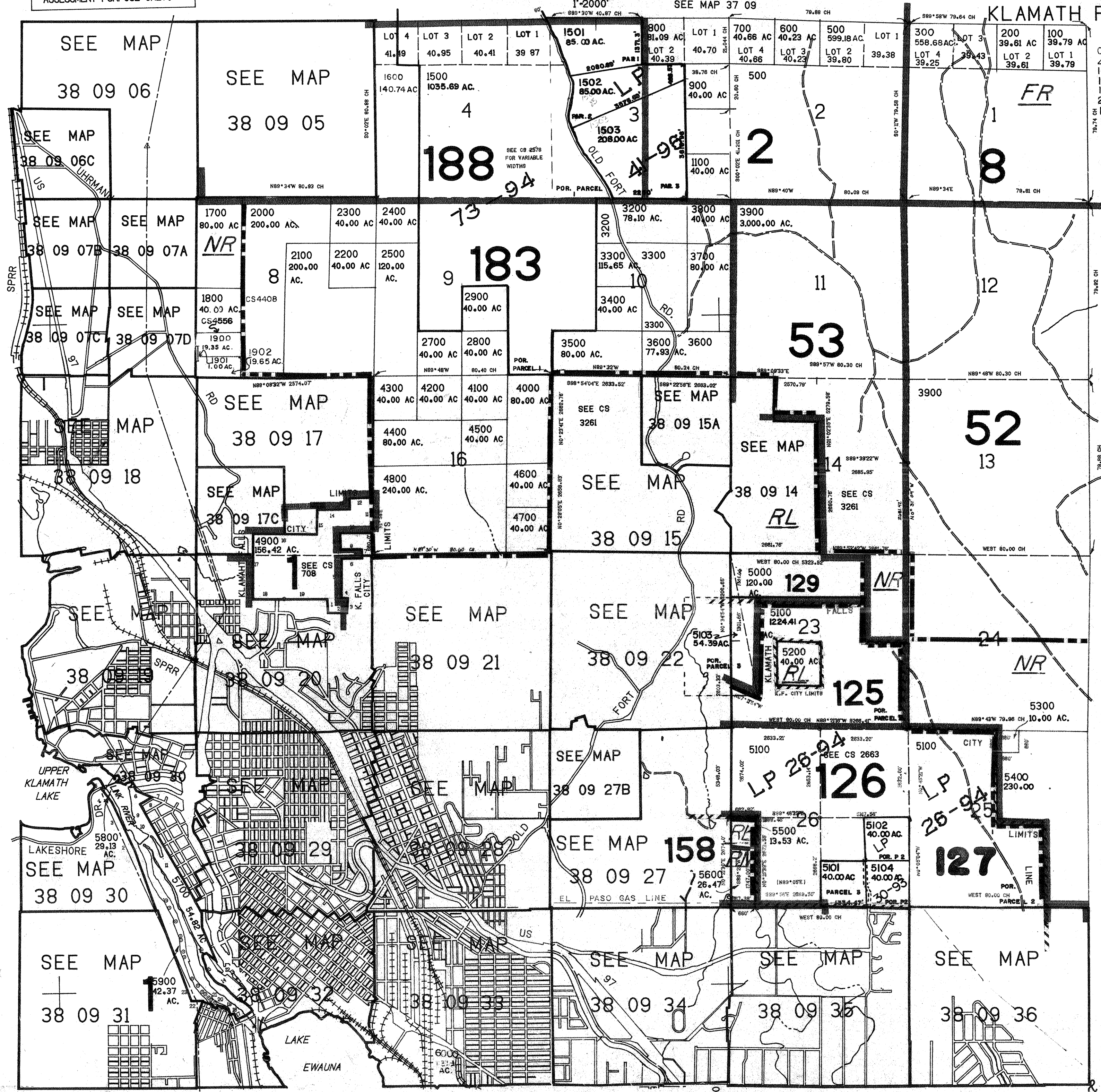
THIS MAP WAS PREPARED FOR ASSESSMENT PURPOSE ONLY.

T.38S. R.09E. W.M. 97 335 0155
KLAMATH COUNTY

EXHIBIT 11-2 & INDEX
KLAMATH FALLS

38 09

CANCELLED NO'S
400
1000
1200
1400
2600
1300
3000
3100



SEE MAP 38 08

PARCEL 4900
1. 80°45'30"W 400.0'
2. 88°47'E 544.5'
3. N0°45'30"E 400.0'
4. N89°47'W 161.26'
5. N0°15'E 1261.82'
6. EAST 600'
7. N0°35'E 217.8'
8. WEST 600'
9. N0°18'E 503.28'
10. EAST 933.01'
11. N1°50'E 390.58'
12. EAST 878.0'
13. NORTH 330.0'
14. EAST 990.0'
15. NORTH 860.0'
16. WEST 1040.0'
17. S0°52'W 1853.13'
18. S88°10'E 951.47'
19. S88°23'30"E 1317.53'

SEE MAP 38 10

PARCEL 5700, 5800 & 5900
1. N20°07'30"W 4798.82'
2. N27°04'W 598.47'
3. N25°10'W 1002.55'
4. N35°25'W 509.90'
5. S4. HWY NO. 42
6. CALIFORNIA AVE.
7. CONTRA LOMA ST.
8. BLANKO ST.
9. BUFF ST.
10. COUNCIL ST.
11. W4. BLKS 130, 139, 143, 146, 148, 150.
12. S. COR BLK 151
13. S22°35'W
14. NORTH END CONSERVATION AREA
15. N41°E 1004' FR
16. W/4 COR SEC 32
17. N22°12'W
18. S75°12'W
19. S63°45'W 207.4'
20. W/4 LINE W/4
21. W/4 LOT 2 BLK 2
22. WEST LARKVILLE
23. HILL ST
24. CHASE ST
25. N0°2'W
26. N0°2'W
27. N0°2'W
28. N0°2'W
29. N0°2'W
30. N0°2'W
31. N0°2'W
32. N0°2'W
33. N0°2'W
34. N0°2'W

ENTERPRISE IRRIGATION
Map 71

SEE MAP 39 09

97 335 0155

38 09 & INDEX
KLAMATH FALLS