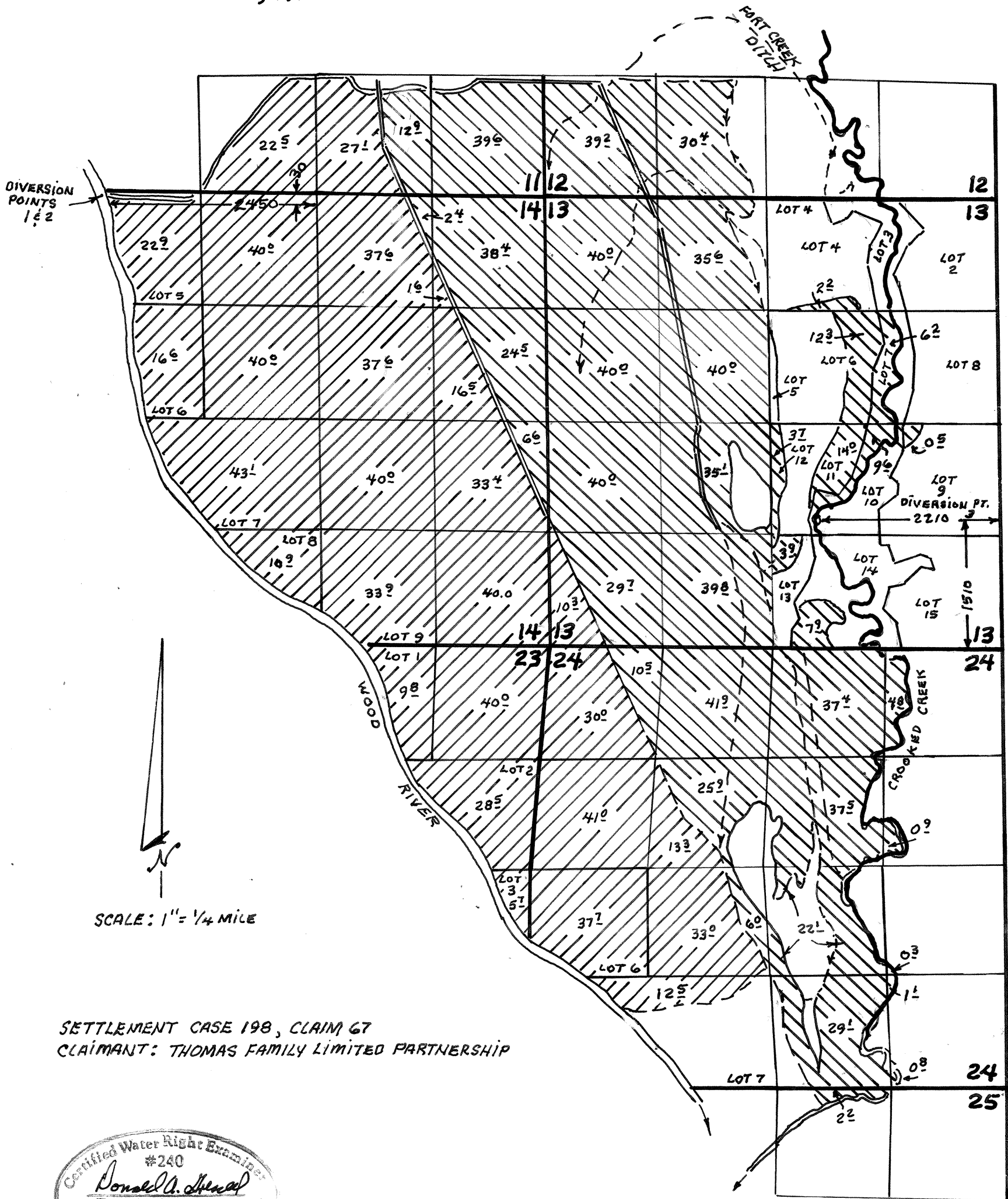


MAP SHOWING PLACE OF USE OF WATER RIGHTS  
PER SETTLEMENT OF KLAMATH ADJUDICATION

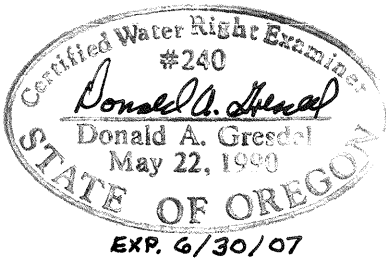
CLAIM 67

T34S R7½E, W.M. EAST OF WOOD RIVER



SCALE: 1" = ¼ MILE

SETTLEMENT CASE 198, CLAIM 67  
CLAIMANT: THOMAS FAMILY LIMITED PARTNERSHIP



LEGEND



DENOTES LAND IRRIGATED FROM WOOD RIVER FROM  
DIVERSION POINTS 1 & 2



DENOTES LAND IRRIGATED FROM CROOKED CREEK FROM  
DIVERSION POINT 3.

RECEIVED

FEB 23 2006

RECEIVED  
FEB 23 2006