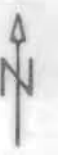


1" = 200'

all water rights identified on this map are primary water rights.

This map was prepared for assessment purpose only.



SEE MAP 36 5 16-43

SEE MAP 36 5 16-44

NW 1/4 NE 1/4  
TOTAL LOG WETTING = 6 3/4 AC

TOTAL POND AC 0 25 AC

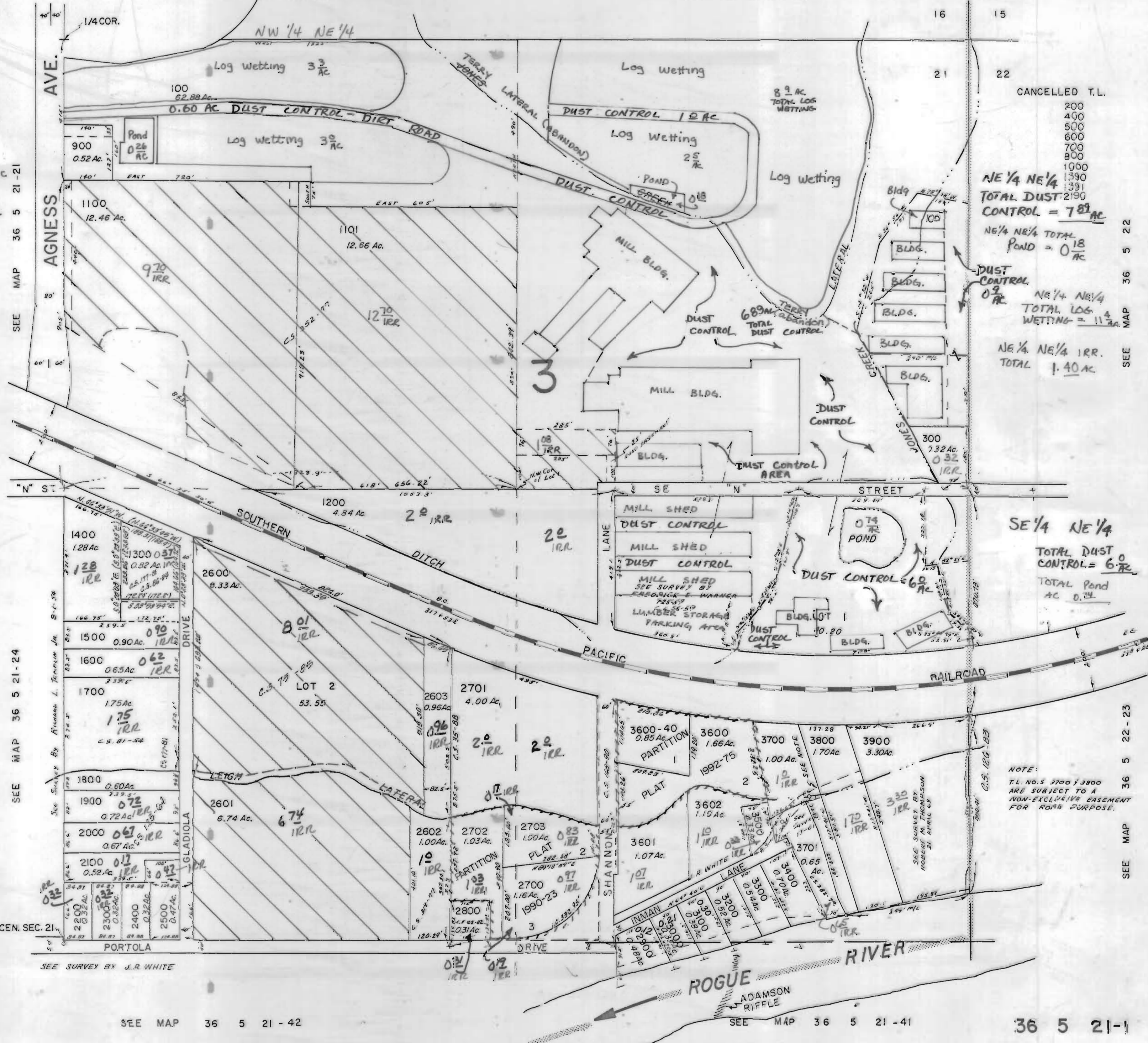
Total IRR AC 22 40

CANCELLED T.L.

200
400
500
600
700
800
1000
1390
1391
2190
NE 1/4 NE 1/4 TOTAL DUST CONTROL = 7 8 1/2 AC
NE 1/4 NE 1/4 TOTAL POND = 0 18 AC

NE 1/4 NE 1/4 TOTAL LOG WETTING = 11 3/4 AC

NE 1/4 NE 1/4 IRR. TOTAL 1.40 AC



SEE MAP 36 5 21-24

CEN. SEC. 21

SEE SURVEY BY J.R. WHITE

SEE MAP 36 5 21-42

SEE MAP 36 5 21-41

36 5 21-1

NOTE:  
T.L. NO. 5 3700 & 3800  
ARE SUBJECT TO A  
NON-EXCLUSIVE EASEMENT  
FOR ROAD PURPOSE.

SEE MAP 36 5 22

SEE MAP 36 5 22-23