

JOSEPHINE COUNTY

1"=100'

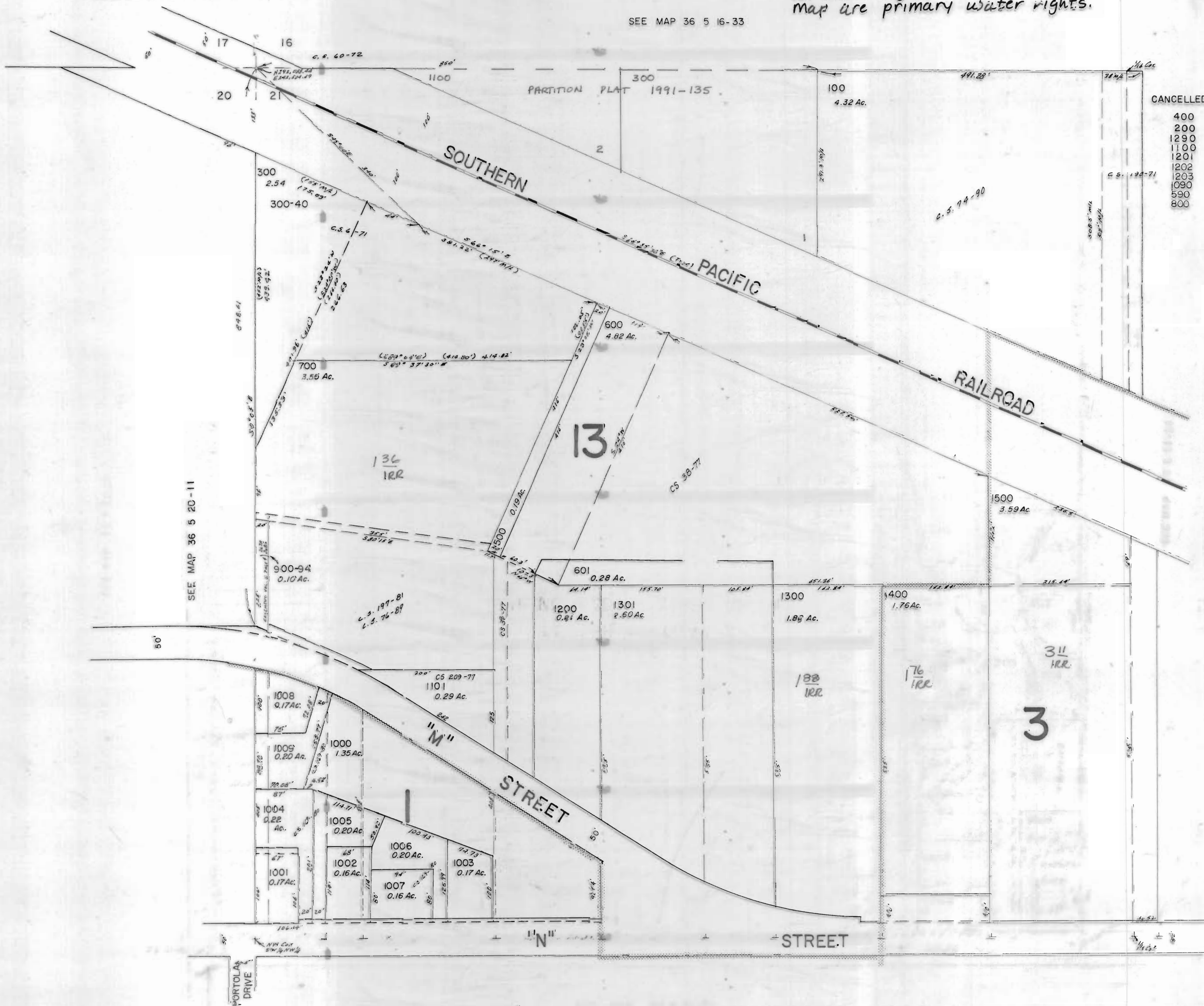
3111 PETITION

all water rights identified on this map are primary water rights.

SEE MAP 36 5 16-33

This map was prepared for assessment purpose only.

- CANCELLED T.L.
- 400
 - 200
 - 1290
 - 1100
 - 1201
 - 1202
 - 1203
 - 1090
 - 590
 - 800



SEE MAP 36 5 20-11

SEE MAP 36 5 21-21

SEE MAP 36 5 21-23