

JOSEPHINE COUNTY

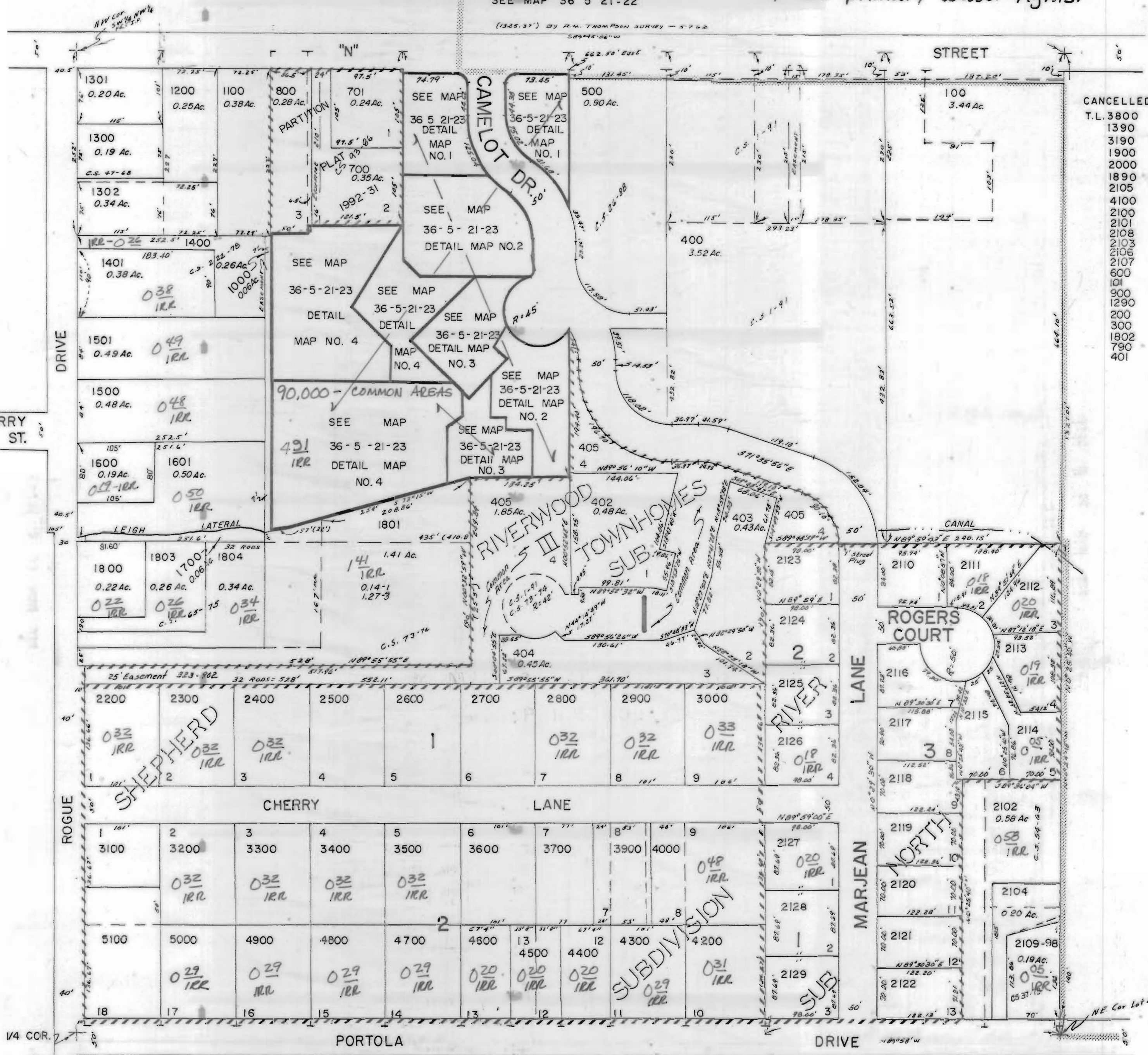
1" = 100'

3111 PETITION

This map was prepared for assessment purpose only.

all water rights identified on this map are primary water rights.

SEE MAP 36 5 21-22



- CANCELLED
- T.L. 3800
- 1390
- 1900
- 2000
- 1890
- 2105
- 4100
- 2100
- 2101
- 2108
- 2103
- 2106
- 2107
- 600
- 101
- 900
- 1290
- 200
- 300
- 1802
- 790
- 401

SEE MAP 36 5 20-14

SEE MAP 36 5 21-24

SEE MAP 36 5 21-32