

NW 1/4 SW 1/4 SEC 21 T36S R5W W.M. JOSEPHINE COUNTY

3111 PETITION

36 5 21-32 GRANTS PASS

This map was prepared for assessment purpose only.

1" = 100'

SEE MAP 36 5 21-23

CANCELLED

3500  
4290  
4400  
1702

1704  
3001  
4201  
2400  
1705  
301

GPID SUPP

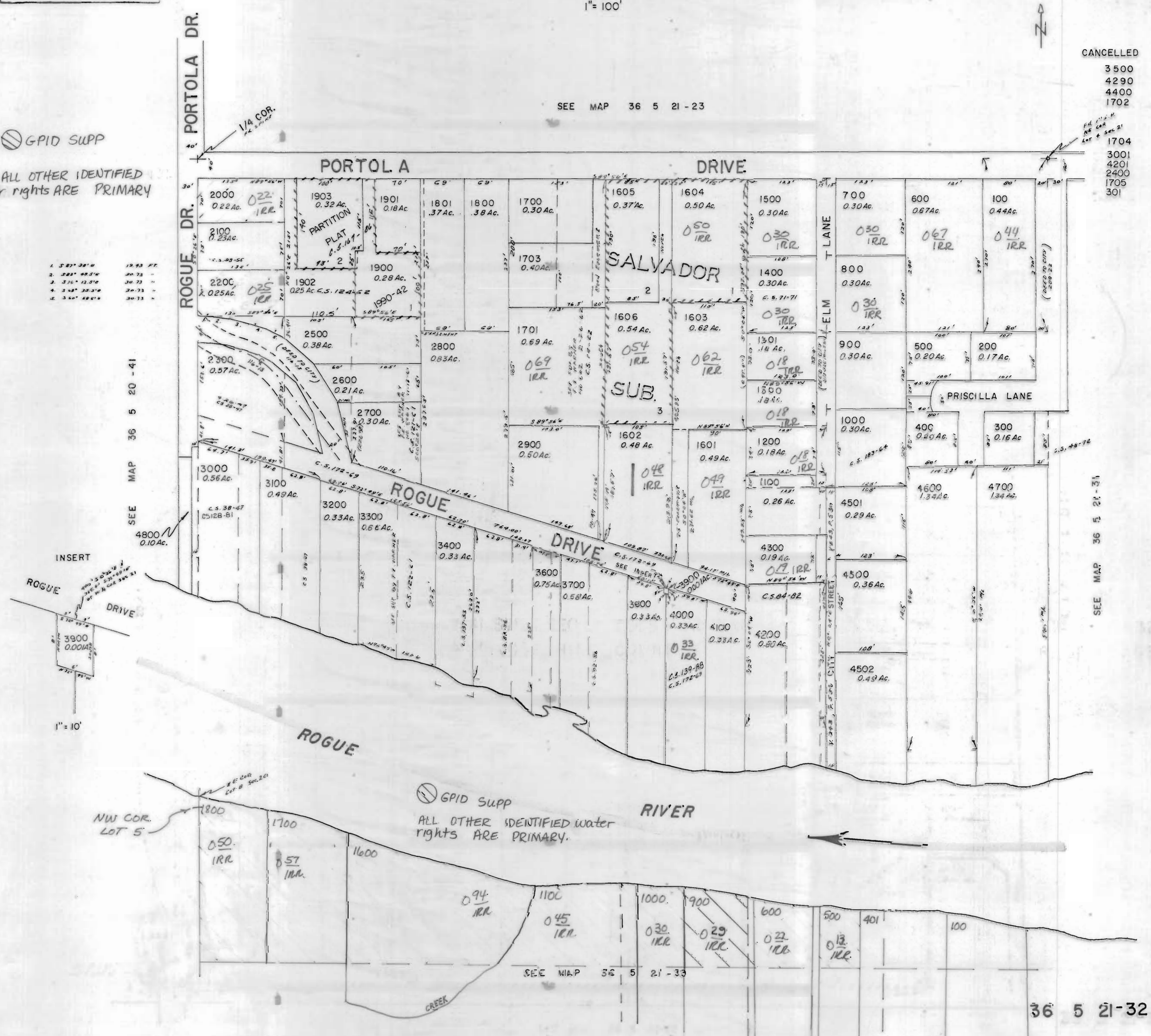
ALL OTHER IDENTIFIED water rights ARE PRIMARY

- 1. 5 27' 34" W 13 73' E
- 2. 2 21' 48.5" W 30 73' E
- 3. 3 1' 12.5" W 30 73' E
- 4. 3 48' 33.5" W 30 73' E
- 5. 3 50' 28.5" W 30 73' E

SEE MAP 36 5 20-41

1" = 10'

SEE MAP 36 5 21-31



SEE MAP 36 5 21-33

36 5 21-32