

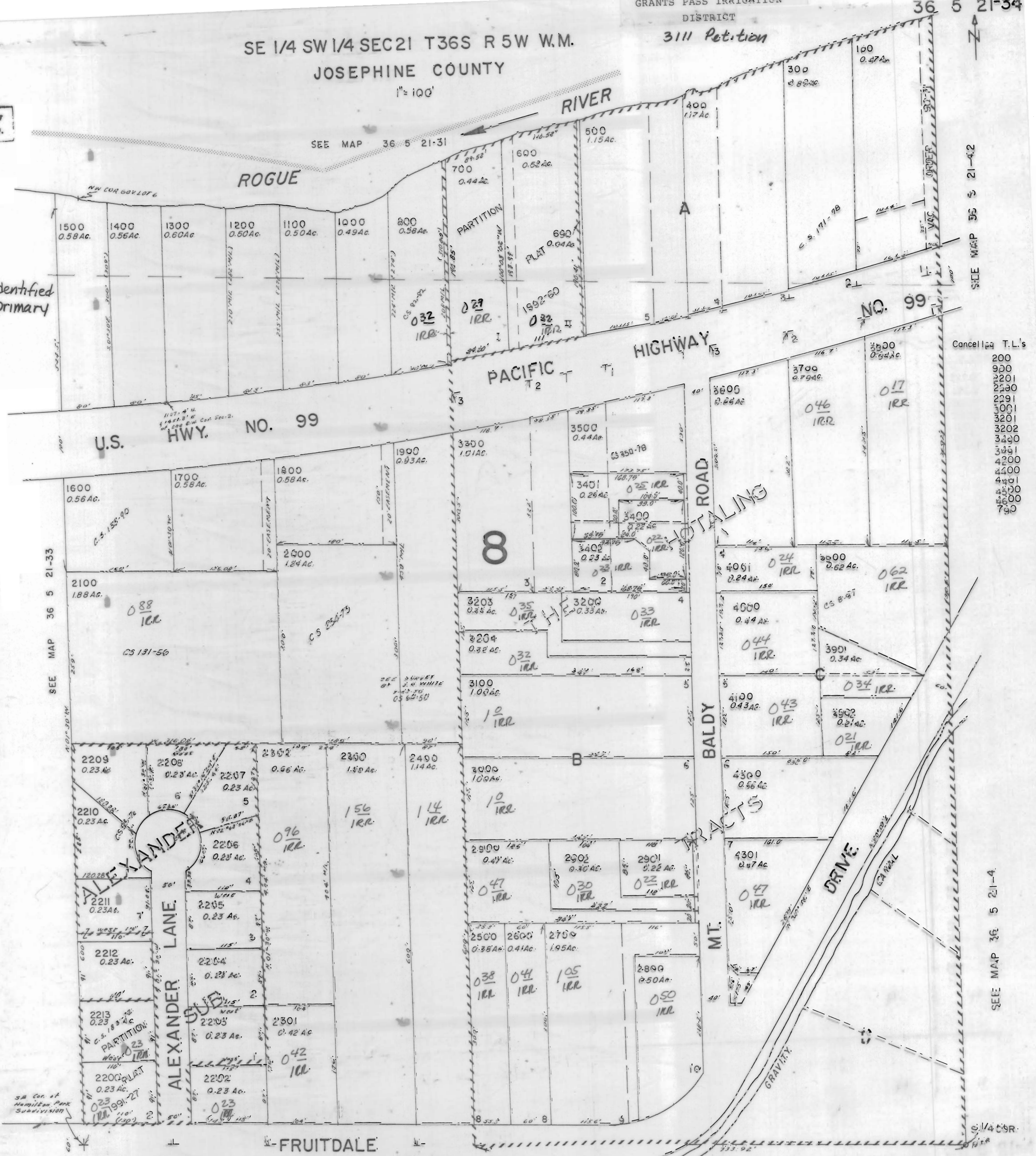
SE 1/4 SW 1/4 SEC 21 T36S R 5W W.M.  
JOSEPHINE COUNTY

1" = 100'

3111 Petition

This map was prepared for assessment purpose only.

all water rights identified on this map are primary water rights.



- Cancelled T.L.'s
- 200
  - 900
  - 2201
  - 2290
  - 2291
  - 3001
  - 3201
  - 3202
  - 3400
  - 3401
  - 4200
  - 4400
  - 4401
  - 4500
  - 4600
  - 790

SEE MAP 36 5 21-4

SE 1/4 SW 1/4 SEC 21 T 36 S R 5 W W.M.  
JOSEPHINE COUNTY

GRANTS PASS IRRIGATION DISTRICT

3111 Petition

36 5 21-34

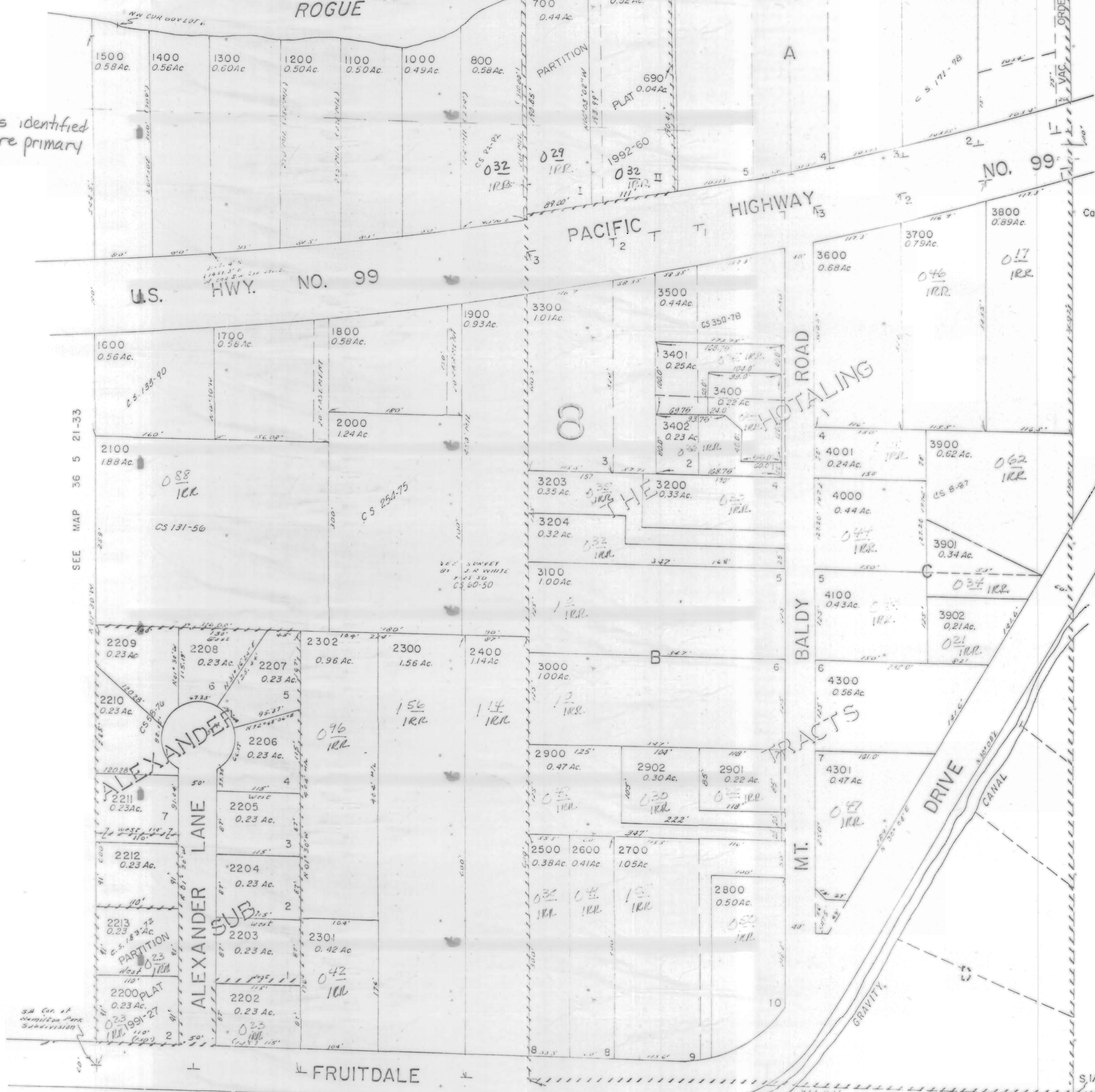
1" = 100'

This map was prepared for assessment purpose only.

SEE MAP 36 5 21-31

ROGUE RIVER

RIVER



all water rights identified on this map are primary water rights.

- Cancelled T.L.'s
- 200
  - 900
  - 2201
  - 2290
  - 2291
  - 3001
  - 3201
  - 3202
  - 3490
  - 3491
  - 4200
  - 4400
  - 4401
  - 4500
  - 4600
  - 790

SEE MAP 36 5 21-33

SEE MAP 36 5 21-4

SEE MAP 36 5 21-42

S 1/4 COR.