

JOSEPHINE COUNTY

3111 PETITION

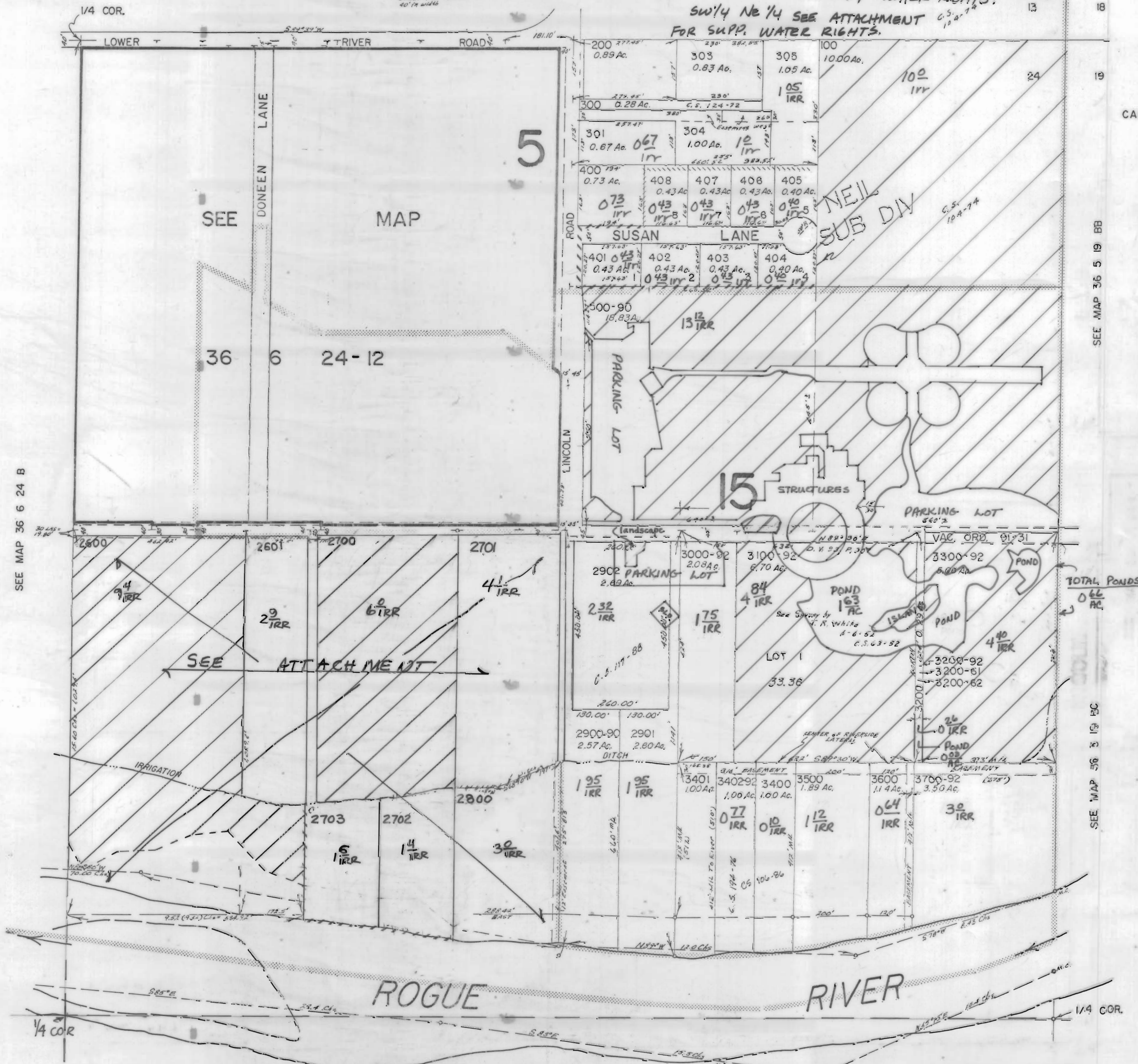
1" = 200'

This map was prepared for assessment purposes only.

ALL WATER RIGHTS IDENTIFIED ON THIS MAP ARE PRIMARY WATER RIGHTS. SW 1/4 NE 1/4 SEE ATTACHMENT FOR SUPP. WATER RIGHTS.

NOTE: Srv. map indicates Lower River Road as 40' in width

SEE MAP 36 6 13 D



CANCELLED T.L.

- 2791
- 2300
- 2301
- 2790
- 390
- 302
- 3200-63
- 2792
- 2690
- 1701
- 600
- 700
- 850
- 801
- 802
- 900
- 1000
- 1100
- 1200
- 1300
- 1400
- 1500
- 1600
- 1700
- 1702
- 1703
- 1704
- 1705
- 1706
- 1707
- 1708
- 1800
- 1900
- 2000
- 2100
- 2200
- 2201
- 2400
- 2500
- 2501
- 2502
- 2503
- 2701
- 2702
- 2703
- 2704
- 2705
- 2706

SEE MAP 36 6 24 B

SEE MAP 36 5 19 BB

SEE MAP 36 6 19 BC

SEE MAP 36 6 24 1B

SEE MAP 36 6 24 1A

6 SEPT 03 RLH