

SW1/4 NE1/4 SEC. 24 T36S R6W W.M.

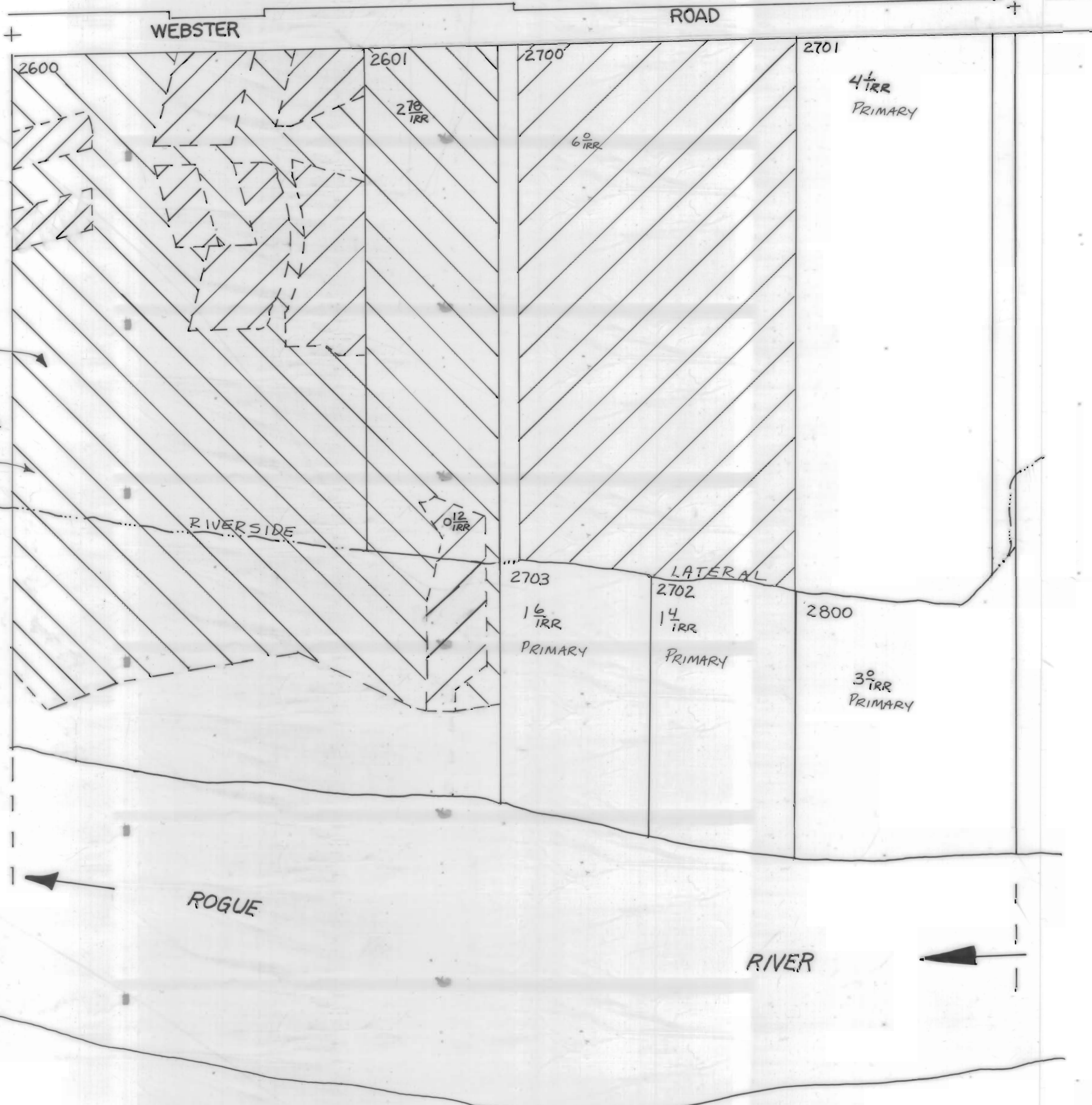
GRANTS PASS I.D.

36 6 24-13

JOSEPHINE COUNTY

3111 PETITION REVISED MAP

1"=100'



Tax Lot 2600

GPID PRIMARY
50650 2.10 AC IRR

GPID SUPP'L
7.30 AC IRR

RIVERSIDE

0 12/100 IRR

2703

1 6/100 IRR
PRIMARY

LATERAL

2702

1 4/100 IRR
PRIMARY

2800

3 0/100 IRR
PRIMARY

ROGUE

RIVER