

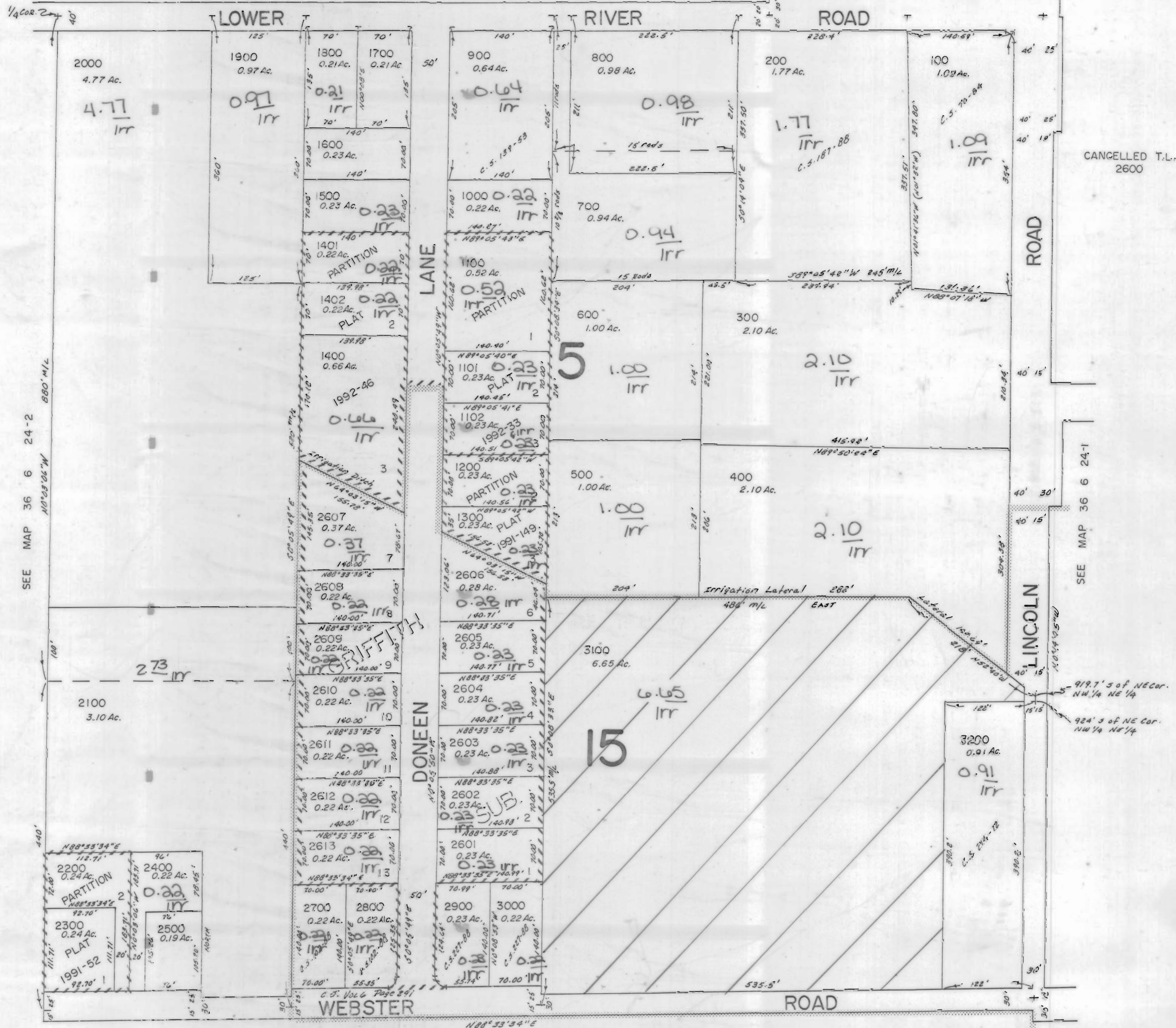
JOSEPHINE COUNTY

1" = 100'

3111 PETITION

ALL WATER RIGHTS IDENTIFIED ON THIS MAP ARE PRIMARY WATER RIGHTS.

SEE MAP 36 6 13-4
S89°05'42"W



CANCELLED T.L.
2600

SEE MAP 36 6 24-1

SEE MAP 36 6 24-2

SEE MAP 36 6 24-1

E. WEBSTER 4-B-192