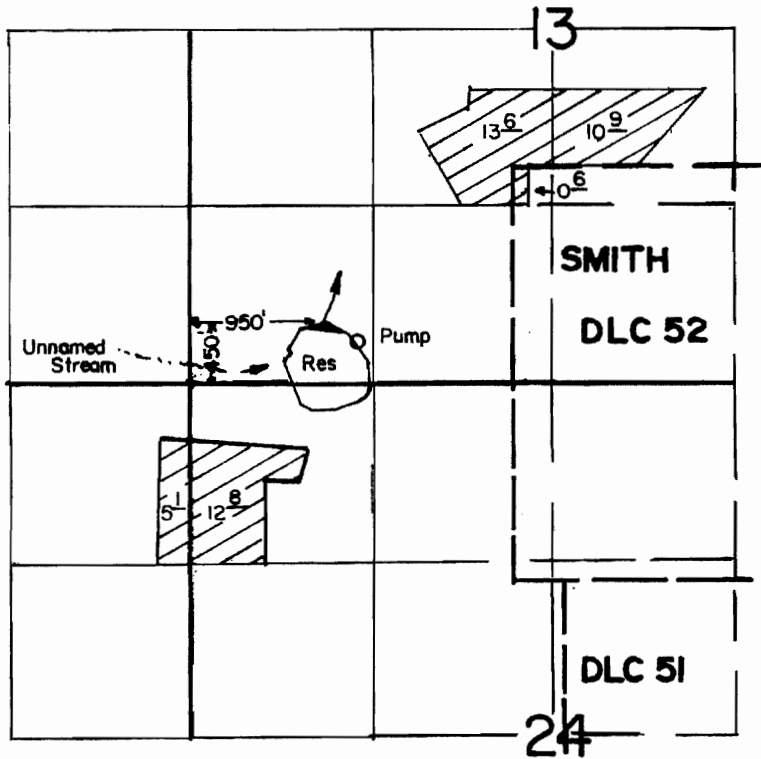


T. 6 S., R. 4 W., W. M.



SCALE: 1"=1320'

FINAL PROOF SURVEY
UNDER

R -68102 R -9965
Application No. 68103..... Permit No. 48639.....

IN NAME OF

.....**JAMES RIVER CORP.**.....

Surveyed JUNE 17... 1987... by B.W. BISHOP.....

RECEIVED

APR 24 2008

WATER RESOURCES DEPT
SALEM OREGON

IMPORTANT
This Map for Assessment
and Taxation Purposes

11 12 ONLY

SEC.13 T6S R4W WM
POLK COUNTY

See Map 6.4.12

Scale 1" = 400' → 880'

6.4.13

32-17

300
300M1
40.00 AC

100
215.85 AC



400
400M1
29.27 AC

200
52.20 AC

402
22.13 AC

32-11

404
98.92 AC



LOT 3
37.77 AC

LOT 2
30.64 AC

700
28.03 AC

LOT 1
30.64 AC

701
29.46 AC
PT. LOT 3
10.07 AC

S.W. CORNER
D. McDONALD
D.L.C. NO. 44

Canceled No.

N.W. CORNER
P.E. SMITH
D.L.C. NO. 45
201
202
403
500
501

703
19.56 AC

702
12.04 AC

LOT 5
18.71 AC

See map 6.3.18

S.W. CORNER
P.E. SMITH
D.L.C. NO. 45

600
171.11 AC

N.W. CORNER
J.P. SMITH
D.L.C. NO. 52

LOT 4
31.44 AC

608
6.64 AC

609
6.70 AC

610
610 A1
10.00 AC

605
2.42 AC

602
3.88 AC

604
2.41 AC

614
4.70 AC

603
2.49 AC

606
11.01 AC

EASEMENT

13 18

24

19
607
4.53 AC

601
2.00 AC

611
4.77 AC

612
2.86 AC

613
2.86 AC

WATER RESOURCES DEPT
SALEM OREGON

APR 24 2008

RECEIVED

See Map 6.4.24

See Map 6.3.19

6.4.13

08/02/06

#9

IMPORTANT
This Map for Assessment
and Taxation Purpose
ONLY

See Map 6.4.14

14 13

23 24

45-5

100
40.00 AC



Canceled No.

403
600

32-11

BETHEL
HEIGHTS

404
6.49 AC

401
4.62 AC

402
75.15 AC

400
5.83 AC

500
6.31 AC

200
40.25 AC

900
80.00 AC

32-17

See Map 6.4.22

701
39.15 AC

45-1

703
24.93 AC

801
93.03 AC

805
2.00 AC

802
65.00 AC

See Map 6.4.24

45-5

704
3.83 AC

804
2.00 AC

700
88.71 AC

702
0.53 AC

800
7.17 AC

803
3.83 AC

N.W.
CORNER
JOHN
PHILLIPS
D.L.L.
INC. CO

See Map 6.4.26

23 24

26 25

RECEIVED
APR 24 2008
WATER RESOURCES DEPT
SALEM OREGON

IMPORTANT
This Map for Assessment
and Taxation Purposes
ONLY

**SEC.24 T6S R4W WM
POLK COUNTY**

Scale 1" = ~~400'~~ 280'

6.4.24

14 13

23 24

200
40.00 AC



See Map 6.4.13

100
58.80 AC.

PT LOTS
32.40 AC

32-11

SW CORNER
J.P. SMITH
D.L.C. NO. 52

105
41.15 AC.
105 M1

N.W. CORNER
CLAIBOURN C. WALKER
D.L.C. NO. 51

601
5.16 AC

600
42.59 AC

401
89.20 AC

LOT 1
40.51 AC

101
6.02 AC

See Map 6.4.23

306
40.22 AC

32-17

LOT 2
42.00 AC

402
95.40 AC

400
4.55 AC

See map 6.3.19

303
8.96 AC

305
5.00 AC

304
5.22 AC

300
27.04 AC
LOT 4
29.88 AC

LOT 3
25.49 AC

301
1.50 AC

SW CORNER
CLAIBOURN C. W.
D.L.C. NO. 61

N.W. CORNER
W.B. WALKER
D.L.C. NO. 49

S.W. E. CORNER
CLAIBOURN C. WALKER
D.L.C. NO. 49

N.E. CORNER
JOHN PHILLIPS
D.L.C. NO. 50

See Map 6.4.25

23 24

26 25

24 19

25 30

08/02/06

RECEIVED
APR 24 2008
WATER RESOURCES DEPT
SALEM OREGON

Cancelled No.

103
104
500

6.4.24

WATER RIGHTS APPLICATION MAP

T6S, R4W, WM

TL 100 (6S 4 23)

TL 200 (6S 4 24)

TL 404 (6S 4 13)

POLK COUNTY, OREGON

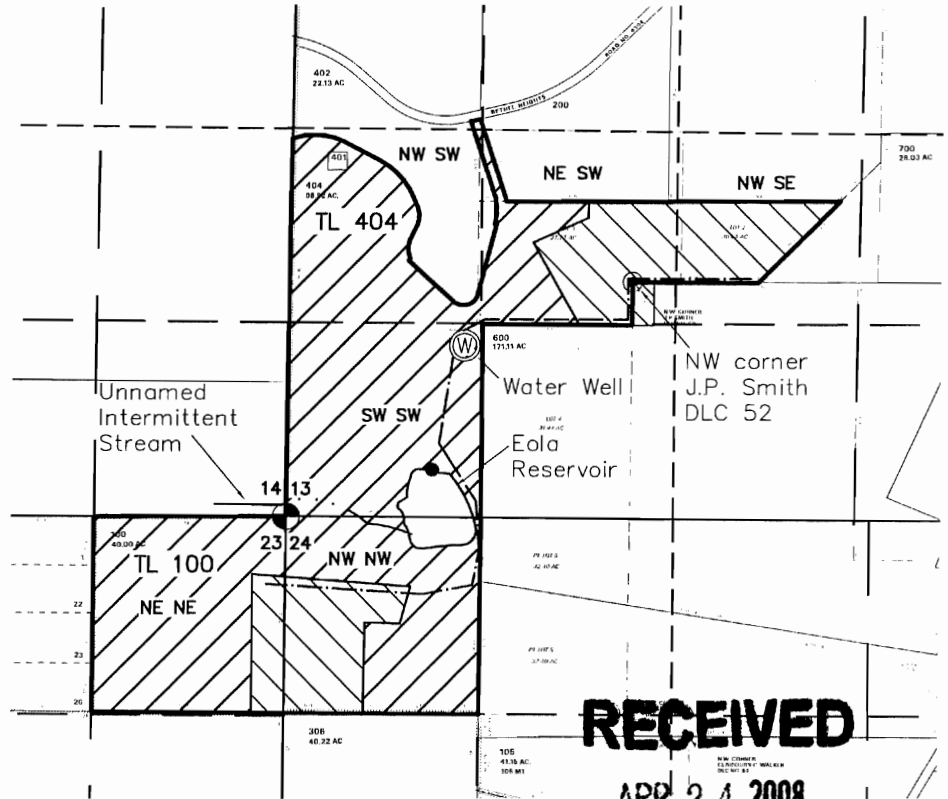
WILLAMETTE RIVER BASIN

PREPARED FOR:
VINEYARD HOLDINGS, LLC
P.O. BOX 280
DUNDEE OR 97115



IRRIGATED ACRES CERT. 62251 & 62252		
SEC. 13	NE SW	13.6 AC
	NE SW	0.6 AC
	NW SE	10.9 AC
	TOTAL - 25.1 AC	
SEC. 24	NW NW	12.8 AC
	TOTAL - 12.8 AC	
SEC. 23	NE NE	5.1 AC
	TOTAL - 5.1 AC	
TOTAL IRRIGATED AC 43.0		

NEW IRRIGATION ACREAGE		
SEC. 13	NW SW	21.5 AC
	NE SW	9.9 AC
	NW SE	10.7 AC
	SW SW	36.2 AC
	TOTAL - 78.3 AC	
SEC. 24	NW NW	25.3 AC
	TOTAL - 25.3 AC	
SEC. 23	NE NE	32.3 AC
	TOTAL - 32.3 AC	
PROPOSED IRRIGATION AC 135.9		
TOTAL IRRIGATION ACREAGE 178.9		



RECEIVED

APR 24 2008

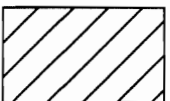
WATER RESOURCES DEPT
SALEM OREGON

● POINT OF DIVERSION FOR R9965 IS LOCATED 450' NORTH AND 950' EAST OF THE SW COR. OF S13

Ⓜ WATER WELL (POLK 50658) IS LOCATED 1180' NORTH AND 1230' EAST OF THE SW COR. OF S13



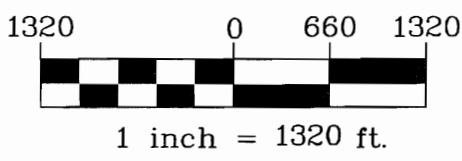
IRRIGATION AREAS - WATER RIGHT CERTIFICATES 62251 & 62252



PROPOSED IRRIGATION AREA: 135.9 ACRES

--- EXISTING MAIN IRRIGATION PIPES (5" & 4" DIA.)
[ADDITIONAL MAIN LINES NOT DESIGNED]

THIS MAP WAS PREPARED FOR THE PURPOSE OF IDENTIFYING THE LOCATION OF A WATER RIGHT ONLY AND IS NOT INTENDED TO PROVIDE LEGAL DIMENSIONS OR LOCATION OF PROPERTY OWNERSHIP LINES.



MAP BASE:
POLK COUNTY TAX MAPS 6.4.13,
6.4.23, & 6.4.24



Project: 307-2-142
Drawing: 3072142 A.dwg
By: CVB/WPK
Checked by: EAU
Date: 3-28-08