

THIS MAP WAS PREPARED FOR ASSESSMENT PURPOSE ONLY

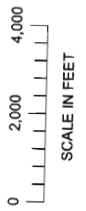
T.20S. R.35E. W.M. HARNEY COUNTY

Drewsey Wilbers

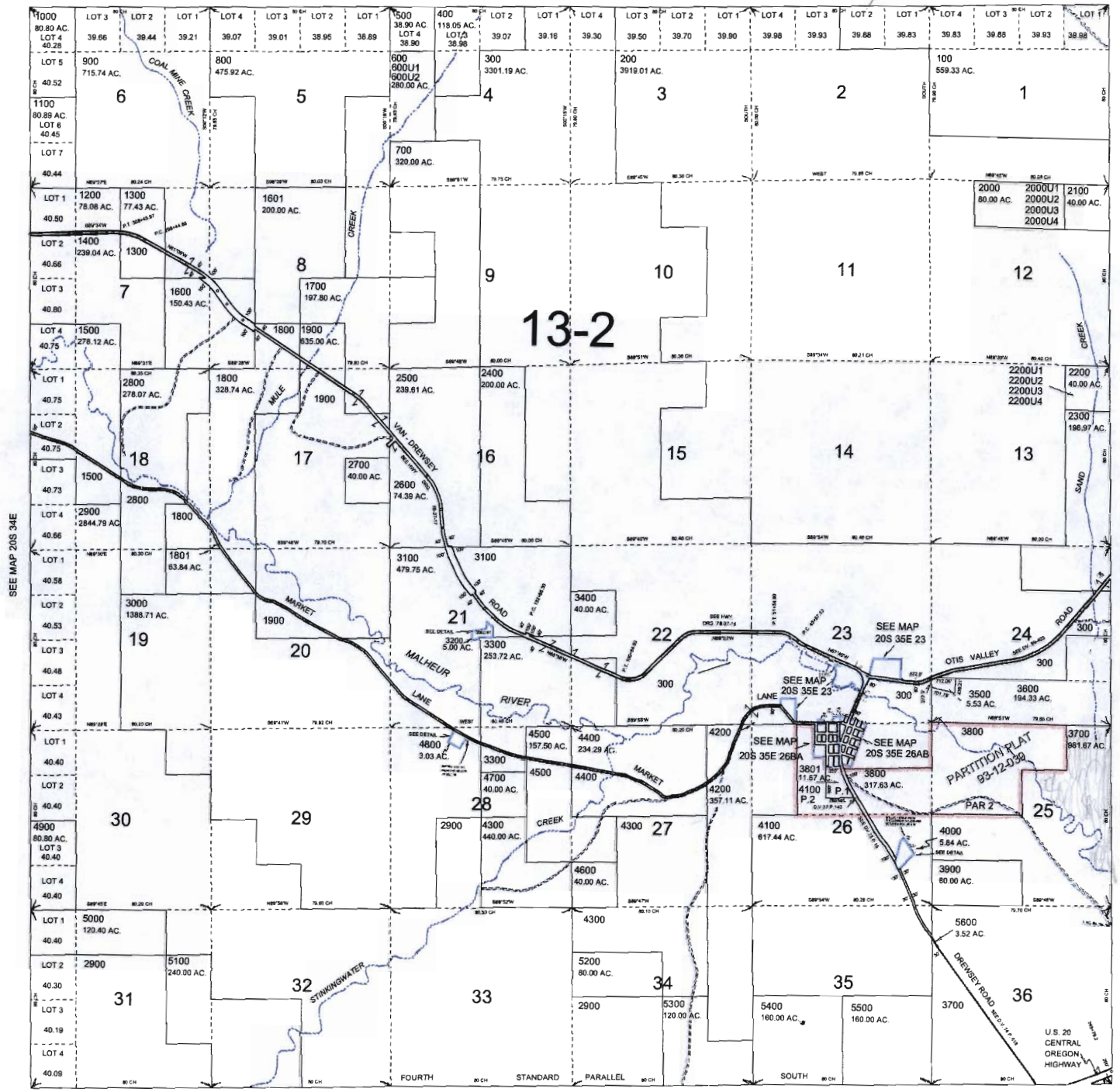
20S 35E
& INDEX

SEE MAP 19S 35E

CANCELLED NO.
301



RECEIVED
MAY 01 2008
WATER RESOURCES DEPT
SALEM, OREGON



SEE MAP 20S 34E

SEE MAP 20S 36E

SEE MAP 21S 35E

PRINTED ON
Mar 08, 2004
20S 35E
& INDEX

THIS MAP WAS PREPARED FOR ASSESSMENT PURPOSE ONLY

T.20S. R.36E. W.M.

HARNEY COUNTY

1" = 2000'

SEE MAP 19S 36E

20S 36E
& INDEX

CANCELLED NO.
300M1
500M1
500M2
1700M1
1700M2

RECEIVED

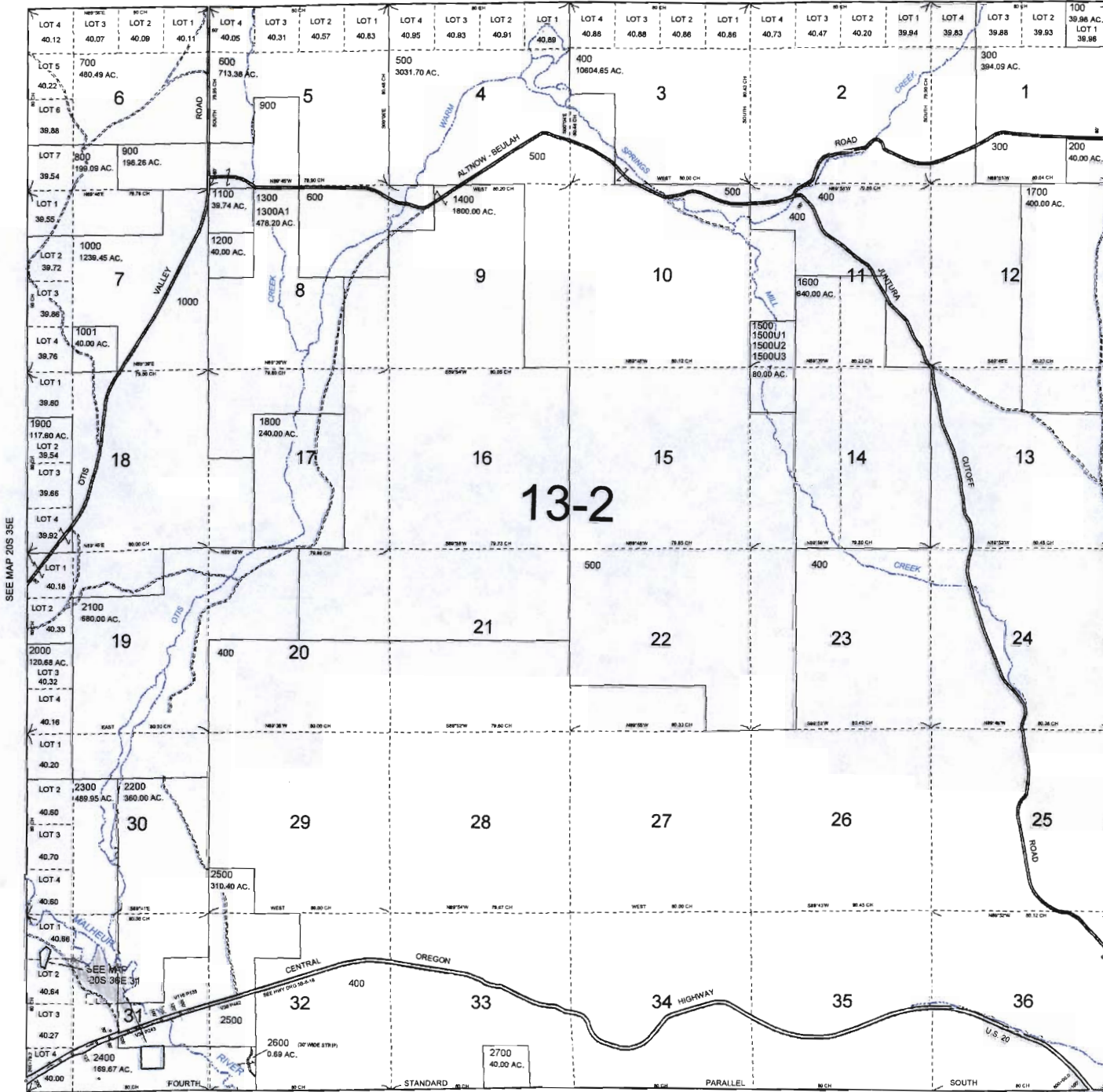
MAY 01 2008

WATER RESOURCES DEPT
SALEM, OREGON

COUNTY

T-21-S R-36-E
Sec 5
Sec 6

MALHEUR



SEE MAP 21S 36E

PRINTED ON
Jun 21, 2006
20S 36E
& INDEX

SECTION PLAT

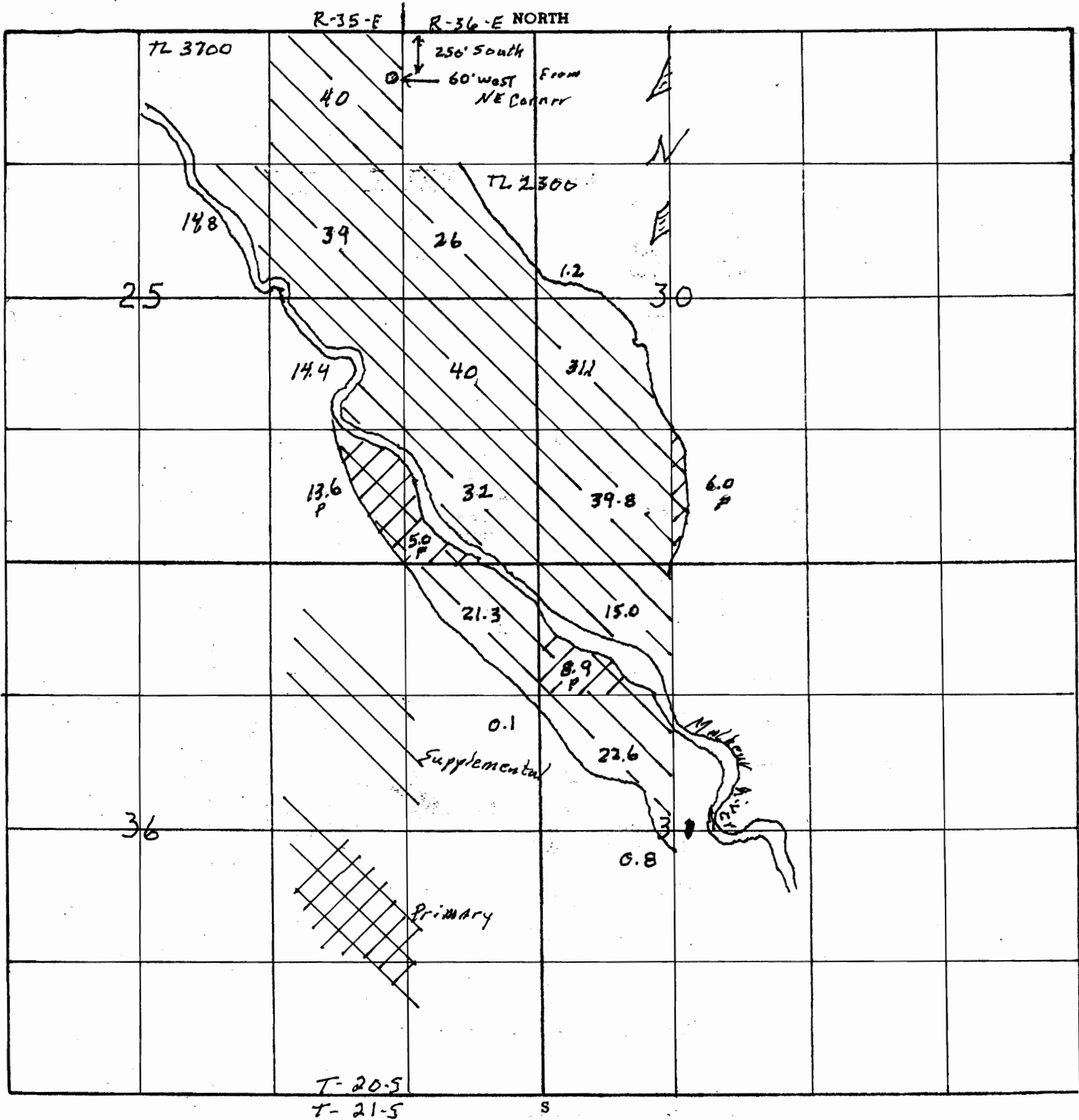
MAY 1 OF 2

25 ~ 36
Section 30-31-32

20-S
Township 20-S

35-E
Range 36-E

County of Harney State of OR



Remarks scale - 8" = 1 mile - 660' -

RECEIVED

MAY 01 2008

WATER RESOURCES DEPT
SALEM, OREGON

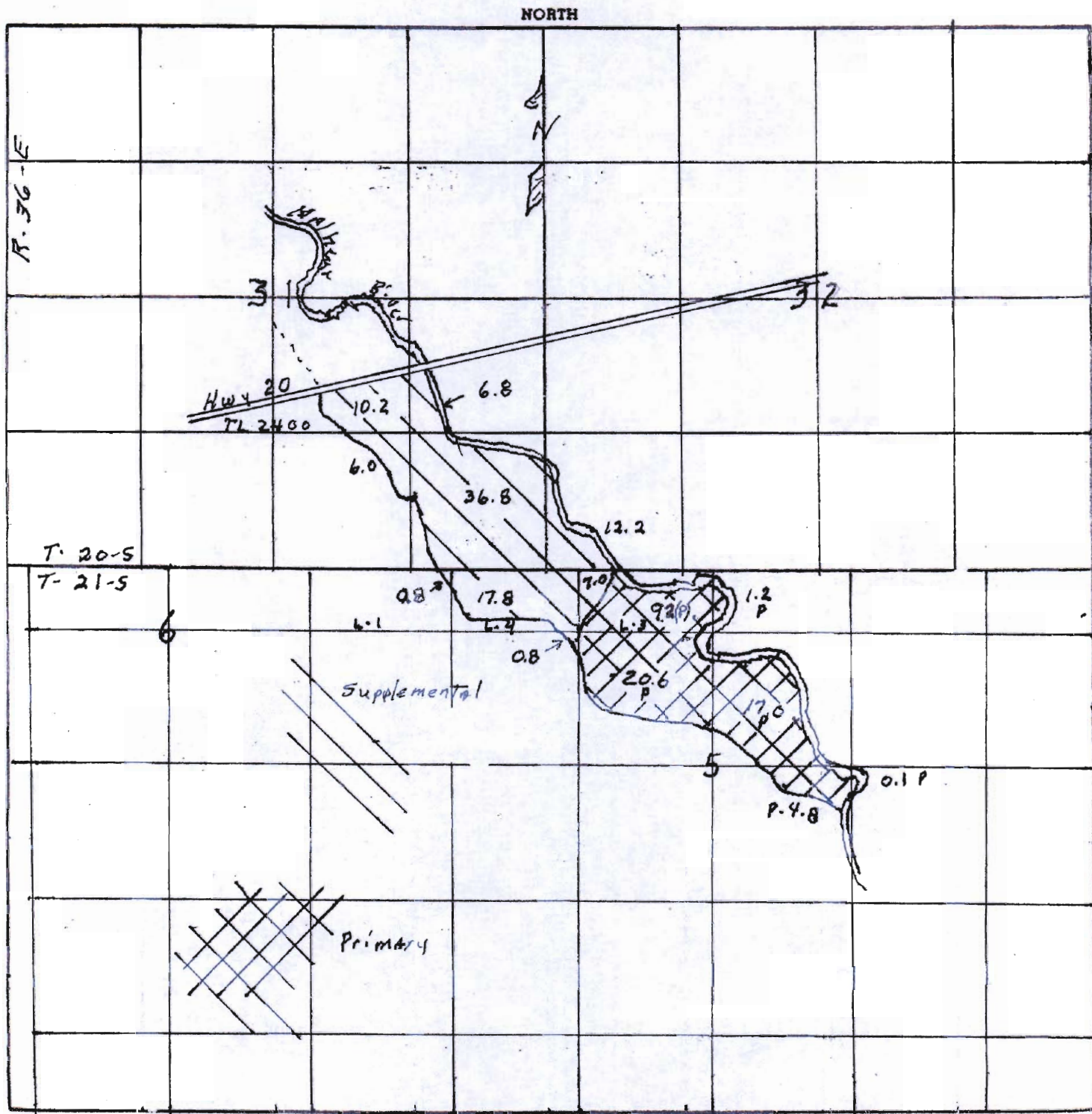
SECTION PLAT

Section 31-32
5-6

Township 20-5
21-5

Range 36-E
36-E

County of Harney State of OR

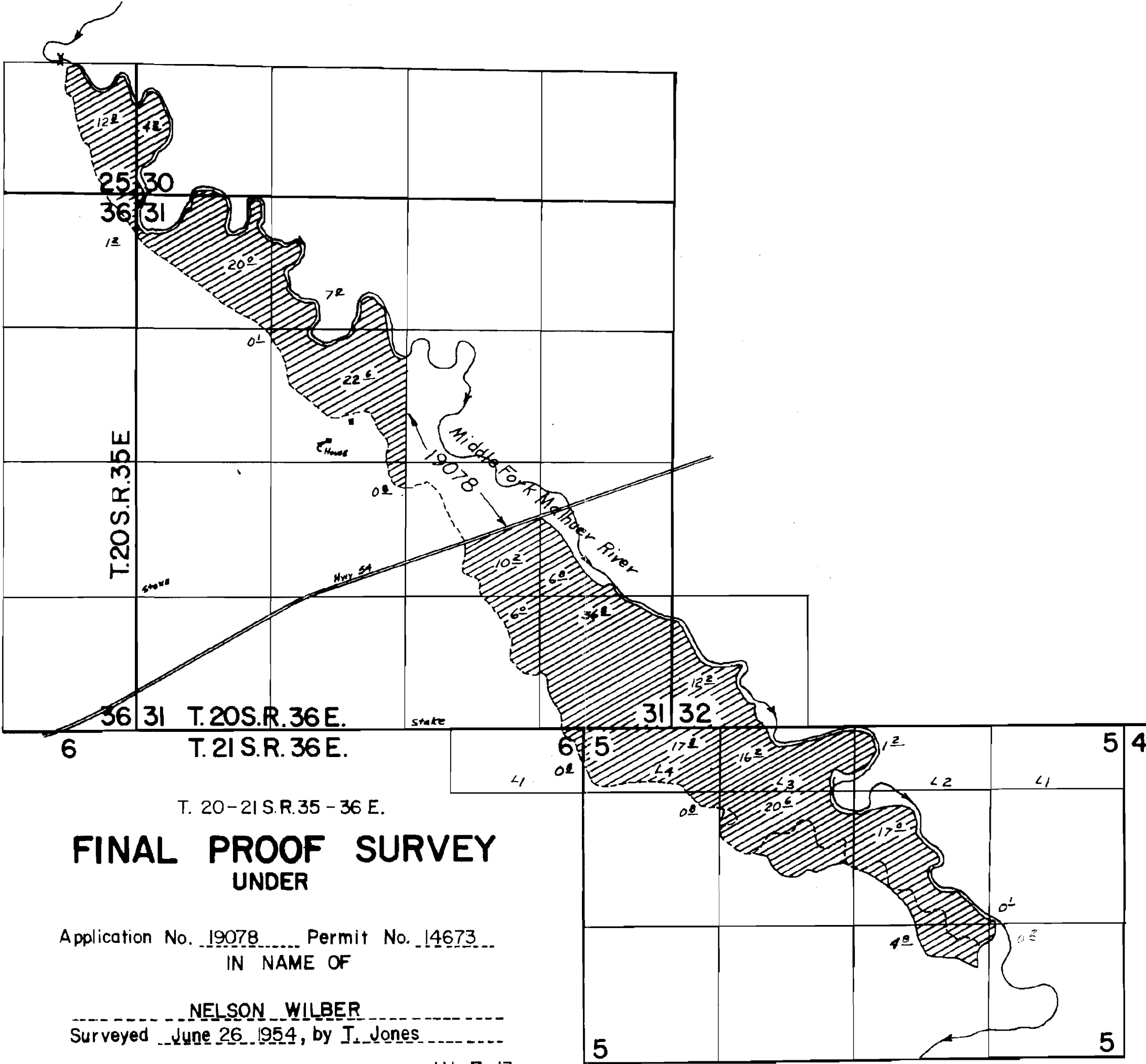


Remarks scale - 8" = 1 mile - 660' -

RECEIVED

MAY 01 2008

WATER RESOURCES DEPT
SALEM, OREGON



**FINAL PROOF SURVEY
UNDER**

Application No. 19078 Permit No. 14673
IN NAME OF

NELSON WILBER

Surveyed June 26, 1954, by T. Jones