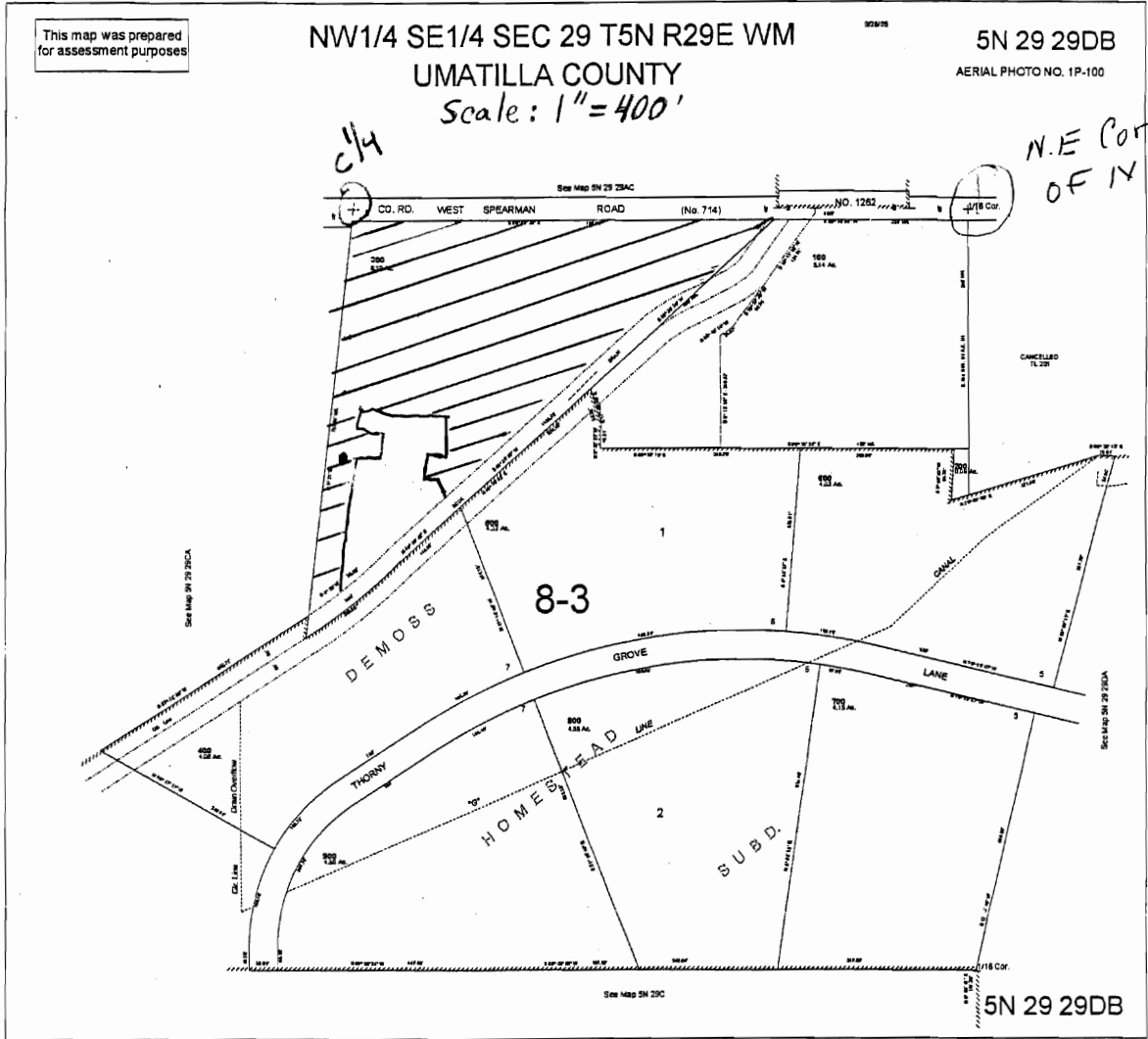




This map was prepared for assessment purposes

NW1/4 SE1/4 SEC 29 T5N R29E WM  
UMATILLA COUNTY  
Scale: 1" = 400'

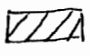
5N 29 29DB  
AERIAL PHOTO NO. 1P-100

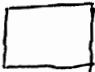


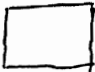
Map

N.W. 1/4 SE 1/4 SEC. 29  
T5N R29E WM

Key

5 AC. IRR. (NWSE TL 300) 

BIDGS + PARKING + DRAIN DITCH 

1.1 ac. not irr. 

WELL Location

522 So. + 1320' W From The  
N.E. Corner T.5N, R.29E. W.M.  
Sec. 29 NWSE. TAX LOT 300  
Umatilla Co. Basin 7

(•) Well Location

**RECEIVED**

MAY 12 2008

WATER RESOURCES DEPT  
SALEM, OREGON



**OREGON WATER RESOURCES  
DEPARTMENT & UMATILLA COUNTY  
WATERMASTERS OFFICE**

N.C. Region & Dist #5  
116 S.E. Dorion Ave.  
Pendleton, OR 97801

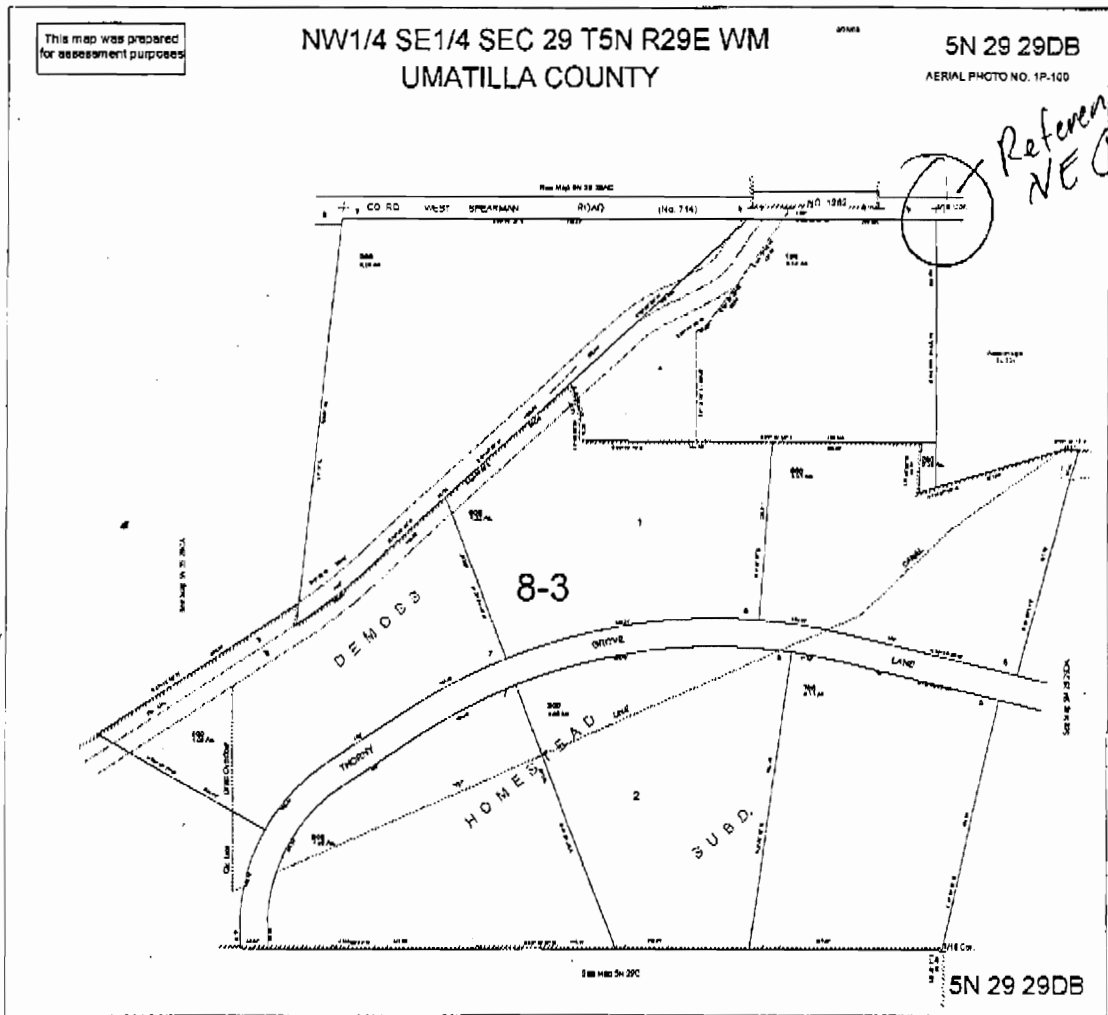
PH# (541) 278-5456  
FAX # (541) 278-0287

To: Herb Mosgar Date: 5/13/08  
From: Frank Dye  
Pages: 2 (INCLUDING COVER)

**Message:**

Just in case the reference to the well location  
was wrong on the appl. map - This  
should be correct. Thanks!

\* Robert & Chandra Walchli - applicants -



Well Location  
 522' So. & 1320' W  
 from the NE Corner  
 of the NW1/4 SE1/4 of  
 Sec. 29 T. 5N, R. 29E, W.M.  
 Umatilla Co. Basin 7