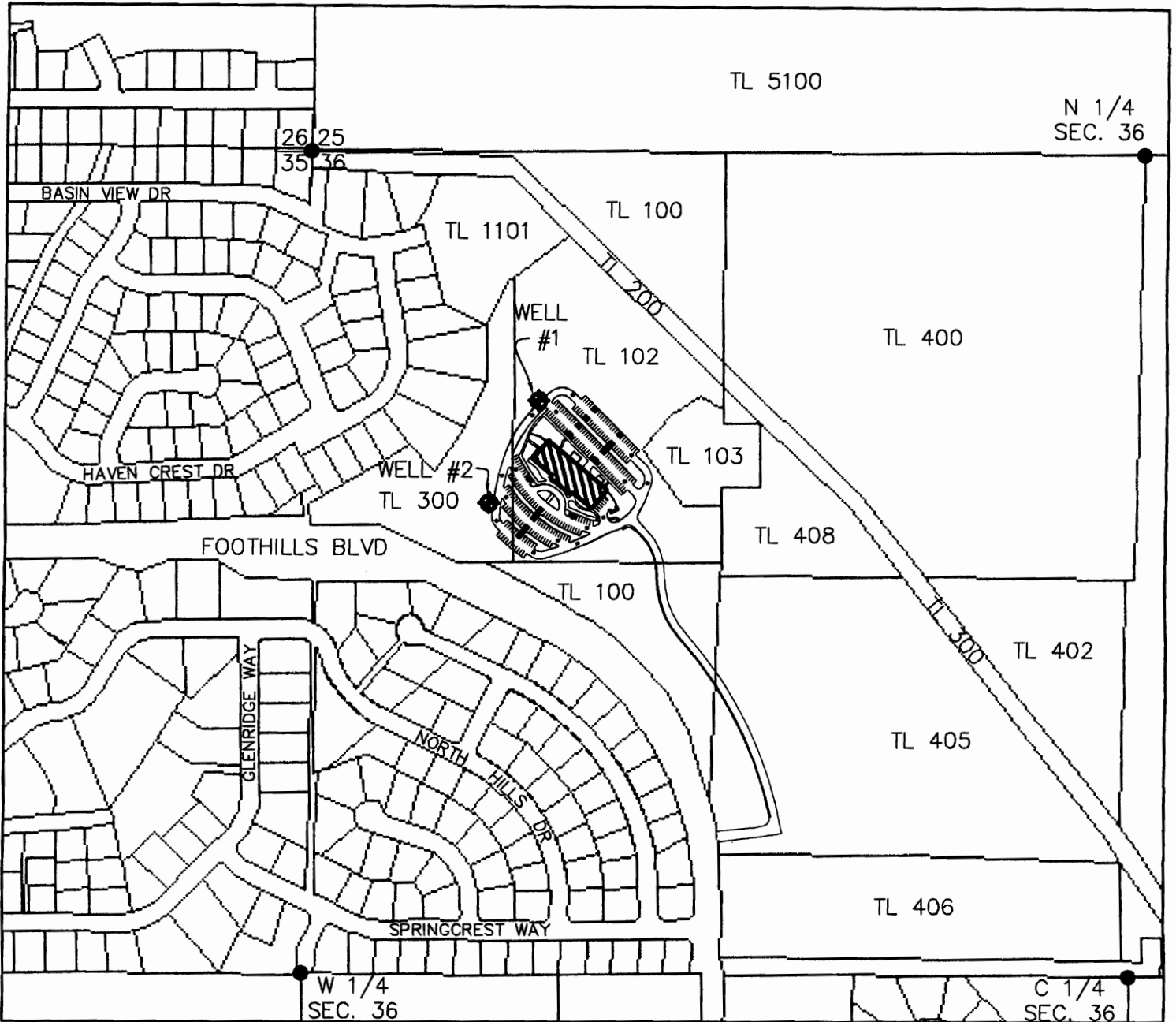




TOWNSHIP 38S, RANGE 9E., W.M.  
 NW 1/4 NW 1/4 SECTION 36  
 KLAMATH COUNTY  
 TL 102 & TL 300



MAP TO ACCOMPANY WATER RIGHT APPLICATION  
 FOR: INTERNATIONAL CHURCH OF THE FOURSQUARE.  
 OCTOBER 2007

 AREA OF USEAGE  
 (BUILDING)

WELL #1: (KLAM 56417)  
 LOCATED 820 ft SOUTH AND 760 ft  
 EAST OF THE NW CORNER OF SECTION 36.

LAT. = 42° 13' 34.503" N  
 LON. = 121° 42' 54.898" W (NAD83)

WELL #2: (KLAM 56340)  
 LOCATED 1160 ft SOUTH AND 600 ft  
 EAST OF THE NW CORNER OF SECTION 36.

LAT. = 42° 13' 31.092" N  
 LON. = 121° 42' 57.050" W (NAD83)



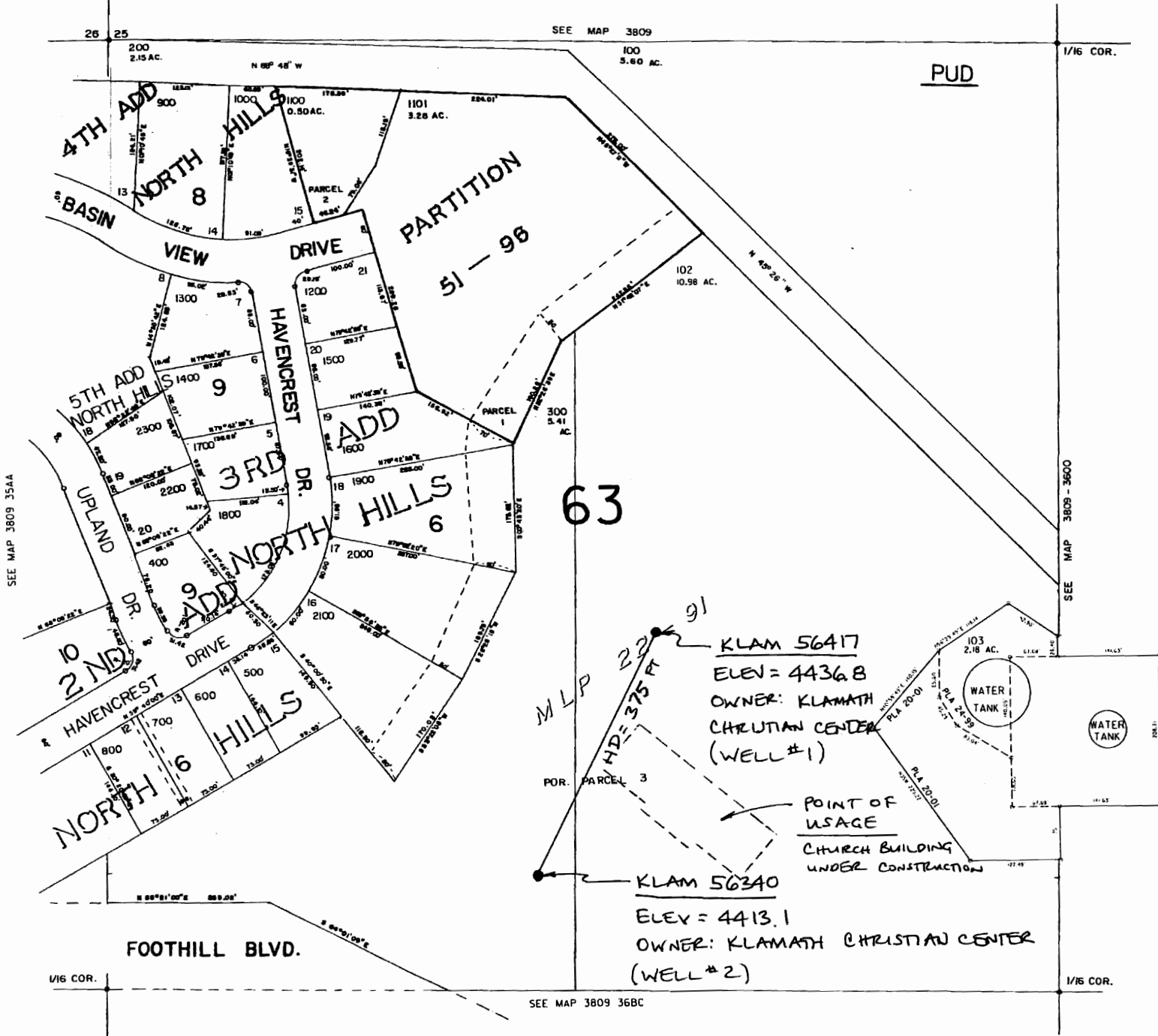
SCALE 1"=500'

THIS MAP WAS PREPARED FOR  
ASSESSMENT PURPOSE ONLY

NW1/4 NW1/4 SEC. 36 T.38S. R.09E. W.M.  
KLAMATH COUNTY

38 09 36BB  
KLAMATH FALLS

~~1" = 200'~~  
1" = 200'



38 09 36BB