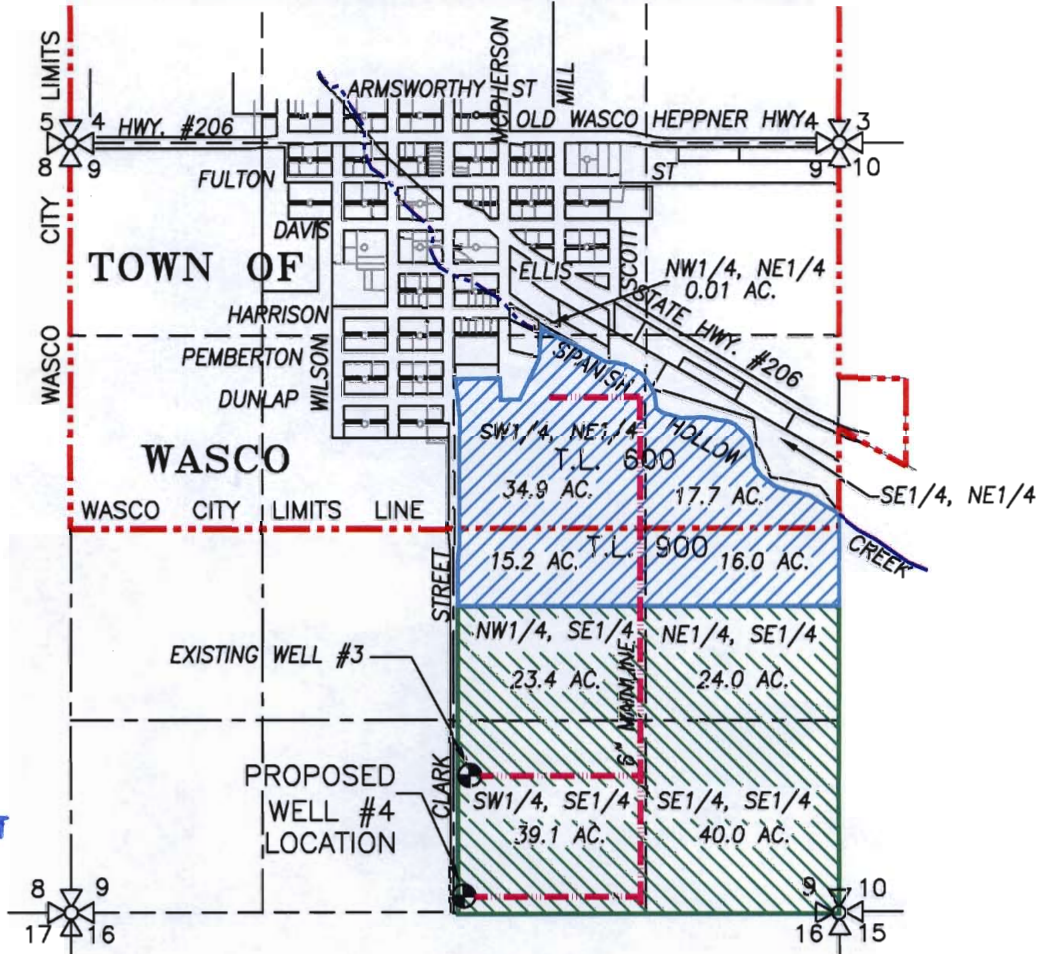


# SECTION 9, TWP.1 N. RANGE 17 E. W.M. SHERMAN COUNTY, OREGON

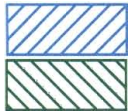


**RECEIVED**

JAN 18 2008

WATER RESOURCES DEPT  
SALEM, OREGON

● NEW WELL #4, 117' N. & 2,595' W. OF SE CORNER SECTION 9



PRIMARY IRRIGATION AREA = 83.9 ACRES

SUPPLEMENTAL IRRIGATION AREA = 126.5 ACRES

--- EXISTING 6" IRRIGATION MAIN LINE

## GROUNDWATER WATER RIGHT APPLICATION

SCALE: 1" = 1320'

APPLICATION No. \_\_\_\_\_

PERMIT No. \_\_\_\_\_

IN THE NAME OF:

ORCHARD VIEW FARMS, INC.

DATE: OCTOBER 3, 2007



EXPIRES: 06/30/08

**TENNESON ENGINEERING CORP.**  
CONSULTING ENGINEERS  
409 LINCOLN STREET  
THE DALLES, OREGON 97058  
541-296-9177 FAX 541-296-6657



**NOTE:**

"THIS MAP IS NOT INTENDED TO PROVIDE DIMENSIONS OR LOCATIONS OF PROPERTY OWNERSHIP LINES."

W.O. #11810wr

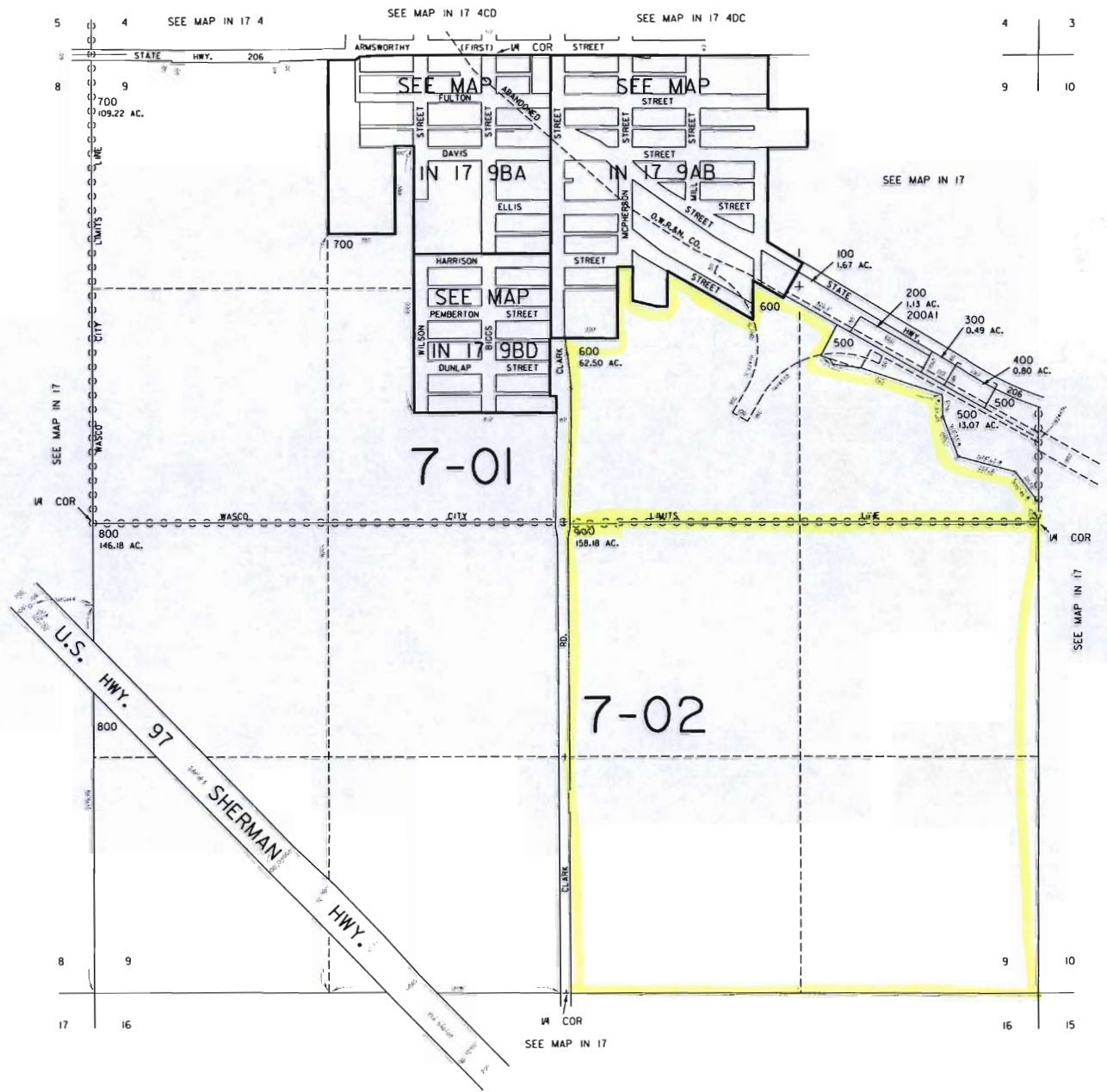
g-16972

THIS MAP WAS PREPARED FOR  
ASSESSMENT PURPOSE ONLY

SECTION 9 T.1N. R.17E. W.M.  
SHERMAN COUNTY

1" = 400'

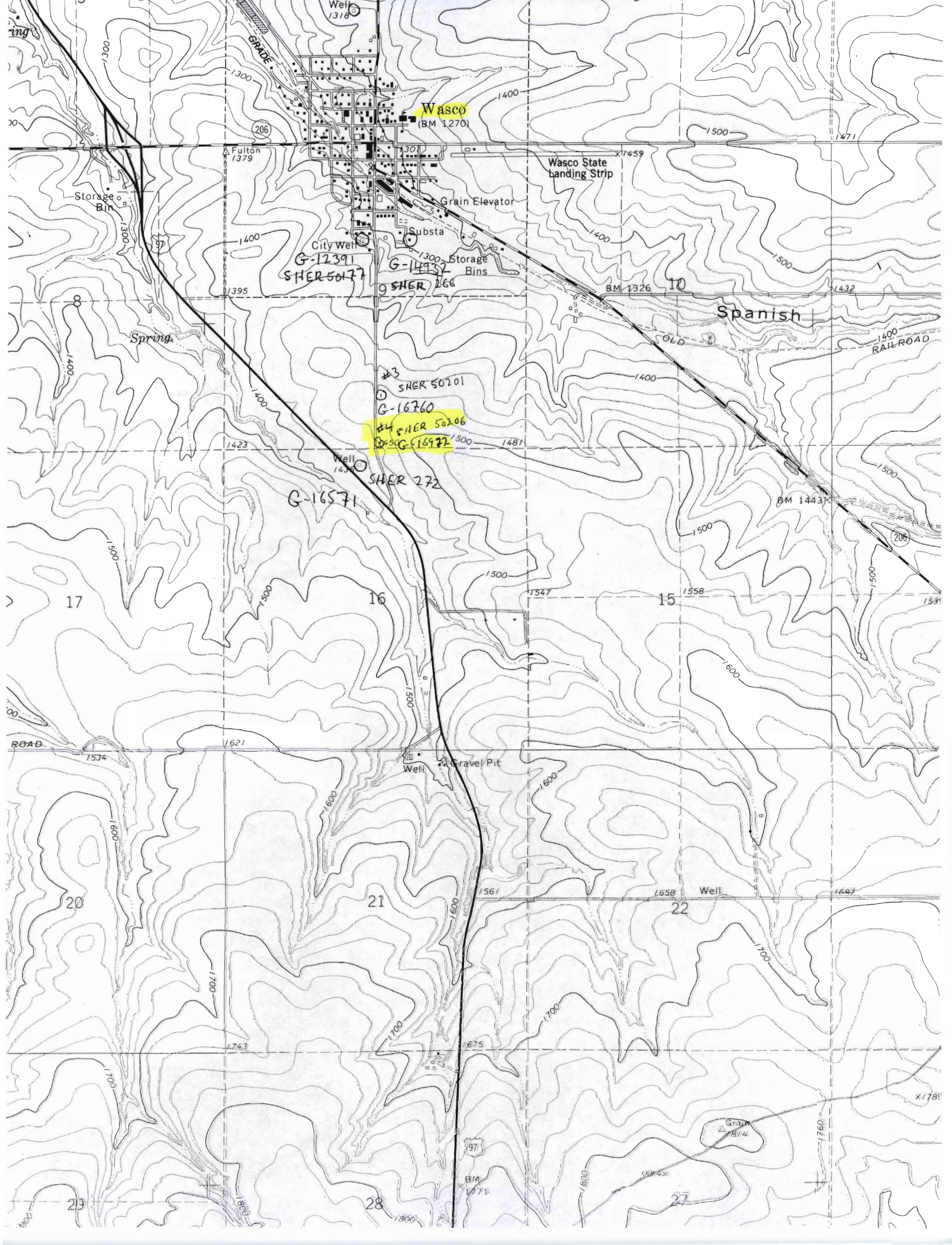
IN 17 9  
& INDEX  
WASCO



**RECEIVED**  
JAN 18 2008  
WATER RESOURCES DEPT  
SALEM, OREGON

IN 17 9  
& INDEX  
WASCO





Wasco (BM 1270)

Wasco State Landing Strip

Grain Elevator

Substa

Storage Bins

City Well

G-12391  
SHER 50177

G-14937  
SHER 166

#3  
SHER 50101

G-16760

#4  
SHER 50206

G-16977

Well  
SHER 272

G-16571

Gravel Pit

Well

Well

Grain Bin

Fulton 1379

BM 1326

BM 1443

BM 1771

1743

1675

1760

x178

Spanish

OLD

RAILROAD

Spring

1423

1481

1547

1558

1600

1500

1500

1500

1500

1534

1621

1600

1600

1607

1600

1600

1600

1600

1600

1700

1700

1700

1700

1700

1700

1700

1700

1700

1700

1800

1800

1800

1800

1800

1400

1300

1400

1500

1395

1432

1423

1481

1547

1558

1600

1500

1500

1500

1500

1534

1621

1600

1600

1607

1600

1600

1600

1600

1600

1700

1700

1700

1700

1700

1700

1700

1700

1700

1700

1800

1800

1800

1800

1800

1300

1400

1500

1471

1400

1400

1500

1423

1481

1547

1558

1600

1500

1500

1500

1500

1534

1621

1600

1600

1607

1600

1600

1600

1600

1600

1700

1700

1700

1700

1700

1700

1700

1700

1700

1700

1800

1800

1800

1800

1800

1300

1400

1500

1471

1400

1400

1500

1423

1481

1547

1558

1600

1500

1500

1500

1500

1534

1621

1600

1600

1607

1600

1600

1600

1600

1600

1700

1700

1700

1700

1700

1700

1700

1700

1700

1700

1800

1800

1800

1800

1800

1300

1400

1500

1471

1400

1400

1500

1423

1481

1547

1558

1600

1500

1500

1500

1500

1534

1621

1600

1600

1607

1600

1600

1600

1600

1600

1700

1700

1700

1700

1700

1700

1700

1700

1700

1700

1800

1800

1800

1800

1800

1300

1400

1500

1471

1400

1400

1500

1423

1481

1547

1558

1600

1500

1500

1500

1500

1534

1621

1600

1600

1607

1600

1600

1600

1600

1600

1700

1700

1700

1700

1700

1700

1700

1700

1700

1700

1800

1800

1800

1800

1800

1300

1400

1500

1471

1400

1400

1500

1423

1481

1547

1558

1600

1500

1500

1500

1500

1534

1621

1600

1600

1607

1600

1600

1600

1600

1600

1700

1700

1700

1700

1700

1700

1700

1700

1700

1700

1800

1800

1800

1800

1800

1300

1400

1500

1471

1400

1400

1500

1423

1481

1547

1558

1600