

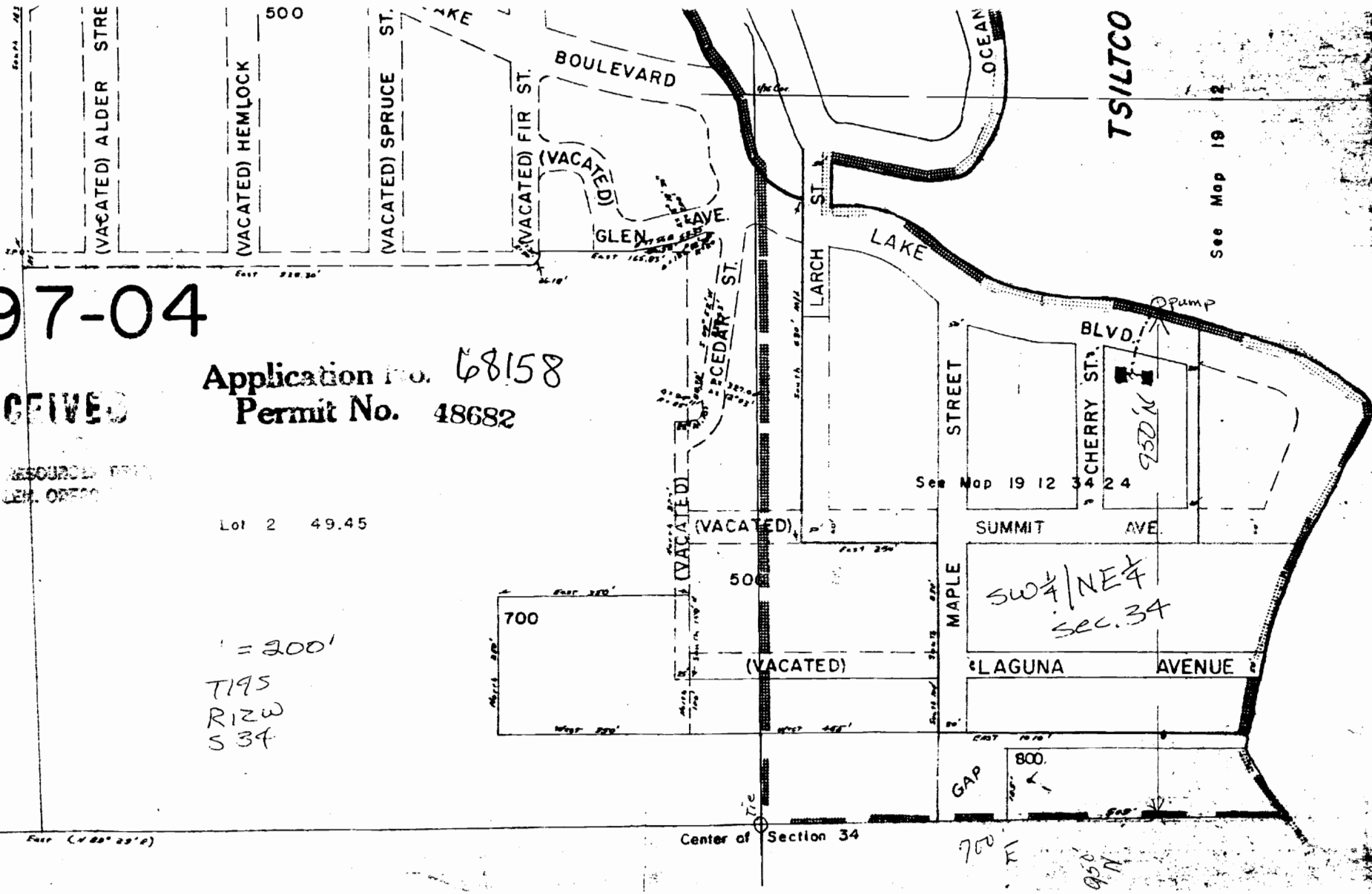
097-04

Application No. 68158
Permit No. 48682

Lot 2 49.45

= 300'
T195
R12W
S 34

RECEIVED
RESOURCE DIV.
LEA. OFFICE



See Map 19 12

See Map 19 12 34 24

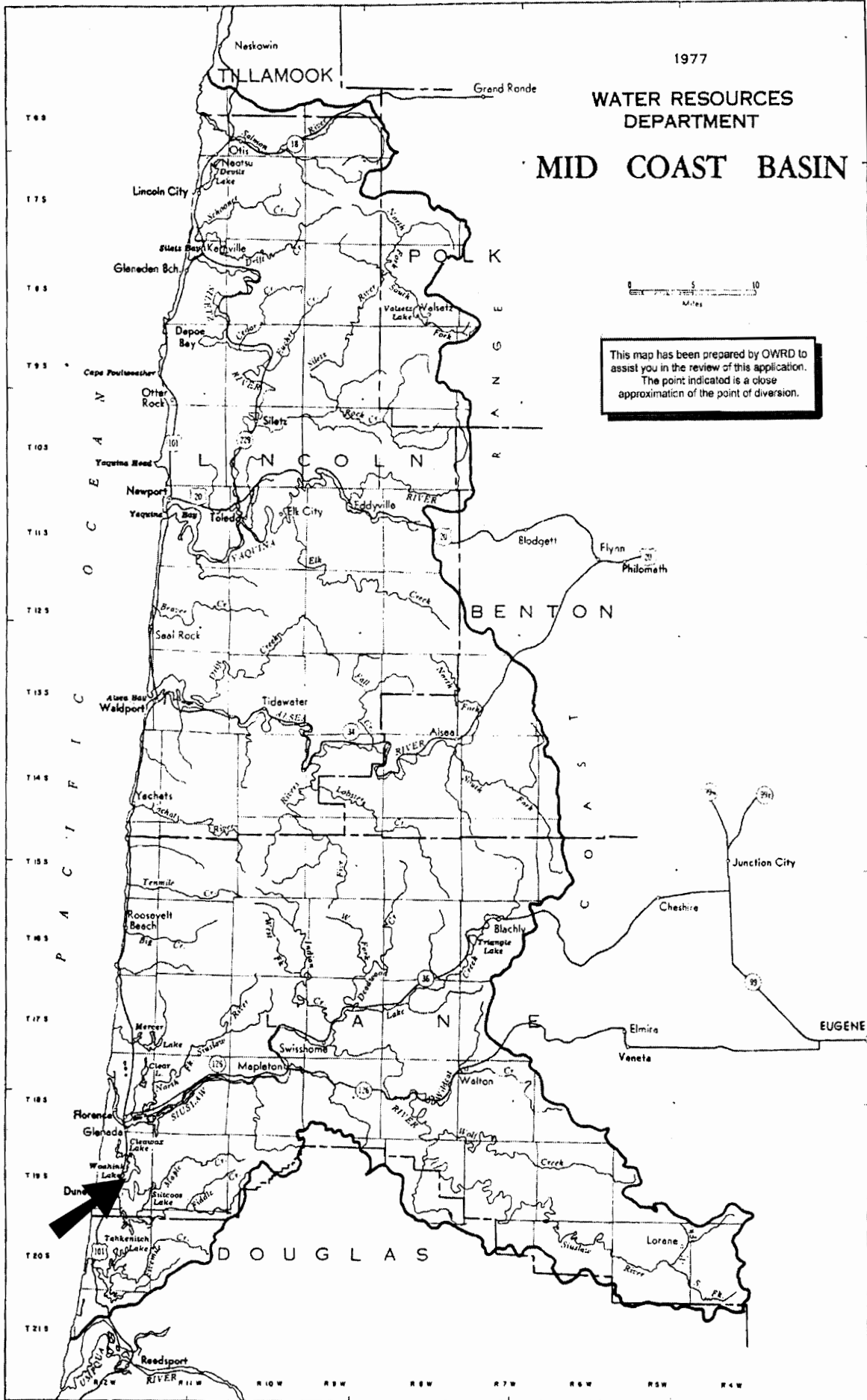
SW 1/4 / NE 1/4
SEC. 34

Center of Section 34

GAP

700 E

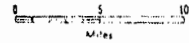
950 N



1977

WATER RESOURCES DEPARTMENT

MID COAST BASIN



This map has been prepared by OWRD to assist you in the review of this application. The point indicated is a close approximation of the point of diversion.

PACIFIC OCEAN

BENTON

LINCOLN

TILLAMOOK

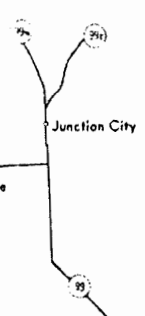
DOUGLAS

ASTORIA

EUGENE

T 0 0
T 0 5
T 0 8
T 0 9
T 1 0
T 1 1
T 1 2
T 1 3
T 1 4
T 1 5
T 1 6
T 1 7
T 1 8
T 1 9
T 2 0
T 2 1

Grand Ronde



R10W R9W R8W R7W R6W R5W R4W

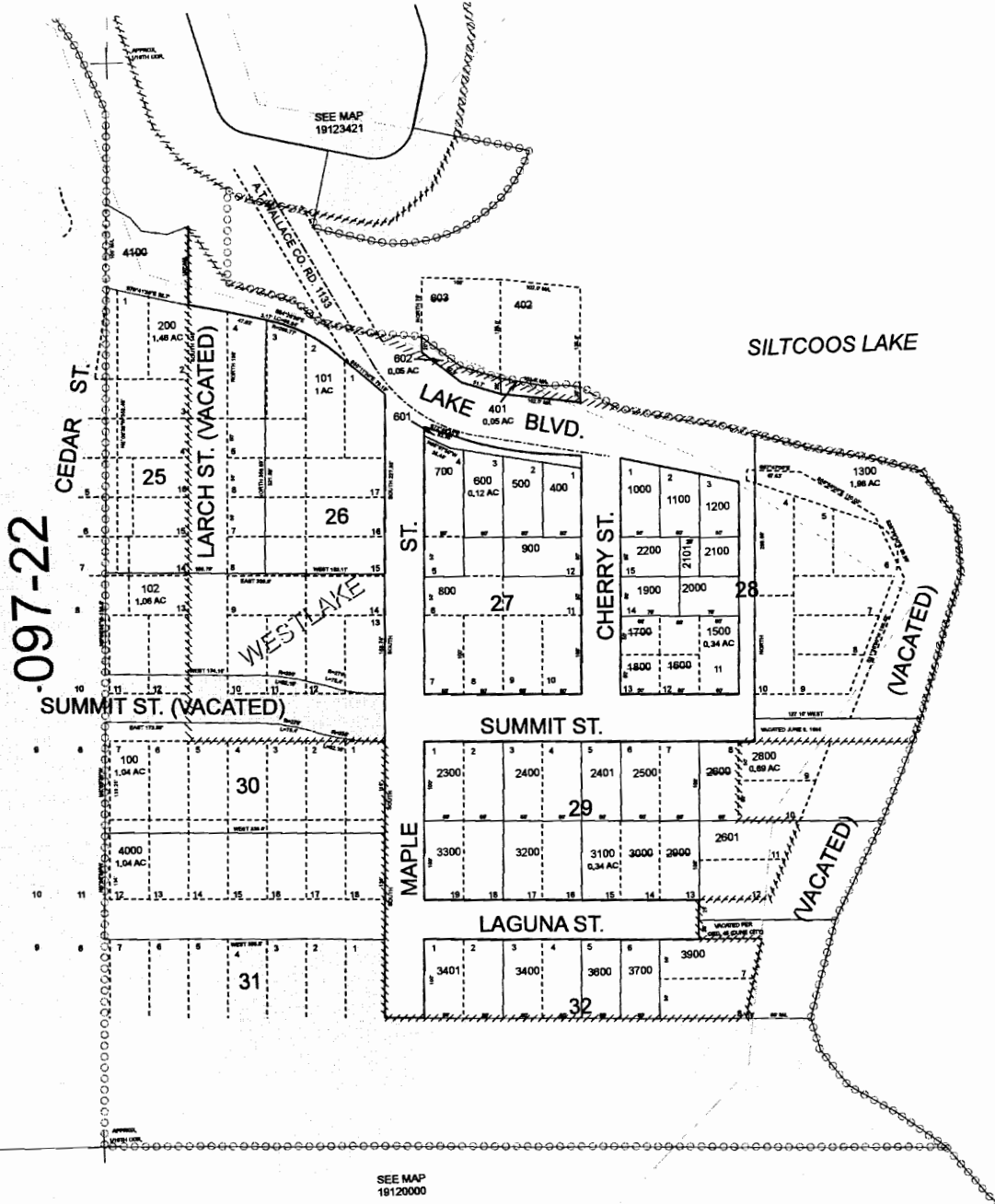
FOR ASSESSMENT AND TAXATION ONLY

S.E.1/4 N.W.1/4 SEC.34 T.19S. R.12W. W.M.
Lane County
1" = 100'

GIS DATA
1/10/2007 2:42:23 PM - kashdown

CANCELLED:

- 402
- 603
- 300
- 1400
- 3401
- 3500
- 1600
- 1700
- 1800
- 2800
- 2900
- 3000
- 4100

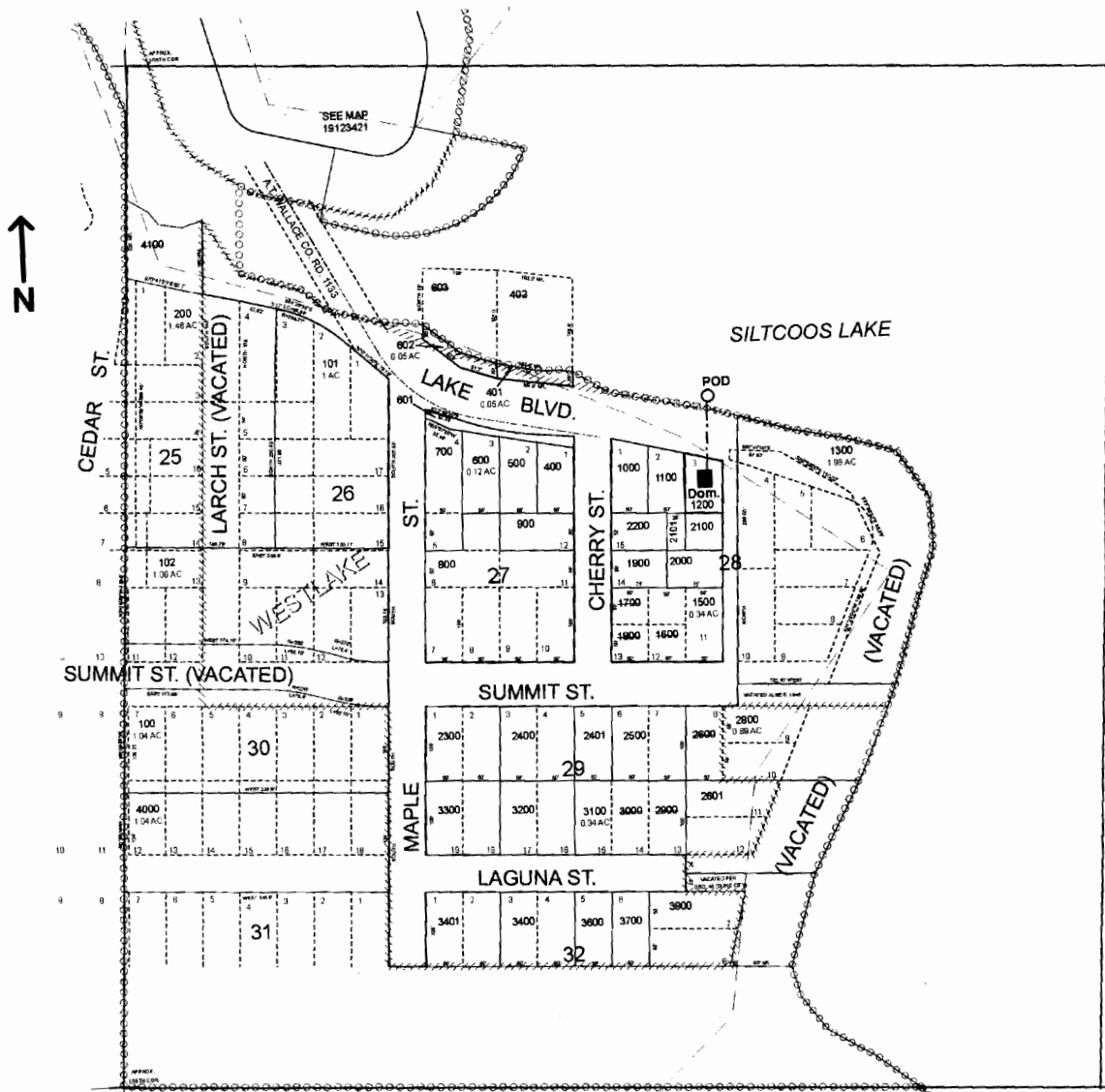


SEE MAP
19123420

SEE MAP
19120000

REVISIONS
8/15/2004 - LGAT140 - CONVERT MAP TO GIS
10/18/2004 - LGAT141 - CORRECT TO 191234200000
1/10/2007 - LGAT113 - ADD REVISION NUMBER

SW 1/4 NE 1/4 SEC.34 T.19S. R.12W. W.M.
Lane County
Scale: 1" = 250'



POD is located 445 ft. S. and 785 ft. E. from the NW corner of the SW1/4 NE 1/4

RECEIVED

APR 20 2008

WATER RESOURCES DEPT
SALEM OREGON