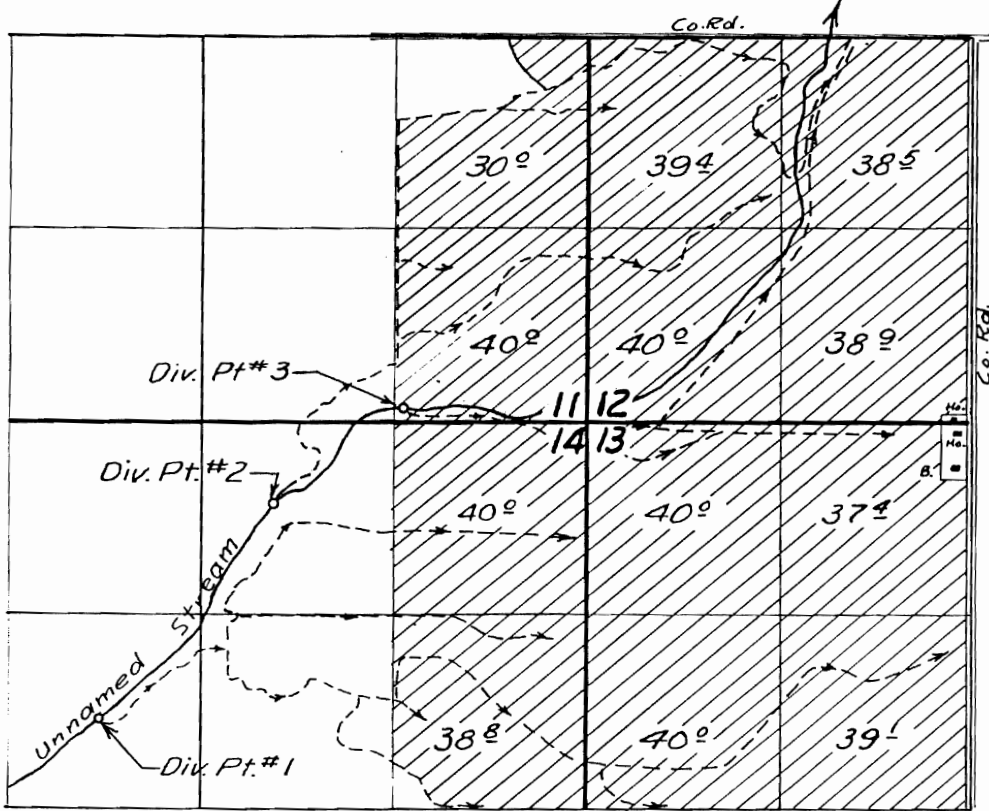


19907

T. 7 S. R. 38 E. W. M.



FINAL PROOF SURVEY
UNDER

Application No. 24466. Permit No. 19907.
IN NAME OF

Clara M. Welch, Roy Welch, Roy Welch & Emma B. Fisher

Surveyed 27 May 1956, by Tom Bish

RECEIVED

DEC 24 2007
WATER RESOURCES DEPT
SALEM, OREGON

App No G-16986

BBB-11N-43

GROUNDWATER APPLICATION MAP

DECEMBER 20, 2007

BREWSTER RANCH- BAKER COUNTY

14190 TALLEY-DOBBIN LN HAINES OR. 97833

ALMON BREWSTER OWNER

LOCATION: TOWNSHIP 7 SOUTH RANGE 38 EAST OF WILLAMETTE MERIDIAN SEC. 11&12

TAX LOT NUMBER: 2800

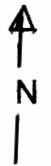
TOTAL ACRES IRRIGATED: 101

PRIMARY WATER CERTIFICATE: 1518

RECEIVED

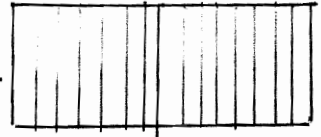
DEC 24 2007

WATER RESOURCES DEPT
SALEM, OREGON

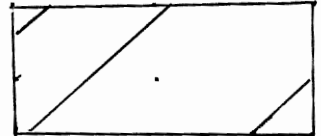


1 INCH = 440 FEET

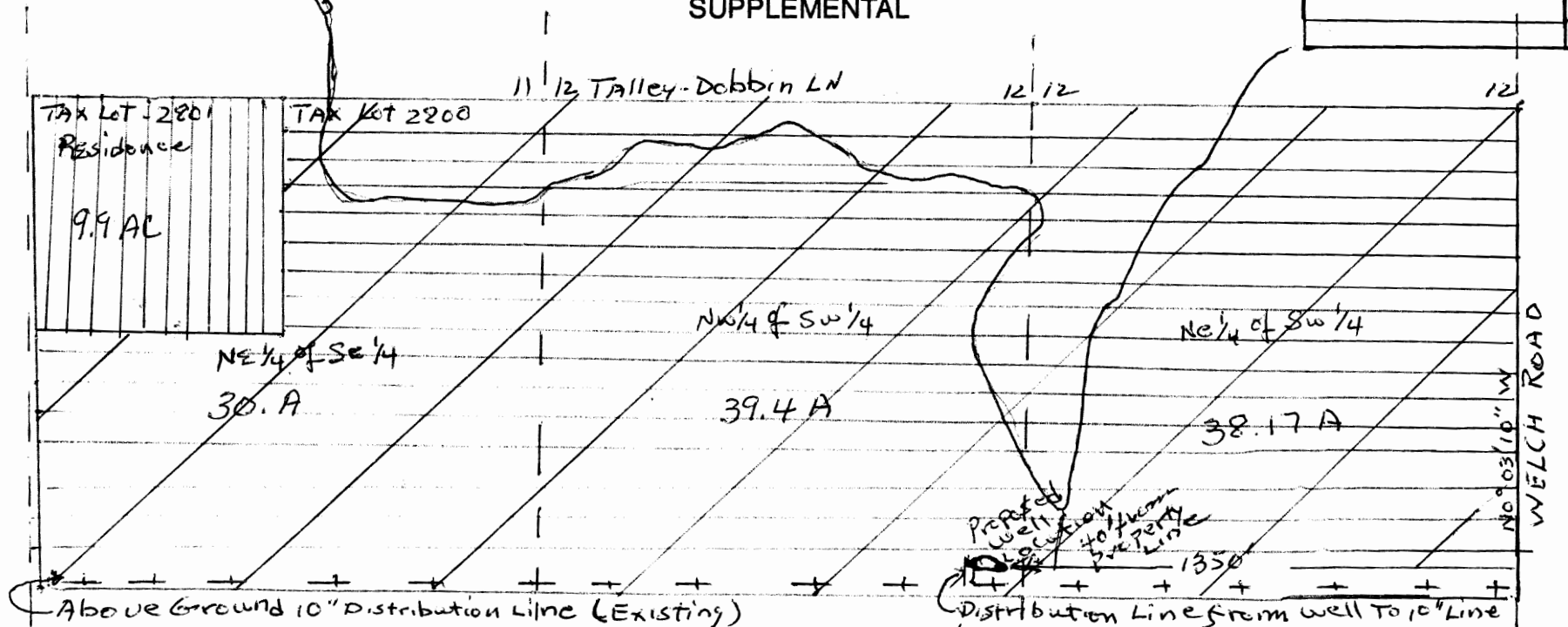
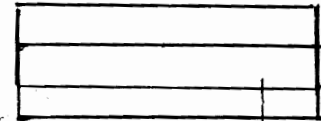
PRIMARY RIGHTS APPLIED FOR FROM WELL



PRIMARY WATER RIGHTS FROM CERTIFICATE 1518



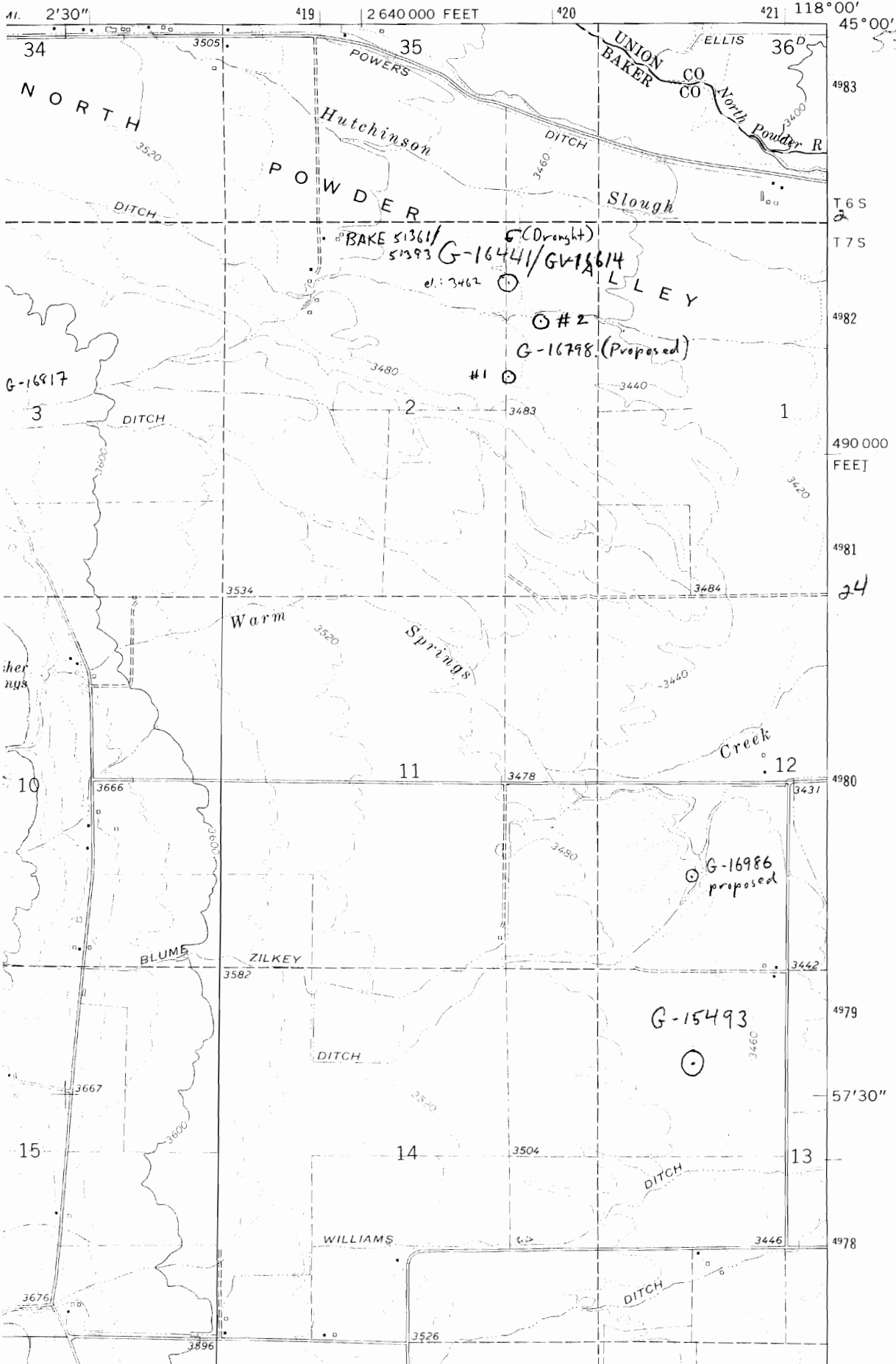
LANDS TO BE IRRIGATED BY WELL SUPPLEMENTAL



APP No G-16986

ROCK CREEK QUADRANGLE
OREGON
7.5 MINUTE SERIES (TOPOGRAPHIC)

2474 III SW
(NORTH POWDER)



Township 7 N

Range 10 E

JH

	5	4	3	2	1
					app 9753 Per 6498
8	9	10	11	12	
				24 1/2 36 1/2 40	
				40 32 1/2 40	
				40 40 40	
17	16	15	14	13	
				40 40 40	
20	21	22	23	24	

RECEIVED

DEC 24 2007

WATER RESOURCES DEPT
SALEM OREGON

*Spring and seepage
stand waste water*

6498