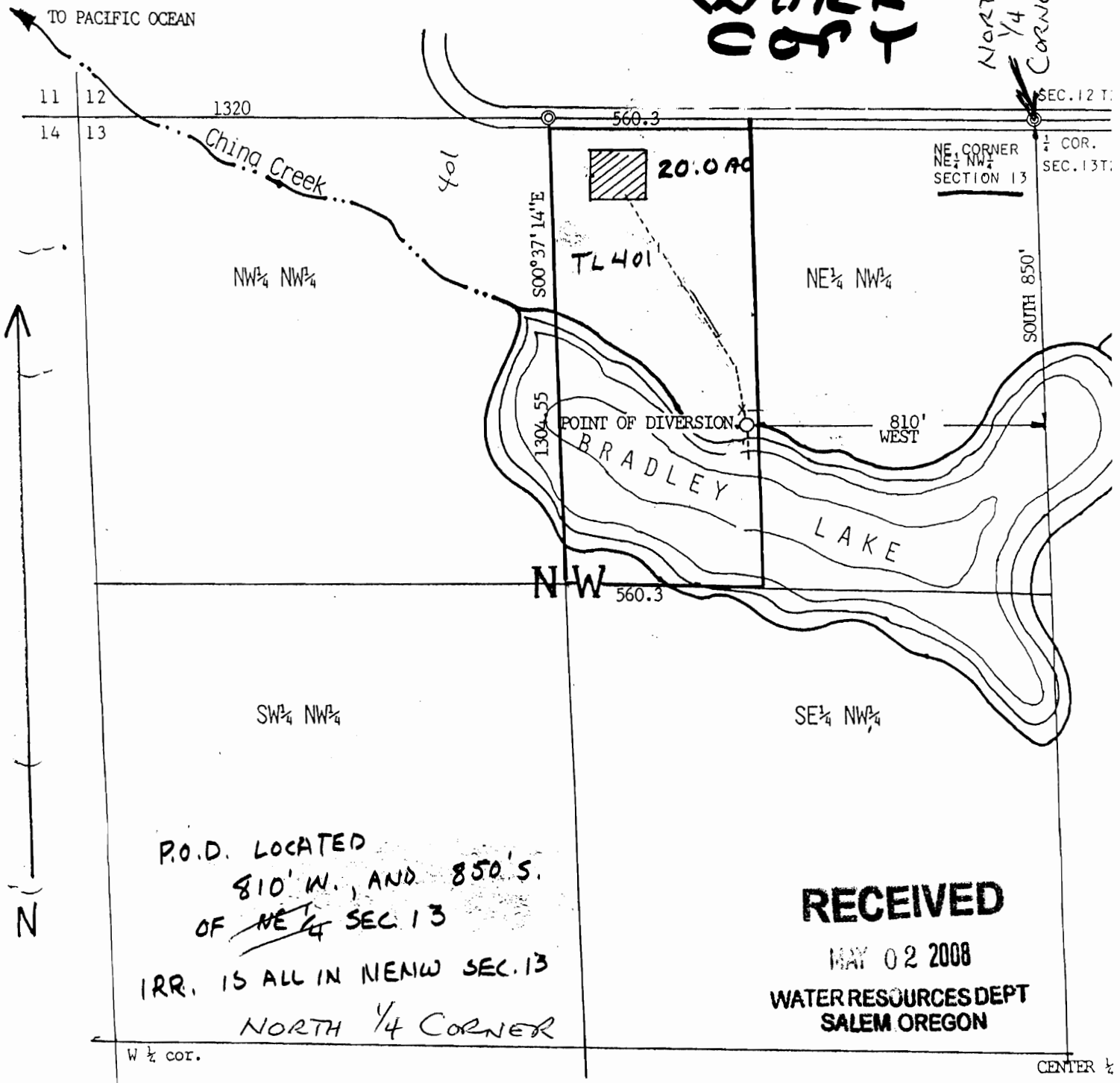


WORK COPY

NORTH 1/4 CORNER



P.O.D. LOCATED  
 810' W., AND 850' S.  
 OF ~~NE 1/4~~ SEC. 13  
 IRR. IS ALL IN NENW SEC. 13  
 NORTH 1/4 CORNER

RECEIVED

MAY 02 2008  
 WATER RESOURCES DEPT  
 SALEM OREGON

MAP FOR PERMIT TO APPROPRIATE SURFACE WATER  
 NE 1/4 NW 1/4 SECTION 13, TOWNSHIP 29 SOUTH, RANGE 15 WEST, WILLAMETTE MERIDIAN  
 COUNTY OF COOS, STATE OF OREGON

ALL ON TL401

SCALE 1" = 400'

PREPARED BY:

App No 87162

SECTION 13 T29S R15W W.M.  
COOS COUNTY

29S 15W 13  
& INDEX

CANCELLED NO.  
901 2000  
1901 1802  
100 1803  
200 1801  
1904

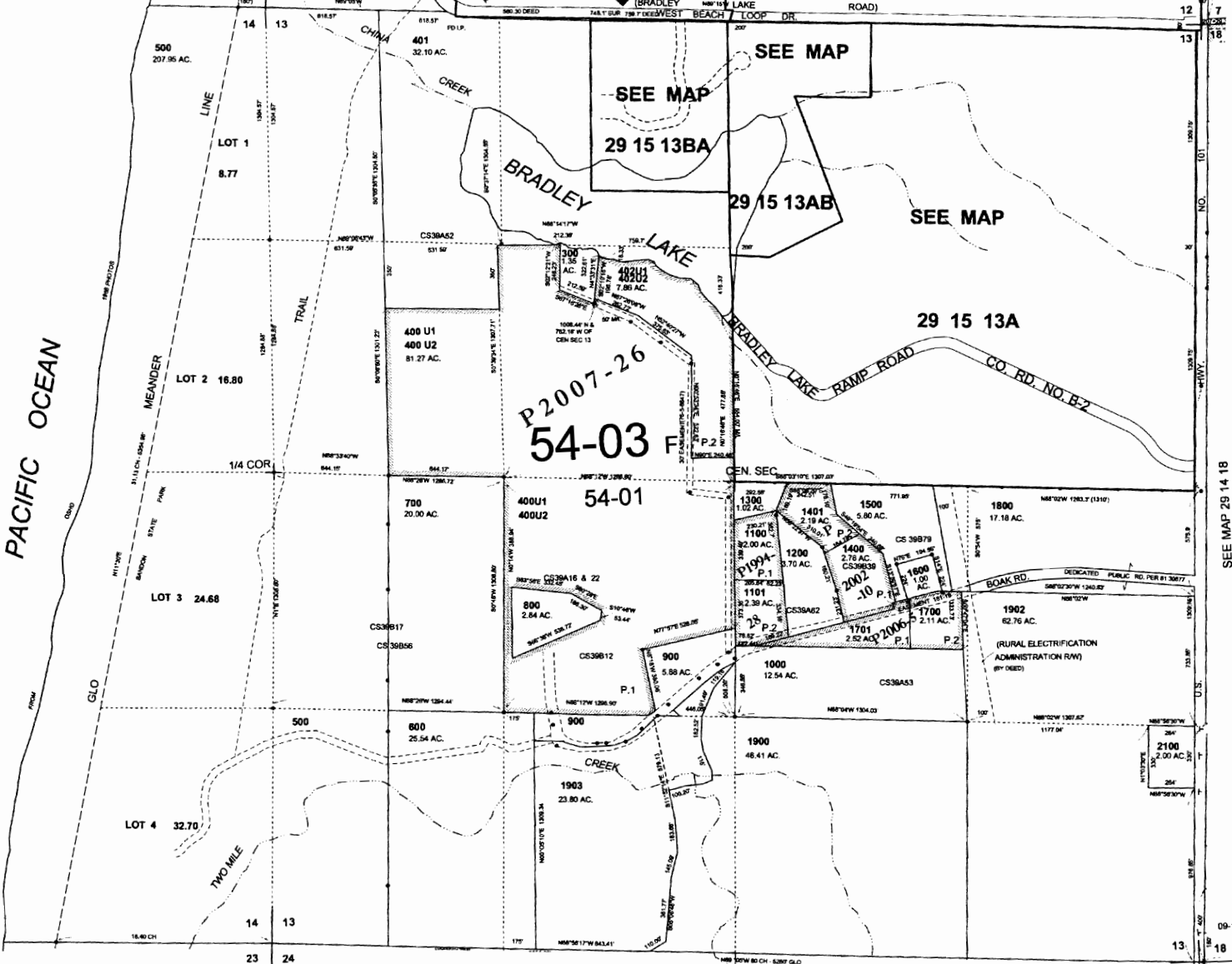
1" = 400'

THIS MAP WAS PREPARED FOR  
ASSESSMENT PURPOSE ONLY

SEE MAP 29 15 12

SEE MAP 29 15 12C

SEE MAP 29 15 12D



SEE MAP 29 15 23

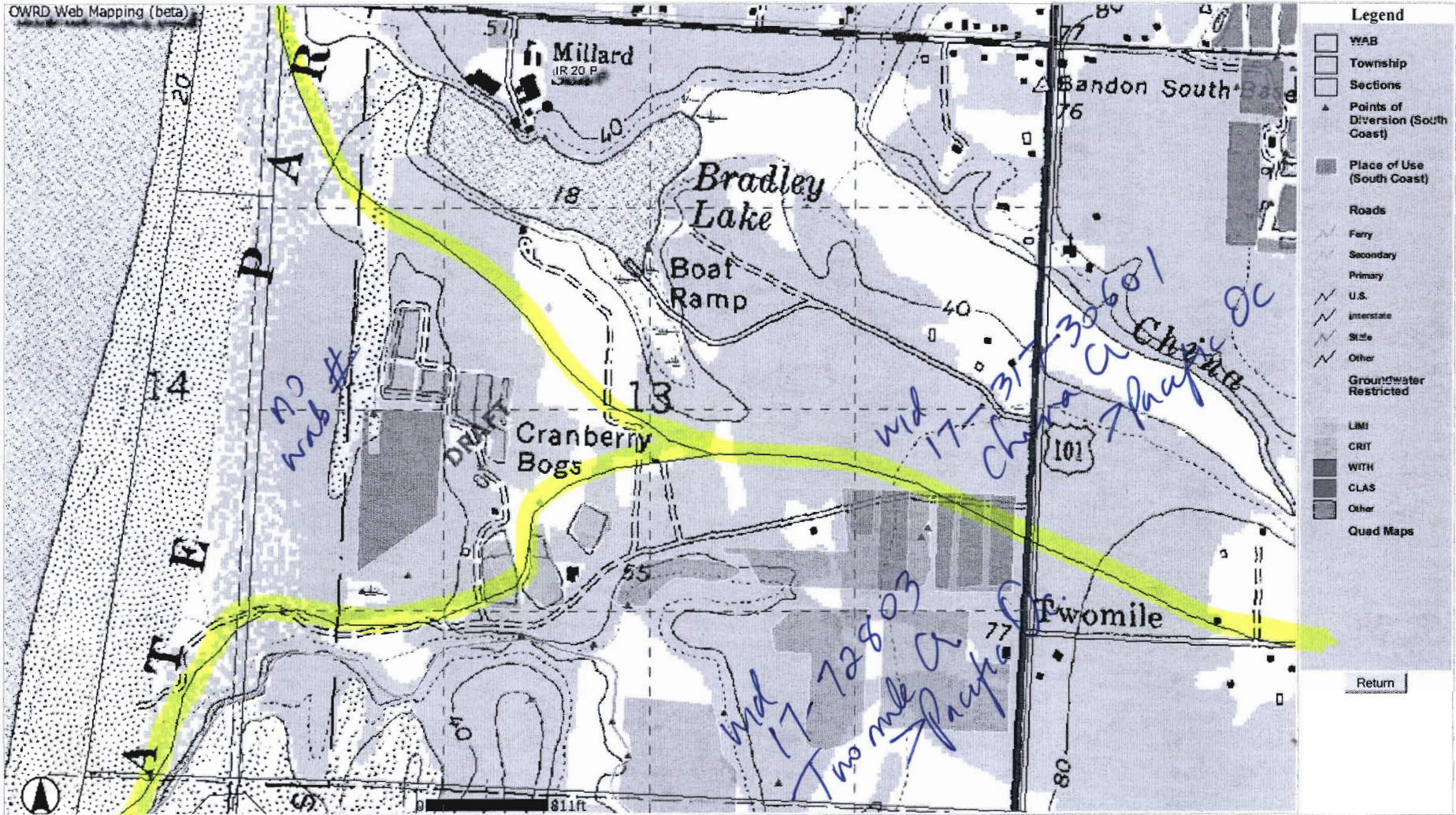
SEE MAP 15 24

SEE MAP 29 14 18

29S 15W 13  
& INDEX

09-14-2007

# Application S-87162



Legend	
	WAB
	Township
	Sections
	Points of Diversion (South Coast)
	Place of Use (South Coast)
Roads	
	Ferry
	Secondary
	Primary
	U.S.
	Interstate
	State
	Other
Groundwater Restricted	
	LMI
	CRIT
	WITH
	CLAS
	Other
Quad Maps	

[Return](#)