

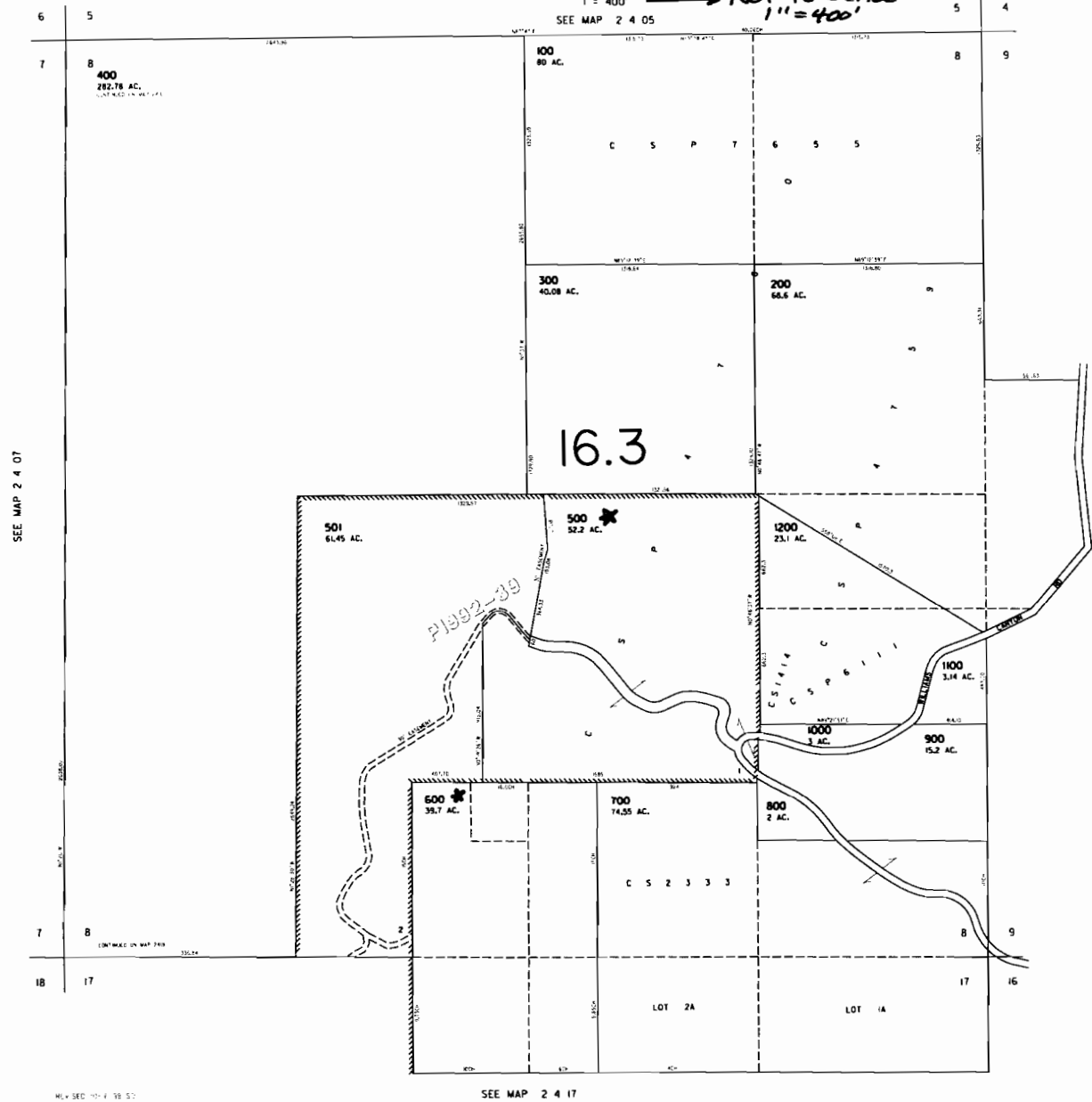
THIS MAP WAS PREPARED FOR
ASSESSMENT PURPOSE ONLY

SECTION 8 T2S R4W W.M.
YAMHILL COUNTY

2 4 08

SEE MAP 2 4 05

1" = 400' → NOT TO SCALE
1" = 400'



CANCELLED
1201

SEE MAP 2 4 07

SEE MAP 2 4 03

SEE MAP 2 4 17

SEE MAP 2 4 17

2 4 08

RECEIVED

MAY 14 2008

WATER RESOURCES DEPT
SALEM, OREGON

#8