

Carson Point

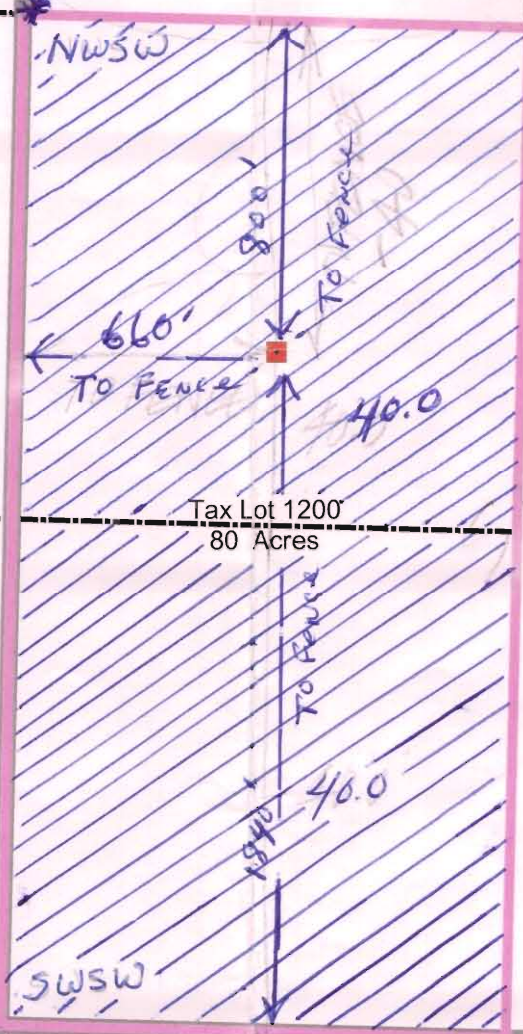
10FB

Sec 14

Sec 13

T23S R32.5E

3" BRASS CAP
WITNESS CTR
40 N
40 W



Tax Lot 1200
80 Acres

RECEIVED
OCT 31 2007
WATER RESOURCES DEPT
SALEM, OREGON

Fred & Charlene Teutsch Application Map

1 inch equals 500 feet
1 inch equals 0.09 miles

- T&R
- Sections
- Quarter Quarter
- Tax Lots
- Area to be Irrigated
- Well Locations



Note: No warranty is made by Harney County or the Bureau of Land Management as to the accuracy, reliability or completeness of these data for individual or aggregate use with other data. Original data was compiled from various sources. This information may not meet National Map Accuracy Standards. This product was developed through digital means and may be updated without notifications. Prepared by Bryce Mertz 10/2007

HARNEY COUNTY GIS
541-573-8195
www.co.harney.or.us
In cooperation with
The Bureau of Land Management



RECEIVED
NOV 14 2007
WATER RESOURCES DEPT
SALEM, OREGON

Sec 24

App No G-16961